

Paradigm Garden Oasis Crown Preset Upload Instructions

Rev 0 2016 Dec 12 dc

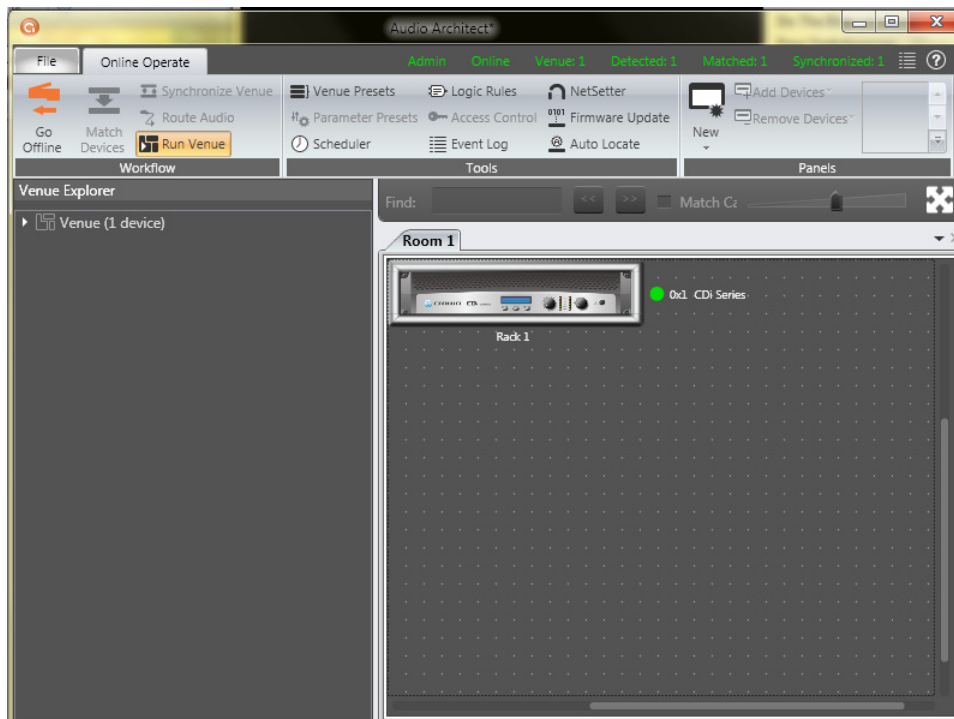
These instructions are to be used to upload a device file for Garden Oasis speakers into a Crown CDi1000.

Requirements:

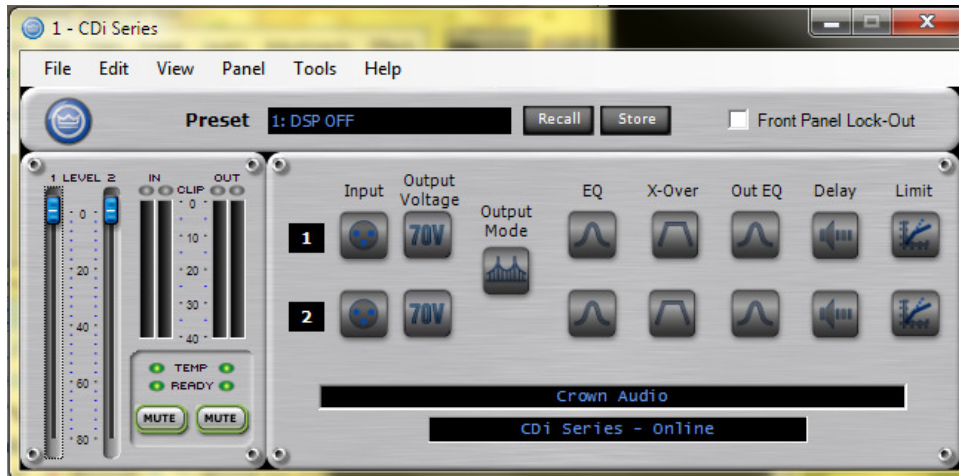
- Crown amplifier – CDi1000 is assumed, but presets may work on other CDi models as well.
- PC\laptop with Audio Architect software installed
- USB cable to connect computer to amplifier.
- Most recent approved device file software. This will be noted in the operations card\work order for Visual part number “1310000005 CROWN CR-DCI1000 AMPLIFIER” As of 2016 Dec 12, this is: “Garden Oasis CDi Presets REV_01 2016_12_12.CDi.Device”

Procedure

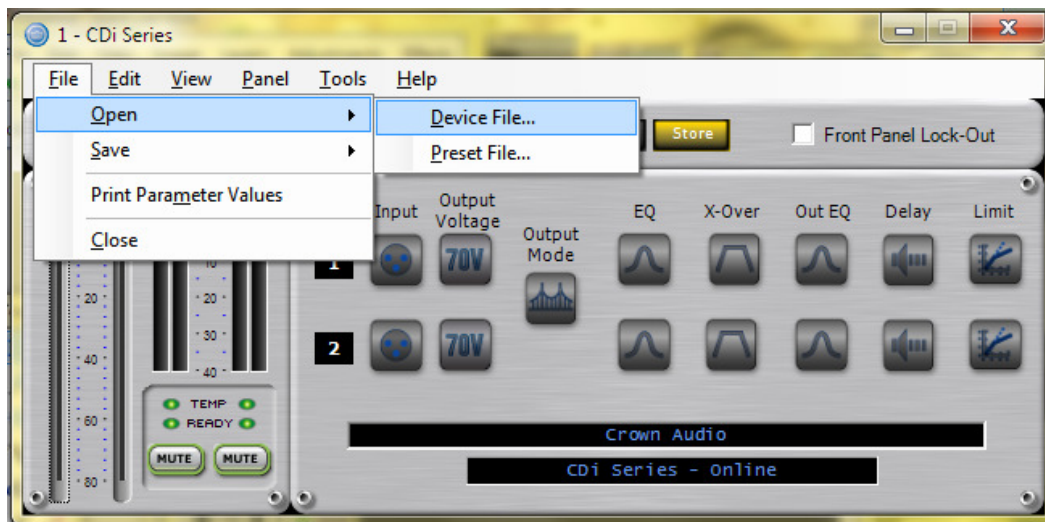
1. Run Audio Architect software
2. Connect amplifier to computer and turn on
3. Wait for software to discover amplifier (ignore\close other popup windows)



4. Double-click to open amplifier



5. Click 'File' then 'open' > 'device File'



6. Open device file.
7. Open amplifier again.
8. Disconnect USB cable.
9. Press 'Sel/Enter' button on amp.
 - a. 'preset' flashes – press button again
 - b. Press up/down buttons to get to 'DSP OFF' preset, then press 'Prev/Up' button once. Confirm that "rev__" is the same as the device file.
 - c. Scroll to 8GO4_10SW preset and press 'Sel/Enter' button.
10. Press power button to turn power off.