



**! IMPORTANT**

If you choose to perform the installation yourself, it is absolutely vital that the Stealthbox® be properly mounted to the vehicle according to these instructions. Failure to mount the enclosure properly presents two problems:

- 1) The sub-bass performance will suffer due to the movement of the enclosure caused by the force exerted by the woofer(s).
- 2) A loose enclosure presents a serious safety hazard in the event of a collision or sudden deceleration.

INSTALLATION  
DIFFICULTY:

2 OUT OF 5

ESTIMATED TIME:  
1-2 HOURS



# Stealthbox®

INSTALLATION GUIDE  
for the

**SB-POL-RZG2SPKR/M3-650i**

**SKU# 94679**

**2014 & Up Polaris RZR 4 900, 900XC, XP 1000, XP4 1000**

**Enclosure Type:** Sealed

**Driver Type:** M3-650X-S-Gm-i

**Nominal Impedance:** 4 ohms

**Continuous Power Handling:** 60 watts (RMS method)

*Thank you for choosing a JL Audio Stealthbox® for your automotive sound system. With proper installation, your new vehicle-specific enclosed subwoofer system will deliver years of listening pleasure.*

*We strongly recommend that you have your new Stealthbox® installed by your authorized JL Audio dealer. The installation professionals employed by your dealer have the necessary tools and experience to disassemble and reassemble your vehicle properly. If you prefer to perform your own installation, please read this installation guide completely before beginning the process.*

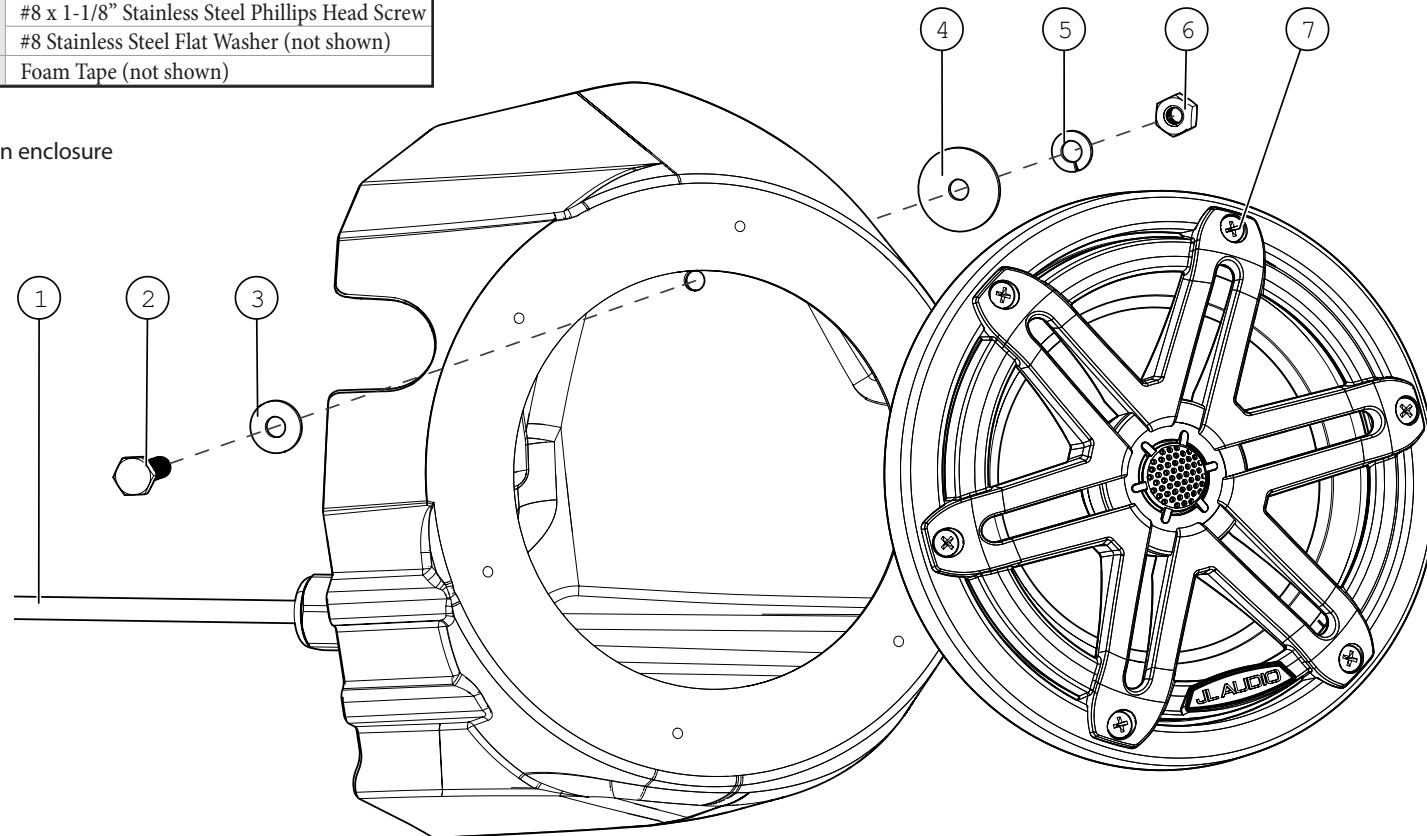
**INCLUDED HARDWARE**

(hardware pictured for one)

BOM ID	Qty	SKU	Description
1*	2	152414	Wire Harness (10')
2	2	153820	1/4 - 20 x 1" Stainless Steel Hex Cap Screw
3	2	153818	1/4" Stainless Steel Flat Washer
4	2	153817	1/4" Stainless Steel x 1" OD Flat Washer
5	2	153819	1/4" Stainless Steel Split Lock Washer
6	2	153816	1/4 - 20 Stainless Steel Hex Nut
7**	12	(1) 193559	#8 x 1-1/8" Stainless Steel Phillips Head Screw
	12		#8 Stainless Steel Flat Washer (not shown)
-	1	150249	Foam Tape (not shown)

\* Pre-installed on enclosure

\*\* Two of each pre-installed on enclosure



**Note: For optimum performance, JL Audio recommends applying the included Foam Strips (or sound damping material) to surrounding plastic panels to reduce unwanted vibrations.**

## WIRING INFORMATION

### Wiring Harness Info

Wire Size	Wire Color	Use
16 AWG	Red/Stripe	Speaker Positive (+)
	Black/Stripe	Speaker Negative (-)
20 AWG	Red	Red RGB LED Negative (-)
	Green	Green RGB LED Negative (-)
	Blue	Blue RGB LED Negative (-)
	Yellow	Main RGB LED Positive (+)

Adjustable control of RGB lighting may be achieved with the use of an RGB lighting controller (sold separately). **Note: When selecting an RGB lighting controller, make sure that the total amperage demands of all LED circuits does not exceed the output capacity of the controller.** For each M3-650X speaker, a 150 mA fuse is recommended. For optimal performance, we recommend using the JL Audio marine lighting controller (MLC-RW).

### Direct LED Wiring

Alternatively, you may hard wire individual leads or a combination of leads to achieve up to seven different LED color assortments. Refer to the table below for the wire colors used to achieve specific LED colors.

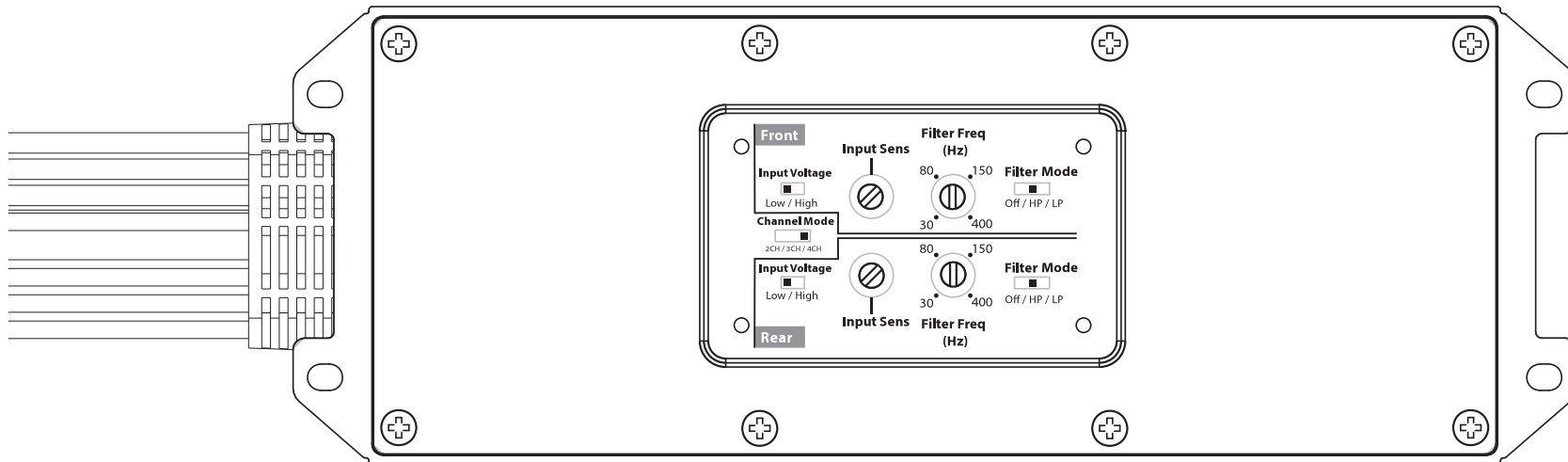
LED Color	Wire Color(s)	Connection
Red	Red	Combine selected wires from all speakers and connect to negative ground or the negative (-) battery post.
Green	Green	
Blue	Blue	
Yellow	Red and Green	
Pink	Red and Blue	
Aqua	Green and Blue	
White	Red, Green and Blue	
Combine all YELLOW (+12V) leads together (parallel) and connect to a switched +12V supply.		

### LED Wiring Considerations

- For short-circuit protection, we recommend installing a fuse (not included) at EACH speaker's YELLOW (+12V) LED power connection lead.
- We recommend activating the speakers' LEDs thru an interior lighting circuit that supplies +12V via an existing switch. If an existing switched circuit is not available, you may install a dedicated toggle/rocker style switch that will supply positive (+12V) power. Fuse this main +12V connection according to the total demands of all LED circuits.

## POWER RECOMMENDATION

JL Audio recommends high quality amplifiers such as the JL Audio MX280/4. The diagram below shows the recommended crossover settings for the MX280/4. For a detailed description of the amplifier settings, consult the owner's manual for the amplifier. If another amplifier is being used, please reference this illustration and use similar settings on that amplifier.



## CONNECTIONS

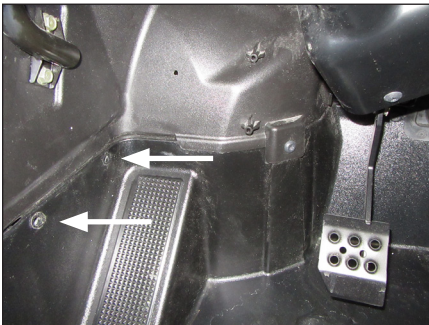
Using quality power, signal, and speaker wire is essential in ensuring the performance of your Stealthbox®. JL Audio recommends using a 4 AWG power kit such as the XD-PCS4-1B for your Stealthbox® amplifier. Other kits are available should you be using more than one amplifier. Signal wire such as the JL Audio Premium Audio Interconnect Cables should be used to provide signal for both channels of the amplifier. JL Audio recommends using 12 AWG speaker wire for subwoofers such as our XC-BCS12-25.



**STEP 1**

The following steps show the installation procedure for the driver's side only, but the procedure is the same for both sides.

Empty the driver's side of the vehicle.



**STEP 2**

Remove the two indicated factory bolts.



**STEP 3**

Cut the Template from **Page 8** of this manual.

Align the lower holes in the Template to the factory holes in the vehicle, and secure using the factory bolts removed in the previous step. The bottom of the Template should be parallel with the horizontal edge of the plastic panel, as shown.



**STEP 4**

Using a 1/8" drill bit, carefully drill through the indicated mark on the Template, through the plastic panel, to the exterior wheel well area.

Remove the factory bolts, and remove the Template.



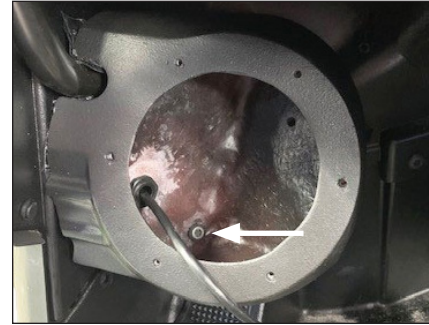
**STEP 5**

Using a 1-1/8" hole saw, enlarge the hole drilled in the previous step.



**STEP 6**

Place the driver's side enclosure on a flat surface. Remove the two #8 x 1-1/8" Stainless Steel Phillips Head Screws and #8 Stainless Steel Flat Washers.



**STEP 7**

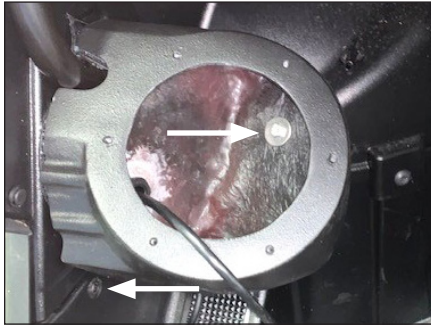
Remove the speaker and batting from the enclosure. Pass the cable exiting the rear of the enclosure through the hole in the plastic panel. Position the speaker enclosure flush against the kick panel, allowing the grommet to sit in the drilled hole.

Secure the enclosure using a factory bolt through the lower hole in the enclosure, as shown.



**STEP 8**

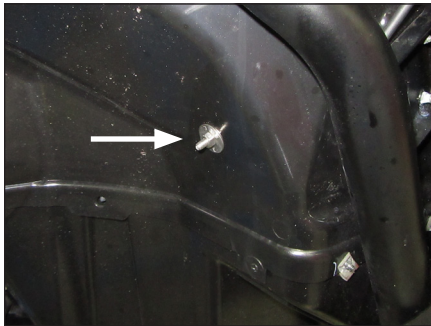
Using a 1/4" drill bit, carefully drill through the upper hole in the enclosure, through the plastic panel, to the exterior wheel well area.



**STEP 9**

Slide a 1/4" Flat Washer over a 1/4 - 20 x 1" Hex Cap Screw, and pass the assembly through the hole drilled in the previous step, as shown.

Reinstall the indicated factory bolt.



**STEP 10**

From the exterior wheel well area, slide a 1/4" x 1" OD Flat Washer, a 1/4" Split Lock Washer, and a 1/4 - 20 Hex Nut over the 1/4 - 20 x 1" Hex Cap Screw, and fully tighten.



**STEP 11**

Route the cable as necessary. Refer to **Page 3** for wiring information.



**STEP 12**

Reinstall the batting inside the enclosure, then reinstall the speaker using six #8 x 1-1/8" Stainless Steel Phillips Head Screws and #8 Stainless Steel Flat Washers.

Repeat the process for the passenger side.

Note: For optimum performance, we recommend applying the included Foam Strips (or sound damping material) to surrounding plastic panels to reduce unwanted vibrations.

**CONGRATULATIONS!**

You have completed the installation for this model! Enjoy your new Stealthbox®!



**RECOMMENDED SUBWOOFER SOLUTIONS**

A Stealthbox® subwoofer system is also available for your vehicle. Each weatherproof enclosure houses a premium JL Audio subwoofer and is designed for a perfect fit.

**SB-POL-RZG2/10TW3**  
SKU # 94620



**SB-POL-RZG2R/10TW3**  
SKU # 94631



**SB-POL-RZG3/10TW3**  
SKU # 94675

**JL AUDIO** | How we play.®

(954) 443-1100

[www.jlaudio.com](http://www.jlaudio.com)

All specifications are subject to change without notice. "JL Audio" and the JL Audio logo, "Stealthbox" and the Stealthbox logo, and "How we play" are registered trademarks of JL Audio, Inc. "Ahead of the Curve" and its respective logo are trademarks of JL Audio, Inc. Printed in USA • ©2017 JL Audio, Inc. • For more detailed information please visit us online at [www.jlaudio.com](http://www.jlaudio.com).

JLA-SKU# 011545 • ver. 11.07.2019 • 10369 NORTH COMMERCE PARKWAY • MIRAMAR, FLORIDA • 33025 • USA

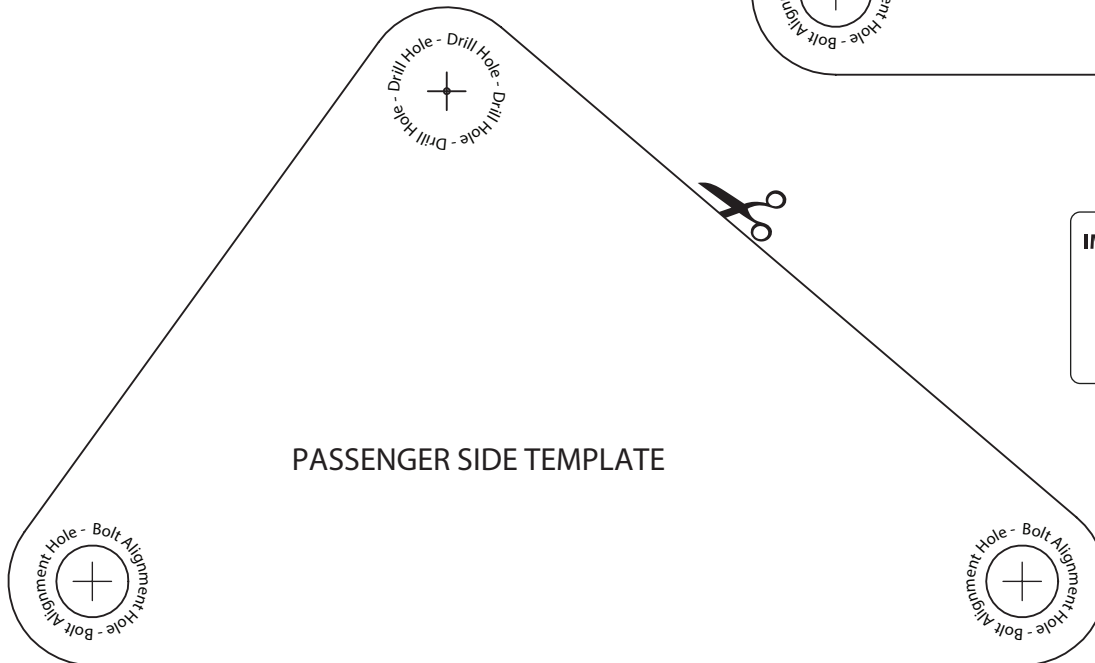
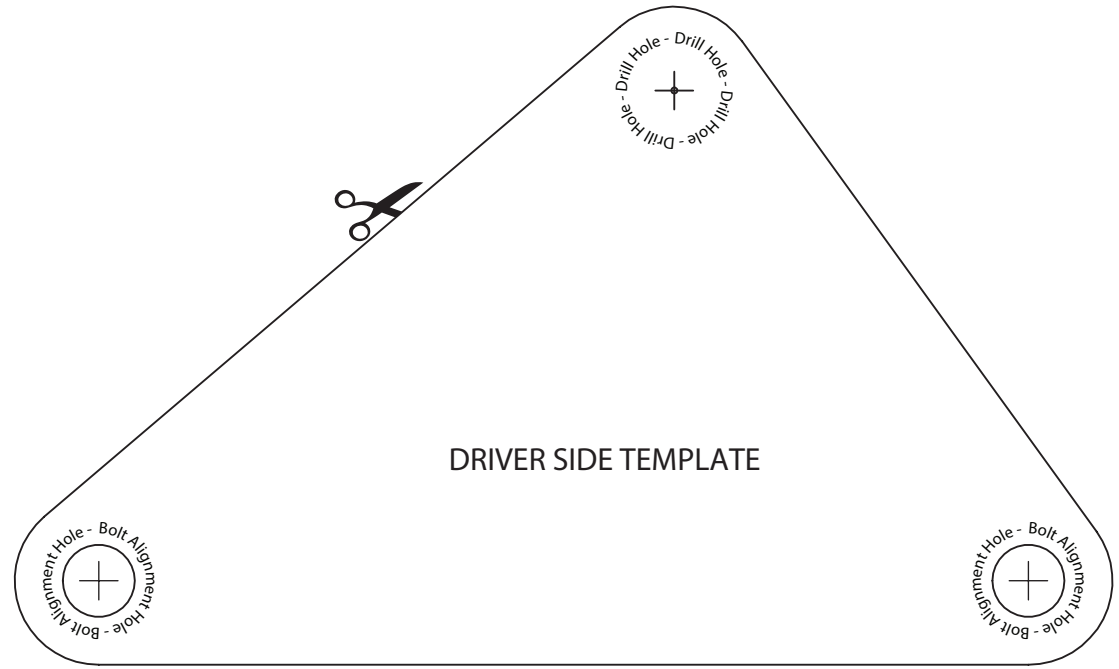


\*011545\*

This page is intentionally left blank.

## TEMPLATES

Carefully cut out the templates along the indicated lines.



**IMPORTANT:** This file must be printed actual size (100%). Printer output options such as "Fit to Page" and "Shrink Oversized Pages" will distort size and affect accuracy.