



## Stealthbox®

INSTALLATION GUIDE  
for the

### **SB-POL-RZG3/10TW3**

**SKU# 94675**

**2019 & Up Polaris RZR XP 1000, RZR XP 4 1000,  
RZR 900 XC, & RZR 4 900**

**Enclosure Type:** Sealed

**Driver Type:** 10TW3-D4

**Nominal Impedance:** 2 ohms

**Continuous Power Handling:** 400 watts (RMS method)

#### **! IMPORTANT**

If you choose to perform the installation yourself, it is absolutely vital that the Stealthbox® be properly mounted to the vehicle according to these instructions. Failure to mount the enclosure properly presents two problems:

- 1) The sub-bass performance will suffer due to the movement of the enclosure caused by the force exerted by the woofer(s).
- 2) A loose enclosure presents a serious safety hazard in the event of a collision or sudden deceleration.

**INSTALLATION  
DIFFICULTY:**

**2** OUT OF 5

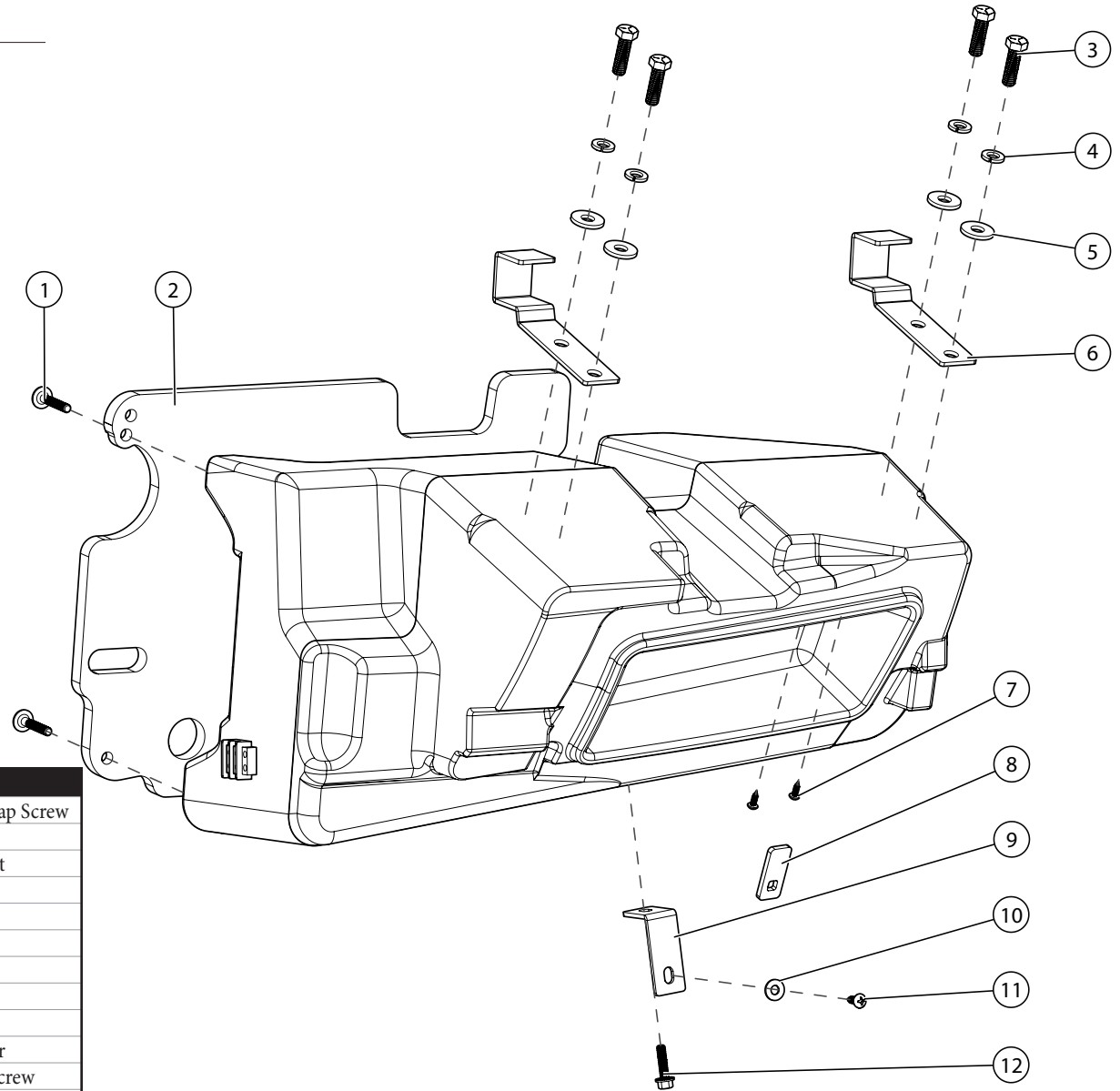
**ESTIMATED TIME:  
2 HOURS**



*Thank you for choosing a JL Audio Stealthbox® for your automotive sound system. With proper installation, your new vehicle-specific enclosed subwoofer system will deliver years of listening pleasure.*

*We strongly recommend that you have your new Stealthbox® installed by your authorized JL Audio dealer. The installation professionals employed by your dealer have the necessary tools and experience to disassemble and reassemble your vehicle properly. If you prefer to perform your own installation, please read this installation guide completely before beginning the process.*

**INCLUDED HARDWARE**



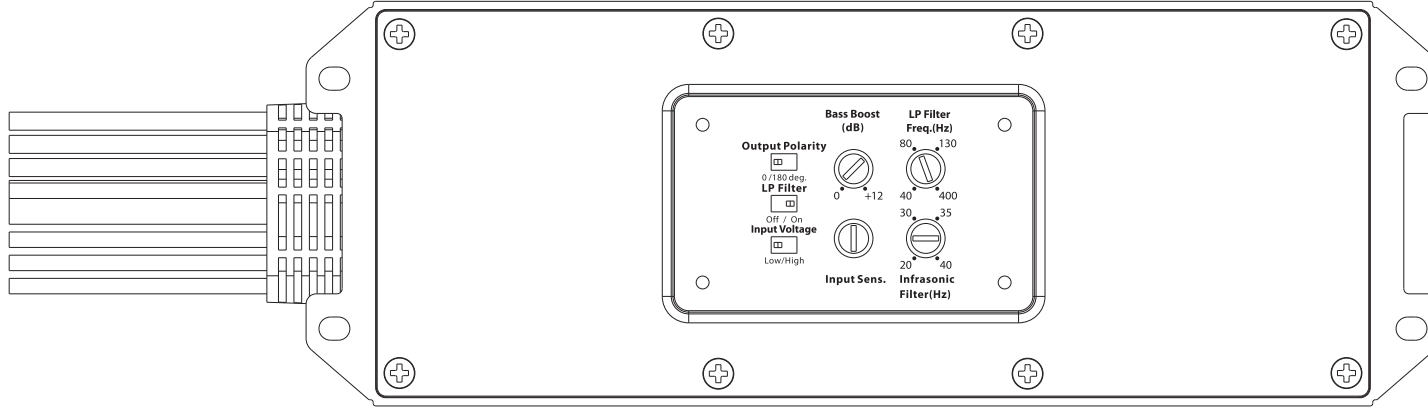
BOM ID	Qty	SKU	Description
1*	5	153728	1-4 - 20 x 1-1/2" Stainless Steel Low Profile Cap Screw
2*	1	150867	Black Starboard Baffle
3	4	153686	3/8 - 16 x 1-1/2" Stainless Steel Hex Head Bolt
4	4	151745	3/8" Stainless Steel Split Lock Washer
5	4	153732	3/8" Stainless Steel Flat Washer
6	2	154047	Top Bracket
7	2	153735	#8 x 1/2" Stainless Steel Pan Head Screw
8	1	153707	Glove Box Latch
9	1	153676	Bottom Bracket
10	1	153734	1/4" Stainless Steel 5/8" Diameter Flat Washer
11	1	153733	#12 x 3/4" Stainless Steel Phillips Pan Head Screw
12	1	153729	1/4 - 20 x 1" Stainless Steel Serrated Flange Head Bolt
-	1	150249	Foam Strips

\* Pre-installed on enclosure

**Note: For optimum performance, JL Audio recommends applying the included Foam Strips (or sound damping material) to surrounding plastic panels to reduce unwanted vibrations.**

## POWER RECOMMENDATION

JL Audio recommends high quality amplifiers such as the JL Audio MX300/1. The diagram below shows the recommended crossover settings for the MX300/1. For a detailed description of the amplifier settings, consult the owner's manual for the amplifier. If another amplifier is being used, please reference this illustration and use similar settings on that amplifier.



## CONNECTIONS

Using quality power, signal, and speaker wire is essential in ensuring the performance of your Stealthbox®. JL Audio recommends using a 4 AWG power kit such as the XD-PCS4-1B for your Stealthbox® amplifier. Other kits are available should you be using more than one amplifier. Signal wire such as the JL Audio Premium Audio Interconnect Cables should be used to provide signal for both channels of the amplifier. JL Audio recommends using 12AWG speaker wire for subwoofers such as our XC-BCS12-25.



**STEP 1**

Empty the front of the vehicle.



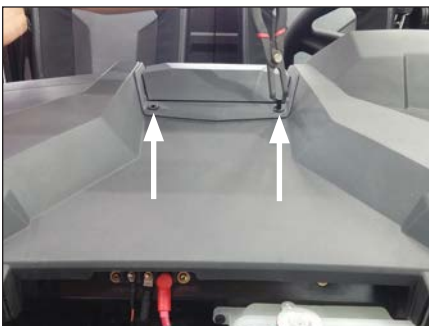
**STEP 2**

Turn the two indicated clips on the front cover to release the cover.



**STEP 3**

Remove the front cover from the vehicle.



**STEP 4**

Remove the two indicated push clips from the center dash cover panel, then remove the panel from the vehicle.



**STEP 5**

Remove the two indicated Torx screws from the passenger side of the upper dash panel.

Repeat the process for the opposite side.



**STEP 6**

Carefully remove the upper dash panel by lifting the panel up and toward the rear of the vehicle.



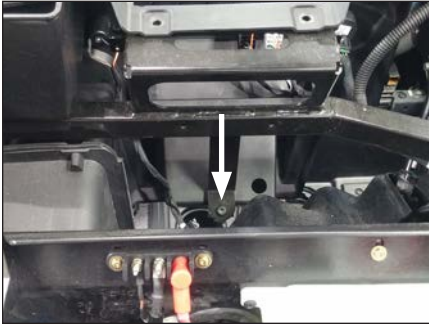
**STEP 7**

Pictured is the vehicle with the upper dash panel removed.



**STEP 8**

From under the dash, remove the indicated dash light from the bottom of the center dash pocket bracket.



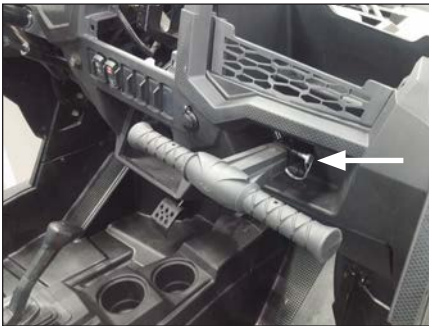
**STEP 9**

Through the top of the dash opening, remove the indicated Torx screw from the center dash pocket bracket.



**STEP 10**

Carefully remove the center dash pocket from the dash panel by pulling straight out toward the rear of the vehicle.



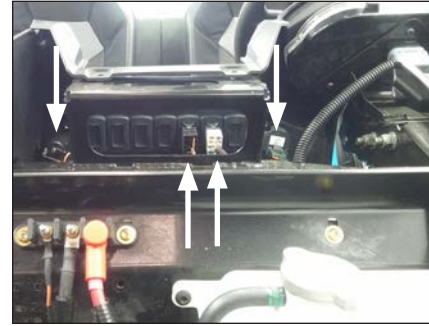
**STEP 11**

Remove the retainer clip and pin from the passenger handle, and remove the handle from the vehicle.



**STEP 12**

Carefully unclip and remove the glove compartment door.



**STEP 13**

Remove the power socket fuse.

Disconnect the power socket and indicated plugs from behind the dash.



**STEP 14**

Carefully unclip and remove the dash from the vehicle.



**STEP 15**

Remove the two indicated push clips from the passenger dash pocket, and remove the pocket from the vehicle.



**STEP 16**

Remove the two indicated bolts from the glove compartment, and remove the compartment from the vehicle.





**STEP 17**

Locate the bolt securing the center dash pocket bracket to the upper crossmember.



**STEP 18**

Remove the bolt from the center dash pocket bracket, and remove the bracket from the vehicle.



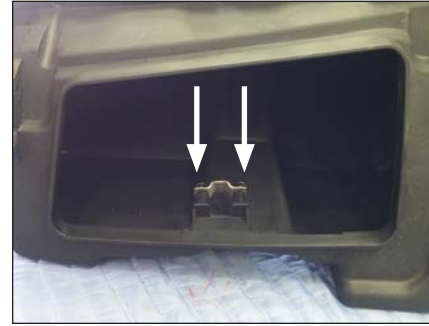
**STEP 19**

Remove the factory bolt holding the latch bracket to the back of the glove compartment door, and remove the bracket.



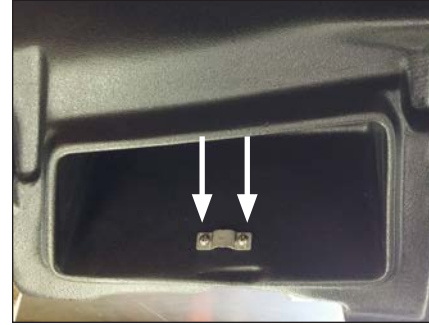
**STEP 20**

Secure the replacement Glove Box Latch bracket to the back of the glove compartment door as shown using the factory bolt removed in the previous step.



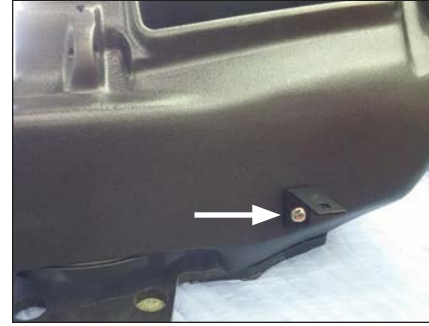
**STEP 21**

Remove the two screws holding the glove compartment door latch to the glove compartment, and remove the latch. The screws will not be reused.



**STEP 22**

Place the Stealthbox® on a flat surface, and secure the glove compartment door latch to the holes in the enclosure using a pair of #8 x 1/2" Pan Head Screws.



**STEP 23**

Thread a 1/4 - 20 x 1" Serrated Flange Bolt through the hole in the short side of the Bottom Bracket, into the threaded insert on the bottom of the enclosure, and hand tighten.



**STEP 24**

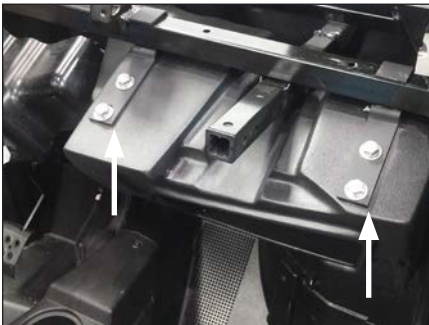
Place the Stealthbox® into position in the vehicle with the Bottom Bracket facing down.

With the enclosure firmly seated against the firewall, secure the Bottom Bracket to the factory post in the vehicle using a #12 x 3/4" Phillips Pan Head Screw and 1/4" Flat washer.



**STEP 25**

Position the two Top Brackets over the upper crossmember, as shown.



**STEP 26**

Push the enclosure up into position, aligning the slots in the Top Brackets with the threaded inserts in the top of the enclosure.

Slide a 3/8" Split Lock Washer and a 3/8" Flat Washer over each of four 3/8 - 16 x 1-1/2" Hex Head Bolt. Pass an assembly through each of the slots in the Top Brackets, into the threaded inserts in the enclosure, and fully tighten while applying forward pressure on the enclosure.



**STEP 27**

Reinstall the center dash pocket bracket onto the upper crossmember. Be sure the bracket doesn't contact the enclosure.



**STEP 28**

Reinstall the passenger dash pocket and two push clips.



**STEP 29**

Connect the power socket and plugs behind the dash, and reinstall the power socket fuse.



**STEP 30**

Reinstall the dash, then install the glove compartment door onto the Stealthbox®.



**STEP 31**

Reinstall the passenger handle, pin, and retainer clip.



**STEP 32**

Reinstall the center dash pocket, then reinstall the Torx screw removed in **Step 9**.





**STEP 33**

Reinstall the dash light onto the bottom of the center dash pocket bracket.



**STEP 34**

Reinstall the upper dash panel and four Torx screws.



**STEP 35**

Reinstall the center dash cover panel and two push clips.



**STEP 36**

Reinstall the the front cover.

Note: For optimum performance, we recommend applying the included Foam Strips (or sound damping material) to surrounding plastic panels to reduce unwanted vibrations.

**CONGRATULATIONS!**

You have completed the installation for this model! Enjoy your new Stealthbox®!



**MID/HIGH FREQUENCY DRIVER FITMENT**

VeX™ Enclosed Speaker Systems are ideal for powersports and off-road vehicle applications. Each weatherproof pod can be mounted to a roll cage precisely aimed for optimum sound. Mounting fixtures are available to fit a variety of roll cage diameters.



**JL AUDIO** | How we play.®    

(954) 443-1100

[www.jlaudio.com](http://www.jlaudio.com)

All specifications are subject to change without notice. "JL Audio" and "How we play" are registered trademarks of JL Audio, Inc. "Ahead of the Curve" and its respective logo are trademarks of JL Audio, Inc.  
Printed in USA • ©2019 JL Audio, Inc. • For more detailed information please visit us online at [www.jlaudio.com](http://www.jlaudio.com).

JLA-SKU# 011535 • ver. 09.05.2019 • 10369 NORTH COMMERCE PARKWAY • MIRAMAR, FLORIDA • 33025 • USA



\*011535\*