



Ahead of the Curve®



Stealthbox®

INSTALLATION GUIDE
for the

SBA-POL-RZG2-DK-MM50

SKU# 99815

2014-Up Polaris RZR

Dash Kit for MediaMaster® MM50

SBA-POL-RZG2-DK-MM50 INSTR_SKU# 011541

! IMPORTANT

If you choose to perform the installation yourself, it is absolutely vital that the Stealthbox® be properly mounted to the vehicle according to these instructions. Failure to mount the enclosure properly presents two problems:

- 1) The sub-bass performance will suffer due to the movement of the enclosure caused by the force exerted by the woofer(s).
- 2) A loose enclosure presents a serious safety hazard in the event of a collision or sudden deceleration.

INSTALLATION
DIFFICULTY:

1 OUT OF **5**

ESTIMATED TIME:
1 HOUR

JL AUDIO
~ STEALTHBOX ~
SBA
~ Quality & Design ~
ACCESSORIES

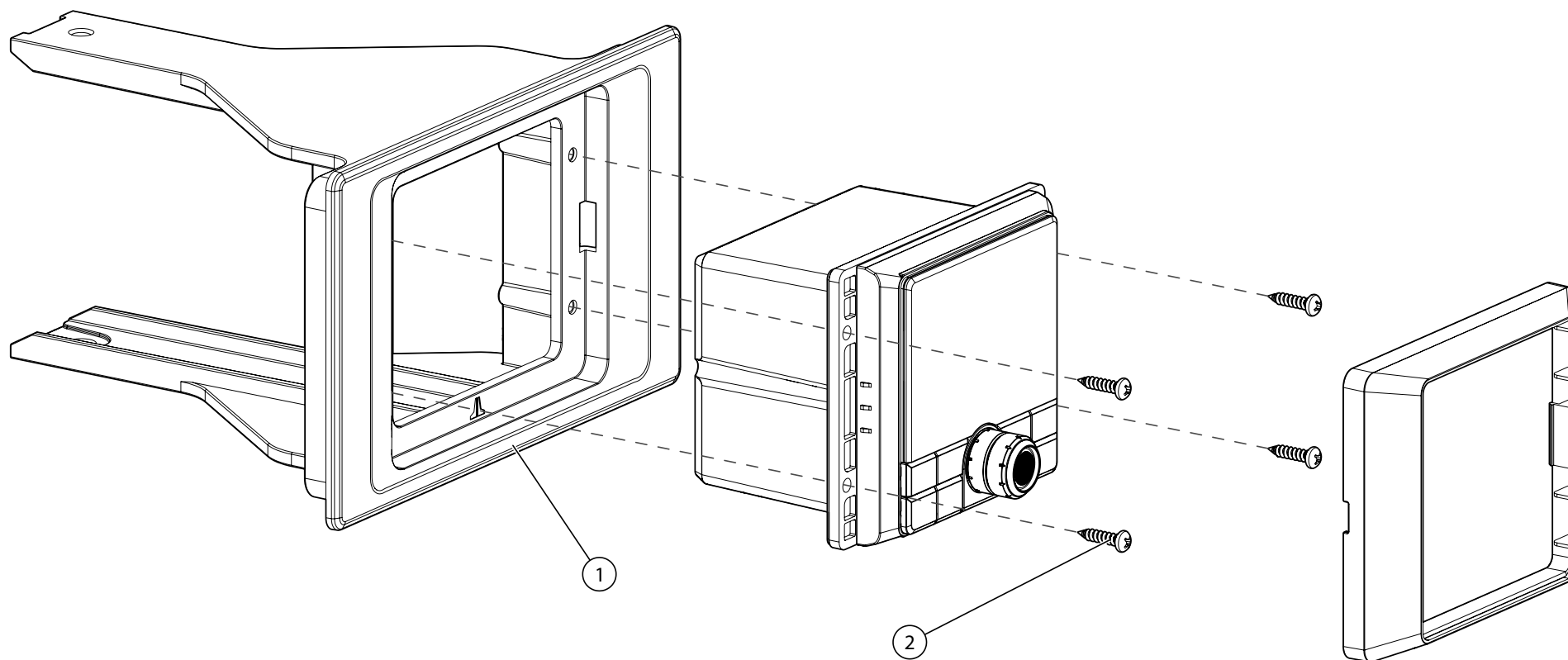
Thank you for choosing a JL Audio Stealthbox® for your automotive sound system. With proper installation, your new vehicle-specific enclosed subwoofer system will deliver years of listening pleasure.

We strongly recommend that you have your new Stealthbox® installed by your authorized JL Audio dealer. The installation professionals employed by your dealer have the necessary tools and experience to disassemble and reassemble your vehicle properly. If you prefer to perform your own installation, please read this installation guide completely before beginning the process.

Continued on Next Page

INCLUDED HARDWARE

BOM ID	Qty	Description
1	1	Dash Kit
2	4	#8 x 3/4" Stainless Steel Phillips Pan Head Screw





STEP 1

NOTE: This manual illustrates the installation of the Dash Kit in a 2014-2018 model vehicle. The installation procedure is the same for 2019-Up models.

Turn the front cover latches and unclip the cover.



STEP 2

Remove the front cover from the vehicle.

Remove the indicated Torx bolts from front of the upper dash panel.



STEP 3

Carefully unclip the upper dash panel by pulling toward the rear of the vehicle.



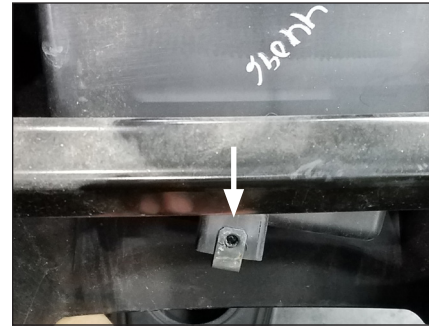
STEP 4

Remove the indicated Torx bolt from behind the lower dash panel.



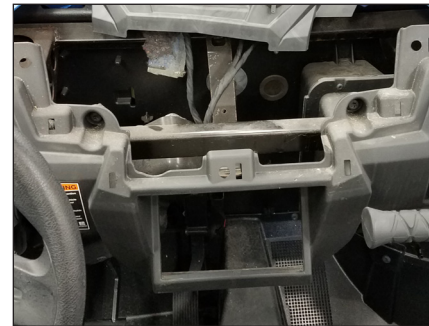
STEP 5

Unclip and remove the dash light from the lower dash panel.



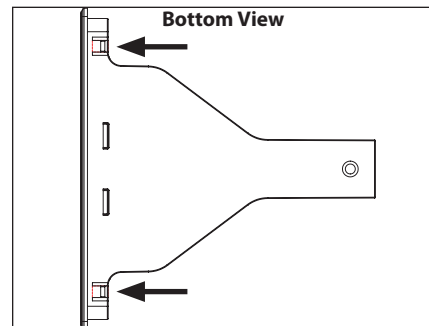
STEP 6

Remove the indicated U-nut from the lower dash panel.



STEP 7

Unclip the lower dash panel, and remove the panel from the vehicle.



STEP 8

Note the two indicated outer tabs on the bottom of the Dash Kit.

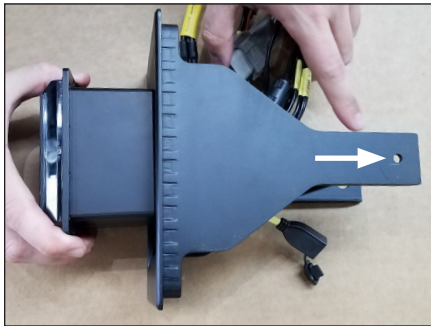
For 2014-2018 model vehicles: Leave the tabs in place.

For 2019-Up model vehicles: Use a pair of pliers to break off the tabs.



STEP 9

Remove the trim ring from the MM50.



STEP 10

With the smaller hole to the top, pass all wiring and cables of the MM50 through the Dash Kit, as shown. Slide the MM50 back until flush with the Dash Kit flange.



STEP 11

Align the holes of the MM50 mounting flange with the holes in the Dash Kit flange.

Pass a #8 x 3/4" Stainless Steel Phillips Pan Head Screw through each of the holes in the MM50 mounting flange, thread into the holes in the Dash Kit flange, and fully tighten.



STEP 12

Slide the factory U-Nut removed from **Step 6** over the upper hole in the back of the Dash Kit, as shown.



STEP 13

Reinstall the trim ring onto the MM50.



STEP 14

Pass all wiring and cables of the MM50 through the opening in the lower dash panel. Push the Dash Kit into the panel until it snaps into place.

Reinstall the dash light. Reinstall the Torx bolt removed in **Step 4** through the factory U-Nut installed in **Step 12**. Reinstall the upper dash panel and Torx bolts, and the front cover.



CONGRATULATIONS!

You have completed the installation for this model! Enjoy your new Stealthbox® Accessory!

JL AUDIO | How we play.®    

(954) 443-1100

www.jlaudio.com

All specifications are subject to change without notice. "JL Audio" and "How we play" are registered trademarks of JL Audio, Inc. "Ahead of the Curve" and its respective logo are trademarks of JL Audio, Inc.

Printed in USA • ©2019 JL Audio, Inc. • For more detailed information please visit us online at www.jlaudio.com.

JLA-SKU# 011541 • ver. 06.12.2019 • 10369 NORTH COMMERCE PARKWAY • MIRAMAR, FLORIDA • 33025 • USA



011541