

## Wood Care

Use a slightly damp cloth to clean as needed. Wipe dry.

Always wipe up moisture promptly and dry with a soft cloth.

Do not use cleaning products containing ammonia, alcohol or petroleum.

Avoid furniture polish as it can accumulate over time and leave a residue.

Over time, air and sunlight will change the color of natural wood. If your speaker is placed in a location where it is exposed to direct sunlight, occasionally rotate the speaker to allow a more uniform color to develop.

## Features

Grade A Solid  $\frac{3}{4}$ " Birch Historic Riverwood

Non-Toxic Stain and Lacquer Protector

High-Fidelity 7" Cast Woofer with Aluminum Phase Plug and Specialized Fiber/Kevlar Cone

High Velocity Premium Air Motion Transformer (AMT) Tweeter

Left/Right RCA Input

## Additional Powered Version Features

Ultra-Efficient, Low Distortion 50W Amplifier

Bluetooth 5.0 with AptX™ Technology



[service@riverwoodacoustics.com](mailto:service@riverwoodacoustics.com)

#riverwood

## Limited Lifetime Warranty

This product is guaranteed to be free of defects or workmanship.

Visit [www.riverwoodacoustics.com/warranty](http://www.riverwoodacoustics.com/warranty) for complete warranty details.



## USER MANUAL

# Muskoka

## Powered & Passive Speakers

### Product Overview

Welcome to the Riverwood Acoustics family and congratulations on purchasing our premium home wireless speaker made locally of 100% reclaimed riverwood from the Ottawa River. This speaker has been designed for acoustic linearity and deep bass extension.

Our audiophile-grade, 7" Mid-bass woofers are perfectly blended with our new Air Motion Tweeters providing maximum soundstage with an organic tonal sophistication. These Reference Bookshelf speakers utilize our custom reference cross-over network with impedance control to ensure perfect detail resolution. The MUSKOKA speakers are the only solid wood cabinet on the market with better qualities than traditional MDF. Our proprietary anchoring system has reinforced the front panels to ensure zero baffle movement even during maximum music playback.

Our engineering team utilized our full-size anechoic chamber and audio precision analyzers to perfectly design this remarkable audiophile-grade speaker. The Reference grade high-efficiency speakers will fill any size room with clear, undisturbed low, mid and high-frequency detail.

**The Powered or active version** systems come with an internal high-power dual-channel 250W ultra-low distortion bookshelf level and stereo configuration to fill the room with sound and style. The amplifier utilizes a modern ultra-low distortion >0.02% Class D amplifier with a high-resolution feedback network. The super-efficient and cool running amplifier has dual audio source input with automatic switching technology for Bluetooth 5.0 with Apt-X technology or stereo RCA input for easy connection to an external device such as a turntable or CD player without any external components. This system design is so simple that no external remote control is needed. Setup, auto-connect, and play stereo music within seconds!

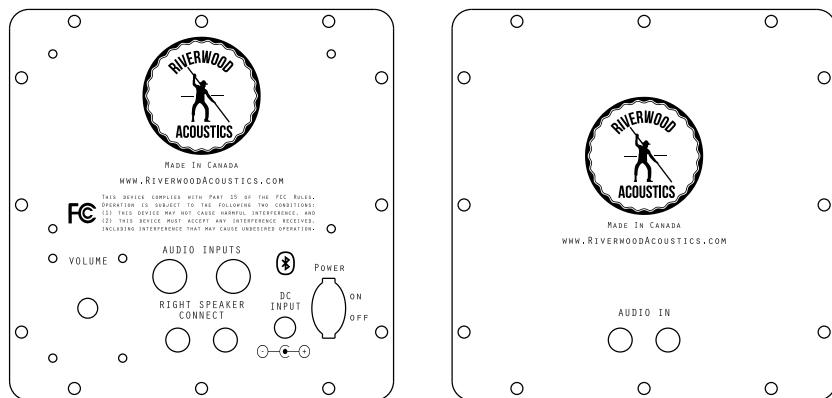
**The Passive version** of the MUSKOKA has the acoustic transducer design with the customized cross-over network and premium 5-way gold plated binding posts.

## Setup

Ensure that the POWER switch is in the OFF position before connecting the DC power adapter. Only use the power adapter provided (DC 12V 3A) as the wrong input voltage or amperage may damage the unit.

Plug the adapter into the DC INPUT port on the back of the speaker. Then plug the power cord into an AC power outlet (100-240V). Now it's safe to power on your speaker.

You will hear a BEEP when the speaker is switched ON. A second beep occurs when the speaker is connected via Bluetooth.



## Bluetooth Pairing Sequence

The speaker is designed to accept a Bluetooth connection as soon as it is powered on.

The MUSKOKA model speaker will show up as "Riverwood" in the list of devices you can connect to from your phone, tablet, or computer.

When the RCA inputs are also connected, the Bluetooth audio source has higher priority. When Bluetooth audio is paused or Bluetooth is disconnected the speaker will output the RCA signal.

## Support

We guarantee that you're going to love your new MUSKOKA Bluetooth speaker by Riverwood Acoustics. If you are unsatisfied with your purchase, you may return this product within **30 days** for a full-refund (less shipping costs).

Send an email to [service@riverwoodacoustics.com](mailto:service@riverwoodacoustics.com) with any questions.

## History

Your MUSKOKA model Bluetooth speaker by Riverwood Acoustics is sure become a conversation piece. There's a little bit of Ottawa history in every product we make. So, after you put on your favorite tunes and marvel at your new sound system for a while, kick back and let us take you on a trip through time....

Ask any musician and they'll tell you: the acoustic properties of fine wood is unmatched by any other material. The wood used in our speakers is what's known as "old growth" timber, which grew hundreds of years ago under ideal conditions thanks to lower light, cooler temperatures, and a pristine environment. This resulted in stronger, denser, and tighter-grained wood compared to the timber of today.

During the booming 1800s, the logging industry in the Ottawa Valley used the nearby waterways to transport fresh-cut logs from forests to sawmills. Many of these logs were so dense that they ultimately sank along their voyage.

Thanks to the high pressure, lack of oxygen, and cold conditions at the bottom of the Ottawa River, this "riverwood" has been perfectly preserved for well over a century, allowing us the opportunity now to reclaim one of nature's gifts while simultaneously saving our current forests and landscapes from logging and deforestation today.

These logs are retrieved from the depths of the Ottawa River by eco-divers, kiln-dried, and handcrafted by our team into a unique, rare speaker that boasts unparalleled sound quality.

## Our Commitment to Quality

We have spent countless hours engineering and perfecting our audio components and industrial design. We use the latest technologies available to construct and create our products. Our speakers are tested by professional musicians who demand audio excellence. These steps help us to ensure that our speakers perform above and beyond the expectations of those most important to us: our customers.

## Our Thanks

From all of us here at Riverwood Acoustics, we thank you for your purchase and hope your MUSKOKA model Bluetooth speaker brings you many years of enjoyment.

Spread the word using **#riverwood** on social media and send us your photos!