



**FAST**  
PERFORMANCE AND SAFETY

# INSTALLATION GUIDE

## FAST MAX 5

**TURY**

## 1. PRESENTATION

- 1.1 Functions
  - 1.1.1 Performance
  - 1.1.2 Eco Mode
  - 1.1.3 Original Mode
  - 1.1.4 Reverse Gear Assist
  - 1.1.5 Parking
  - 1.1.6 Lock
  - 1.1.7 Auto Lock - Smartphone
  - 1.1.8 Auto Lock - Magic Key
  - 1.1.9 Auto Lock - GPS Tracker - Alarm - Blocker
  - 1.1.10 High idle mode
- 1.2 Characteristics
- 1.3 Technical Specifications
- 1.4 Application
- 1.5 Package content

## 2. INSTALLATION

- 2.1 Tools and parts required
- 2.2 Pinout
- 2.3 Disconnecting the electronic accelerator
- 2.4 Installation schematic

## 3. PROGRAMMING AND SETTINGS

- 3.1 Download
- 3.2 Initial settings
- 3.3 Smartphone pairing
- 3.4 Accelerator pedal programming
- 3.5 User control and pairing password
- 3.6 Acceleration maps setting
- 3.7 Eco mode setting
- 3.8 Activating the original mode of acceleration
- 3.9 Reverse gear assistant
- 3.10 Activating and deactivating the Parking function
- 3.11 Activating and deactivating the manual Lock function
- 3.12 Auto Lock - Smartphone
- 3.13 Auto Lock - Magic Key (Not included in the product)
- 3.14 Auto Lock - GPS Tracker - Alarm - Blocker
- 3.15 High idle mode
- 3.16 Automatic closing of the FAST MAX APP
- 3.17 Language Selection
- 3.18 Hide logos

## 4. SECURITY

- 4.1 Technology

## 5. VALIDATION

- 5.1 Troubleshoot



# 1. PRESENTATION

**CONGRATULATIONS YOU HAVE PURCHASED A HIGH QUALITY PRODUCT WHICH, FROM NOW ON, WILL ENABLE YOU TO HAVE MAXIMUM ANTI-THEFT SECURITY IN YOUR VEHICLE AND MAKE IMPROVEMENTS BY ADJUSTING IT TO YOUR DRIVING PREFERENCES.**

**FAST MAX REDUCES THE ORIGINAL ACCELERATION RESPONSE TIME DELAY. WITH THIS, YOUR VEHICLE WILL HAVE THE SAME TECHNOLOGY ALREADY USED IN HIGH-END SPORTS CARS, WITHOUT CAUSING ANY INCOMPATIBILITY WITH YOUR VEHICLE. CAN BE OPERATED THROUGH THE FAST MAX APP. YOU CAN ALSO USE ECO MODE TO HELP REDUCE FUEL CONSUMPTION.**

Read the entire installation manual completely. Pay special attention to the icons below, because they have fundamental installation tips.

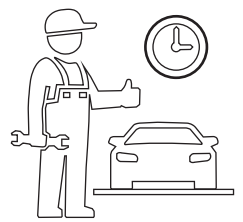


**ATTENTION, TIPS  
AND CARE**



**TECHNICAL SUPPORT:**

JUST CLICK TO  
START THE SERVICE



**INSTALLATION  
TIME:**

THE AVERAGE  
INSTALLATION TIME IS  
ABOUT 30 MINUTES



We recommend that the installation of **TURY** products is always carried out by an **experienced, skilled and qualified professional who has all the necessary tools to carry out the procedure.**

## 1.1 FUNCTIONS

**1.1.1 PERFORMANCE:** The FAST MAX product offers drivers the possibility of adjusting the vehicle's acceleration response via the application on their smartphone or tablet. Through the 4 acceleration maps City, Tour, Sport and Fast, it is possible to adjust the vehicle's ideal acceleration profile according to your needs and preferences, with 9 levels for adjusting the acceleration gain on each map. This feature, already present in high-end vehicles, is now available to install in your vehicle. The settings are flexible and allow users to change between them, including being able to return to the vehicle's original mode at any time.

**1.1.2 ECO MODE:** ECO mode has a 9-level map for adjusting the negative accelerator gain, which will provide less accelerator response the higher the level setting, but always with good driving fluency. The higher the adjustment level of the ECO mode, the greater the reduction in the vehicle's fuel consumption. If there is full acceleration while using ECO mode, for safety reasons the vehicle will respond with the original acceleration in this condition. Ideal for taxi drivers, application drivers, fleet drivers and users who want to drive to save fuel when there is no need for a more dynamic acceleration response.

**1.1.3 ORIGINAL MODE:** To return to the vehicle's original acceleration mode, simply click on the OFF switch as shown in the image below. You can activate and deactivate FAST MAX and select the maps and acceleration levels at any time, but avoid adjusting while the pedal is accelerating.

**1.1.4 REVERSE GEAR ASSIST:** This optional FAST MAX function will inhibit the action of any acceleration map, maintaining the original acceleration whenever the vehicle's reverse gear is engaged. After disengaging the reverse gear, the acceleration will remain original for a further 5 seconds, guaranteeing safety during the vehicle's entire maneuvering time.

**This REVERSE GEAR ASSIST function is optional and is only available if the BROWN WIRE is connected to the vehicle's REVERSE gear illumination signal.**

**1.1.5 PARKING:** This function allows you to limit the vehicle's acceleration to 50%, 40%, 30%, 20% or 15% of the vehicle's original acceleration. It's ideal for borrowing the vehicle from valet parking lots, workshops, driving lessons for beginners and other situations where you want to restrict the vehicle's acceleration. To activate the function, simply hold down the PARKING switch for 2 seconds and to deactivate the function, simply click on any other switch on the main screen.



**1.1.6 LOCK:** This function is an anti-theft protection for the vehicle which, once activated, will block the operation of the electronic accelerator. To activate the function, simply hold down the LOCK switch on the application for 2 seconds and then confirm by pressing OK (two-level activation for security). To remove the pedal lock, simply open the application and connect the Smartphone to the FAST MAX, which will return to the last selected mode automatically or click on any other switch on the main screen if it is connected. Suitable for use whenever you park your vehicle on public roads and never activate this function while the vehicle is in motion.

**1.1.7 AUTO LOCK - SMARTPHONE:** Function developed to enable automatic locking and unlocking of the vehicle's accelerator pedal, guaranteeing anti-theft protection. Once the smartphone's AUTO LOCK function has been activated in the application, every time the vehicle is started FAST MAX will activate the pedal's automatic lock and will search for the presence of paired smartphones. Once it locates the presence of a registered smartphone, the pedal will be unlocked immediately. If it does not locate the presence of a smartphone, the vehicle's acceleration will remain fully locked and LOCK mode will be activated. On the Android system, automatic unlocking is carried out with the application in the background or closed. On the iOS system, automatic unlocking is only carried out when the application is open in the background. If the application is selected in the foreground, the pedal will also unlock automatically. Once the vehicle's switched key has been switched on and the pedal has been unlocked, it will no longer lock in the switched key cycle, even if the smartphone's battery runs out. On the Apple line, the iOS operating system tends to close and deactivate the FAST MAX APP automatically even when it is running in the background due to battery management issues, and in these cases it will be necessary to click to open the application again for the FAST MAX APP and the function to work again.

On some smartphones, when they are turned off, you will need to turn the Bluetooth module off and on for the AUTO LOCK footswitch deactivation function to work again. This function is located in the application under MENU/AUTO LOCK/SMARTPHONE.

**1.1.8 AUTO LOCK - MAGIC KEY:** The MAGIC KEY Bluetooth controller is not included in the product and, once purchased, registered and activated in the application, is intended to be a presence key in the vehicle's protection system.

You can register up to 4 MAGIC KEY's per FAST MAX and it prevents theft, armed robbery or for fleet management security. It operates in exactly the same way as the AUTO LOCK function via Smartphone, with the pedal being locked and unlocked after the vehicle has been started, the only difference being that after the vehicle has been started and the pedal has been unlocked, if the MAGIC KEY is no longer located by FAST MAX, the vehicle will activate the pedal lock according to the MAGIC KEY lock settings. It is possible to set the mode of the start of the lock at the moment of activation: IMMEDIATE or PROGRESSIVE, and also the type of lock: TOTAL (complete pedal lock) or PARTIAL (maintains a minimum acceleration on the pedal).

The time for activating the start of the progressive or immediate locking can be programmed from 1 to 20 minutes. After the programmed time has elapsed, the configured locking protocol starts, where the immediate locking system will lock the pedal immediately and the progressive locking system will start by limiting acceleration by 50% and every 10 seconds it will reduce by 10% until the progressive locking protocol ends, which can be TOTAL or PARTIAL depending on the configuration. Detection of the presence of the Magic Key control by FAST MAX is only possible with the FAST MAX APP in the background or closed (disconnected from the module), with the product paired in the foreground and the Magic Key will not be blocked.

You can configure and enable the permission to deactivate the AUTO LOCK function via Smartphone by accessing the FAST MAX APP and using the registered pairing password (we recommend changing the original pairing password for security reasons - see page 9).

If you choose to buy the Magic Key, read its installation manual for more details. This function is located in the application under MENU/AUTO LOCK/MAGIC KEY and is part of TURY's international patent application.

**1.1.9 AUTO LOCK - GPS TRACKER - ALARM - BLOCKER:** This function is designed for situations in which you want to externally lock the electronic accelerator via a GPS Tracker, alarms or vehicle locker. Once the GPS Tracker's AUTO LOCK function has been activated in the application and the lock has been set by the tracker, the progressive lock system, as described above for the Magic Key, will be activated immediately.

It is possible to set the mode in which the lock starts at the moment of activation: IMMEDIATE or PROGRESSIVE, and also the type of lock: TOTAL (complete pedal lock) or PARTIAL (maintains a minimum acceleration on the pedal). After activation, the immediate locking system will lock the pedal immediately and the progressive locking system will start with an acceleration limitation of 50% and every 10 seconds it will reduce by 10% until after 1 minute the acceleration will be completely locked.

It is possible to configure and enable the permission to deactivate the AUTO LOCK function via Smartphone by accessing the FAST MAX APP and using the registered pairing password (we recommend changing the original pairing password for security - see item 3.5). Compatible with any GPS tracker or alarms on the global market, it accepts various types of activation/deactivation commands (fixed negative, single or double pulse negative). FAST MAX has a specific type of special pulse for OEM applications only, in which case the tracker must have this protocol on the lock signal output. TURY, the manufacturer of FAST MAX, has partnerships with most of the world's major vehicle tracking companies and supplies this electronic communication protocol only to tracker manufacturers. When activated, this function is a priority for the user of the vehicle, because in cases of theft or robbery only the tracker itself can unlock the vehicle, but there is the possibility of configuring in the application that this unlocking is also possible via smartphones paired to the FAST MAX. This function is located in the application under MENU/AUTO LOCK/GPS TRACKER and is part of TURY's international patent application.

**1.1.10 HIGH IDLE MODE:** This function has been developed for professional mechanics who wish to keep the vehicle at a fixed acceleration in order to keep the RPM constant for specific maintenance services that require this procedure, without the need for someone to hold down the accelerator pedal. To activate this function in the application, go to MENU/FIXED ACCELERATION, accelerate the pedal until it reaches the desired RPM, click on the OFF switch and then click on the START switch (two-level activation for safety).

At this point you can remove your foot from the pedal and the acceleration will be maintained at the programmed point.

There are three ways to deactivate this function: click on the ON switch, step on the accelerator pedal or click on any map or level.



## 1.2 CHARACTERISTICS

- It can be installed in any vehicle with an electronic accelerator, with manual or automatic gearbox and with any type of fuel. From light vehicles, pick-ups, SUVs, vans, trucks, motorcycles, etc;
- Its installation is carried out using the original connectors located on the vehicle's electronic accelerator, very quickly and simply, maintaining all the vehicle's originality and warranty;
- Once the pedal has been installed and programmed, any acceleration to which the vehicle is subjected will see a gain in response while the product is using one of the performance maps and according to the acceleration level selected.

The product's reverse wire is optional and can be installed in the vehicle to prevent instant acceleration when engaging the vehicle's reverse gear with any of the performance maps activated;

- FAST MAX always stores the last acceleration level configured in each map and whenever it is switched on the vehicle will load the last operating mode. You won't lose your settings in the event of a battery change;
- Exclusive FAST MAX APP application to control all functions from your smartphone;
- In the iOS system and some versions of Android, when the Smartphone is turned off and on or restarted, it is necessary to open the FAST MAX APP again in order for it to work again via the Auto Lock - Smartphone function.

## 1.3 TECHNICAL SPECIFICATIONS

- Operating current: 10mA
- Operating current models FAST MAX 5.5 and 5.6: 4,7mA
- Input voltage: 3V3 / 5V

## 1.4 APPLICATION

Vehicles with electronic accelerator, manual or automatic gearboxes and any type of fuel.

To check vehicles (manufacturers, models, versions, and years) to which this product is applicable go to [www.tury.com.br](http://www.tury.com.br) and search in the product finder.

## 1.5 PACKAGE CONTENT

- Electronic Module;
- Plug and Play Main Harness;
- Nylon tie.



# 2. INSTALLATION

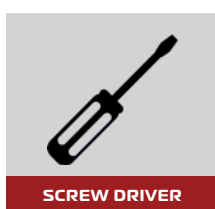
## 2.1 TOOLS AND PARTS REQUIRED



INSULATING TAPE



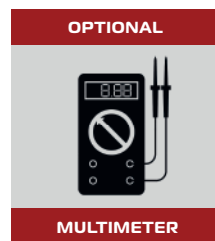
ANTI-NOISE FOAM



SCREW DRIVER



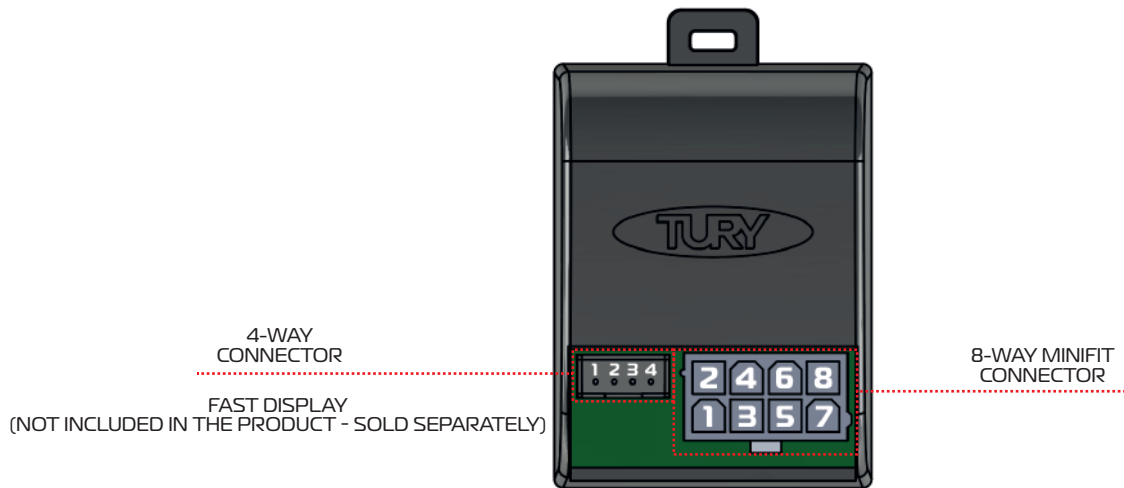
GLOVES



MULTIMETER

\* The tools and parts above are not included with the product.

## 2.2 PINOUT



### 8-WAY MINIFIT CONNECTOR

PIN	FUNCTION	WIRE COLOR	Ø
1	TPS1 - OUT POSITION SENSOR		0,50mm
2	TPS1 - IN POSITION SENSOR		0,50mm
3	TPS2 - OUT POSITION SENSOR		0,50mm
4	TPS2 - IN POSITION SENSOR		0,50mm
5	(-) 0V / GROUND		0,50mm
6	3V3 / 5V POWER SUPPLY		0,50mm
7	REVERSE SIGNAL - REVERSE GEAR ASSIST		0,50mm
8	NEGATIVE INPUT - EXTERNAL AUTO LOCK		0,50mm

### FAST DISPLAY

PIN	FUNCTION	WIRE COLOR	Ø
1	(-) 0V / GROUND		0,20mm
2	+ 5V / 3V3		0,20mm
3	TX COMMUNICATION		0,20mm
4	RX COMMUNICATION		0,20mm

## 2.3 DISCONNECTING THE ELECTRONIC ACCELERATOR

If you don't have a multimeter, with the driver's door open, turn off and remove the switched key from the contact and wait 10 minutes before carrying out item 2.4.

This time is necessary to wait for the electronic accelerator pedal power supply to finish timing out. In many vehicles this time is shorter.

In vehicles equipped with a presence key, keep it outside the vehicle and at a distance of 1 meter. In many vehicles, stepping on the brake during the original timer restarts the power supply.



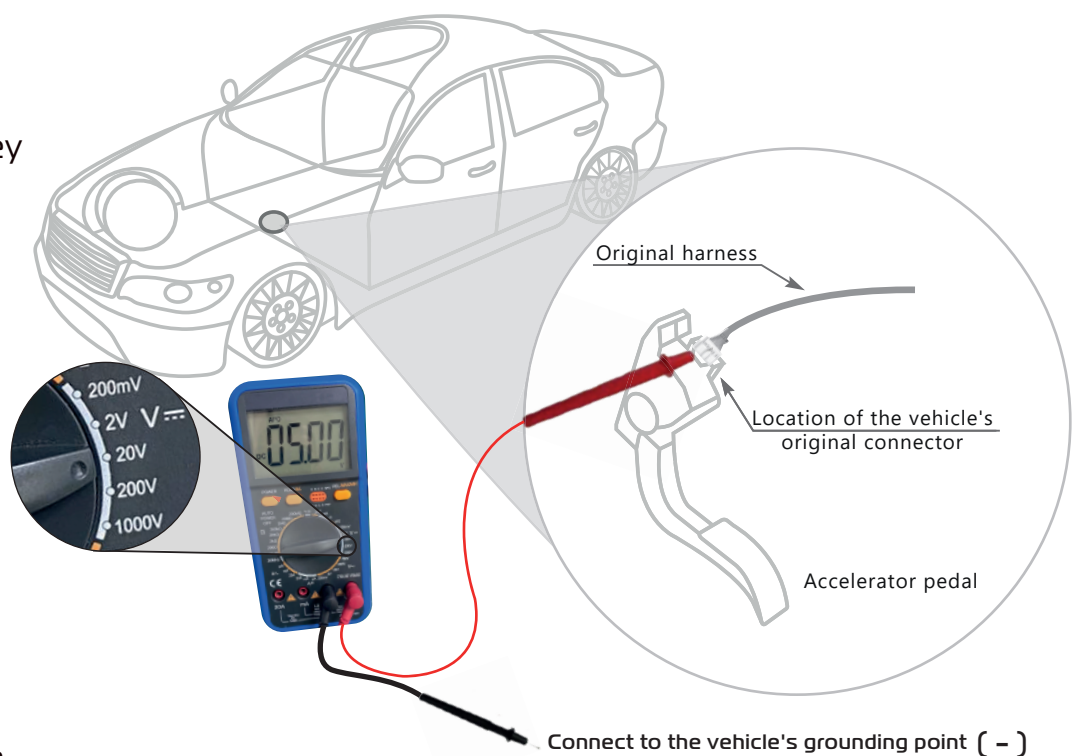
1 - Switch off the switched key



2 - Wait 10 minutes until the pedal's power timer runs out, as shown in the figure opposite.



3 - Keep the key away from the vehicle, do not open or close any doors and do not apply the brake pedal.



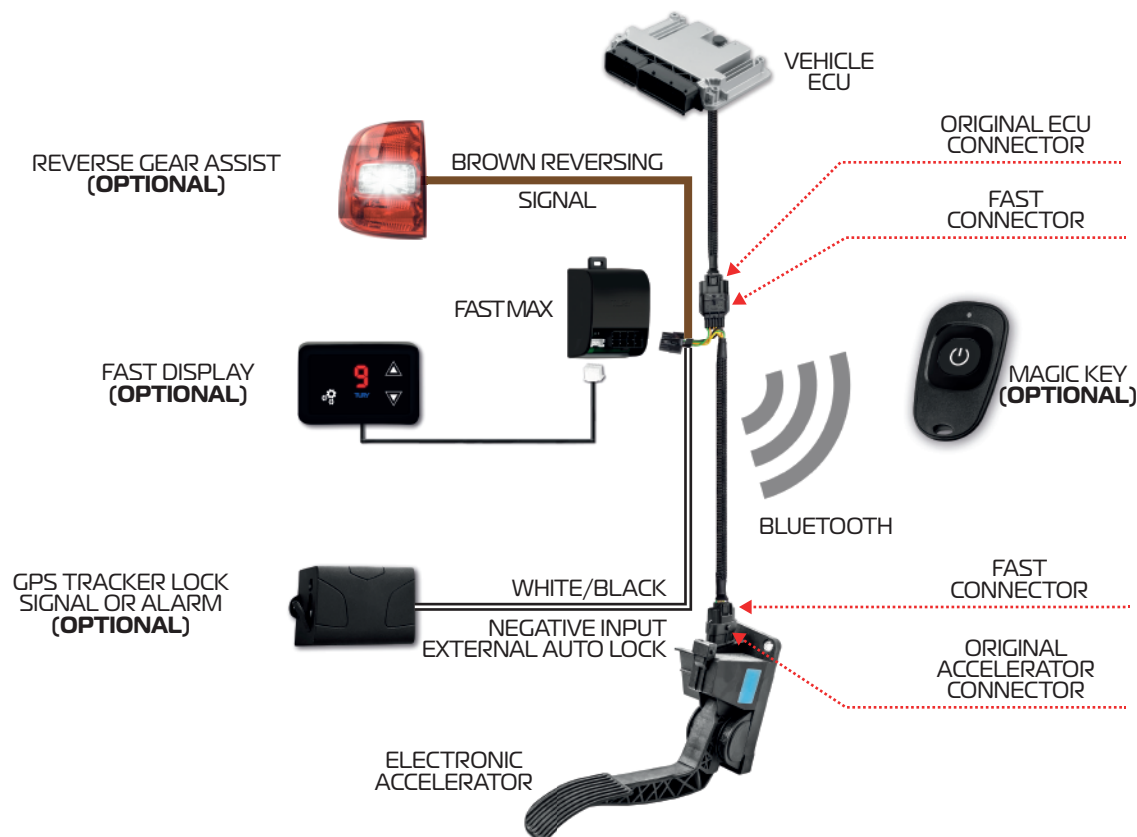
**USE THE MULTIMETER TO CHECK THE END OF THE ACCELERATOR PEDAL POWER SUPPLY TIMING**



If the original connector is disconnected while the electronic accelerator is energized, an anomaly light may be activated on the vehicle's dashboard, in some cases requiring an automotive scanner or disconnecting the battery to turn this light off. In some cases, it is possible to turn off the injection light by switching the car off and on again a few times.

## 2.4 INSTALLATION SCHEMATIC

- 1º Make sure that the electronic accelerator is de-energized;
- 2º Disconnect the electronic accelerator connector (remember, only carry out this step after carrying out item 2.3);
- 3º Connect the original accelerator connector to the FAST MAX connector;
- 4º Connect the FAST MAX connector to the electronic accelerator.
- 5º Secure the FAST MAX control unit with the plastic cable tie in a place where it is completely isolated;
- 6º After fixing the FAST MAX central unit and harness, insulate them with foam tape to avoid noise in the vehicle.



- **Installation of the reversing signal:**

By installing the BROWN wire on the +12V wire of the original reverse gear backlight signal, the product will activate the Reverse Gear Assist function, which will set the FAST MAX to the original acceleration mode whenever the vehicle is in reverse gear and will remain in this state for 5 seconds after disengaging reverse gear, automatically returning to the selected map and helping with maneuvering time. (read item 1.1.4).

- **Installation of the tracker's negative locking signal:**

By installing the WHITE/BLACK wire ( (-)INPUT - GPS TRACKERS) of the FAST MAX, it will be possible to activate the external accelerator lock function controlled by the tracker (read item 1.1.9). For greater security of the product and consequently of the vehicle, we recommend the optional installation of the FAST SAFE BOX (not included in the product - sold separately).



In some vehicles it is necessary to loosen the accelerator body frame screws to access the electrical connection of the original electronic accelerator connector.



## 3. PROGRAMMING AND SETTINGS

### 3.1 DOWNLOAD

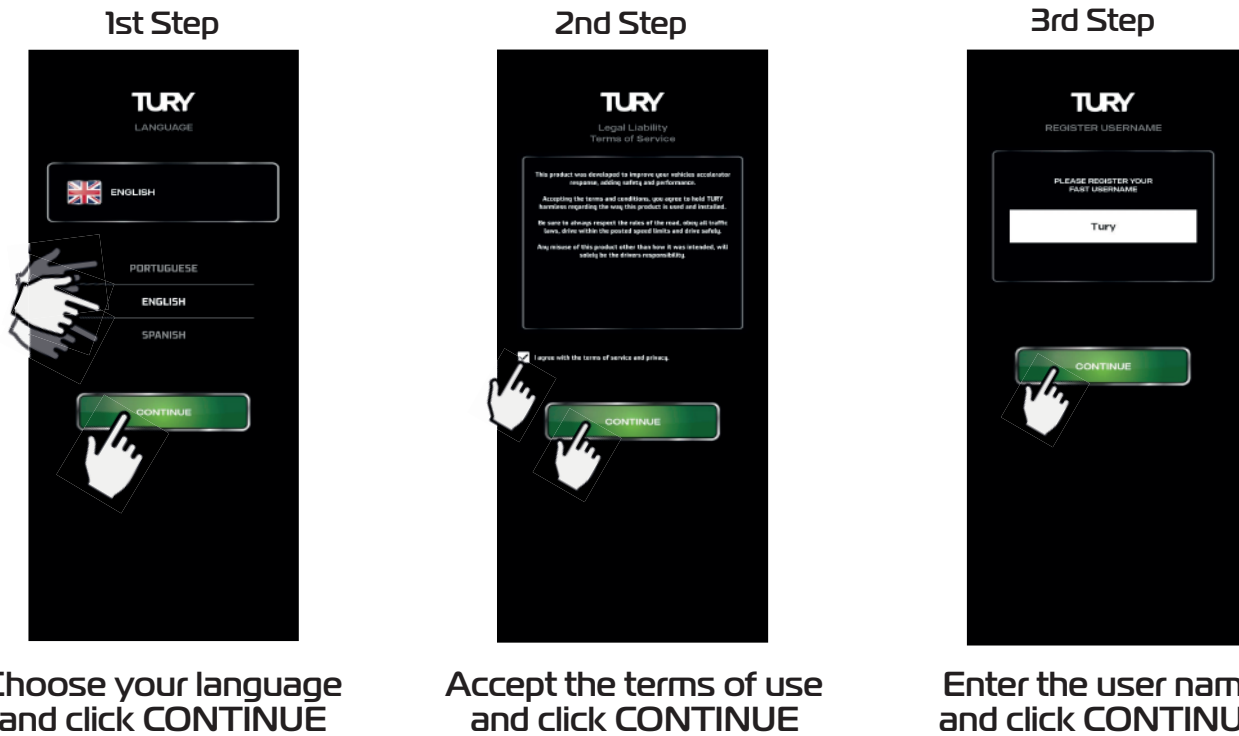
The application for this product is called FAST MAX APP and can be downloaded for free from the Play Store or the Apple Store. The FAST MAX APP allows you to control all the FAST functions, available for Android and iOS. To use this app, see the instructions and video tutorials available on the app.

**Click on the links below or view the QR Code with your smartphone camera to download the application.**





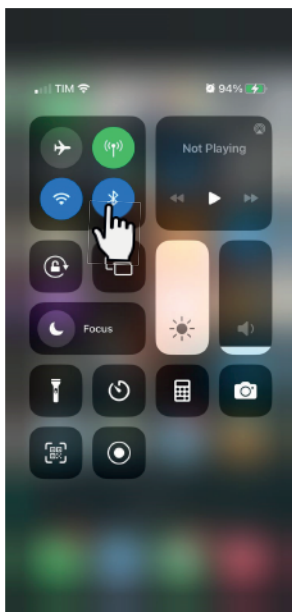
## 3.2 INITIAL SETTINGS



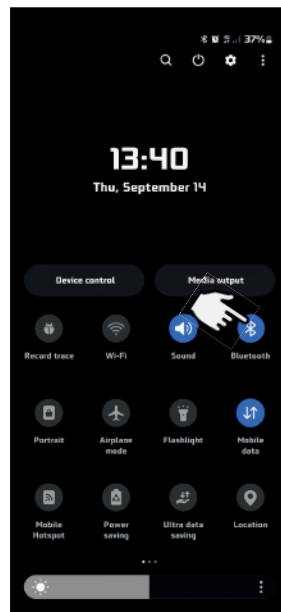
For better operation and performance of the FAST MAX APP on ANDROID devices, periodically clean out the temporary files (caches) that accumulate as the APP is used, simply by going to the device's storage settings.

## 3.3 SMARTPHONE PAIRING

To pair the FAST MAX product with your ANDROID or iOS smartphone, you must first activate the device's BLUETOOTH module as shown below:

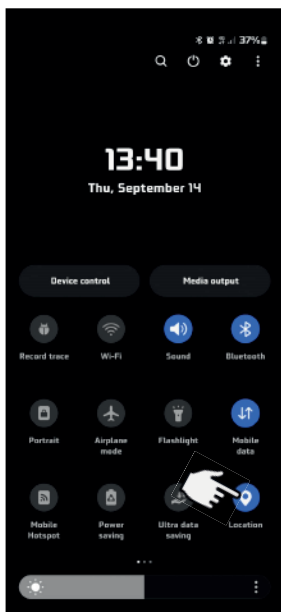


iOS

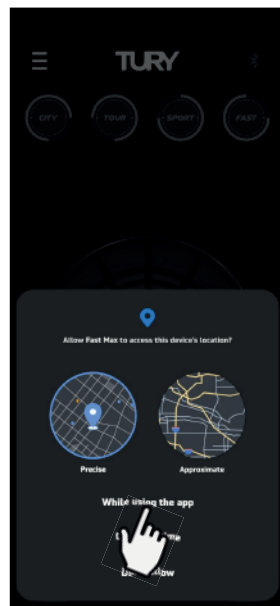


Android

Only on the ANDROID system is it necessary to activate and enable the device's LOCATION system according to the procedures below:



Activate localization



While using the App



Activate permission

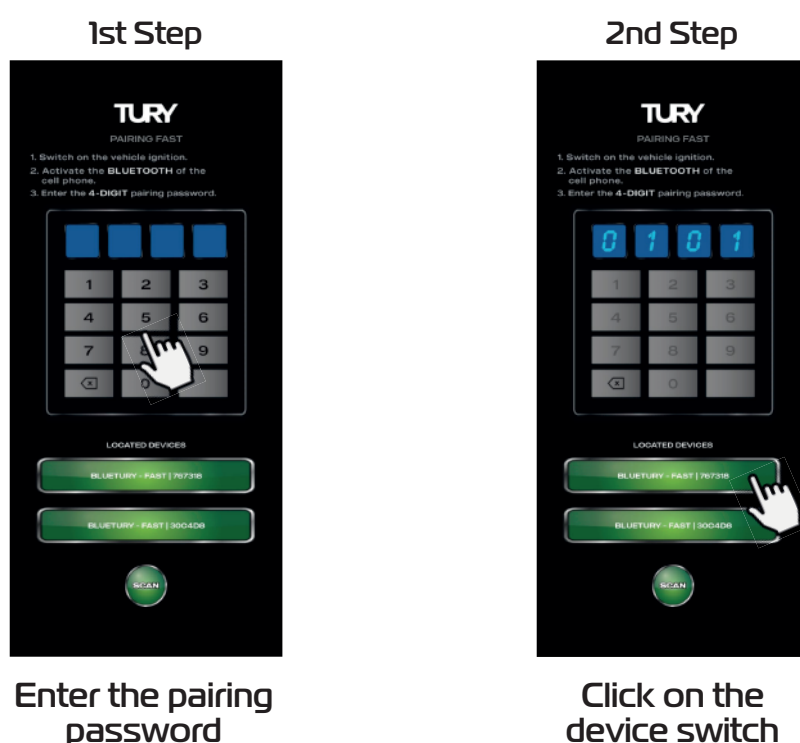


For the FAST MAX APP to maintain constant communication without interrupting data exchange, press the FAST MAX APP icon and click on "APP INFORMATION", then deactivate the option "REMOVE PERMISSIONS IF APP IS NOT USED".

To perform the first pairing, use the original product password "0101". Follow the steps below:  
 1º When you enter the pairing screen, the devices will be found automatically. Enter the correct pairing password for the desired device;

2º Click on the switch for the device you want to pair.

**Note: If you enter the wrong password or enter it without entering any password, you will leave the pairing screen and return with the message "INCORRECT PASSWORD". If this happens, enter the correct password and click on the device switch again.**



Enter the pairing password

Click on the device switch

In addition to the video on pairing and programming the pedal, we have other videos on how to use all the features of the FAST MAX via the FAST MAX APP.



We recommend that after the first pairing or afterwards, you change this original password for security purposes in MENU / SETTINGS / USERS/PASSWORD to prevent anyone from pairing without your permission. Only previously paired smartphones will be able to use the FAST MAX APP and access its functions.

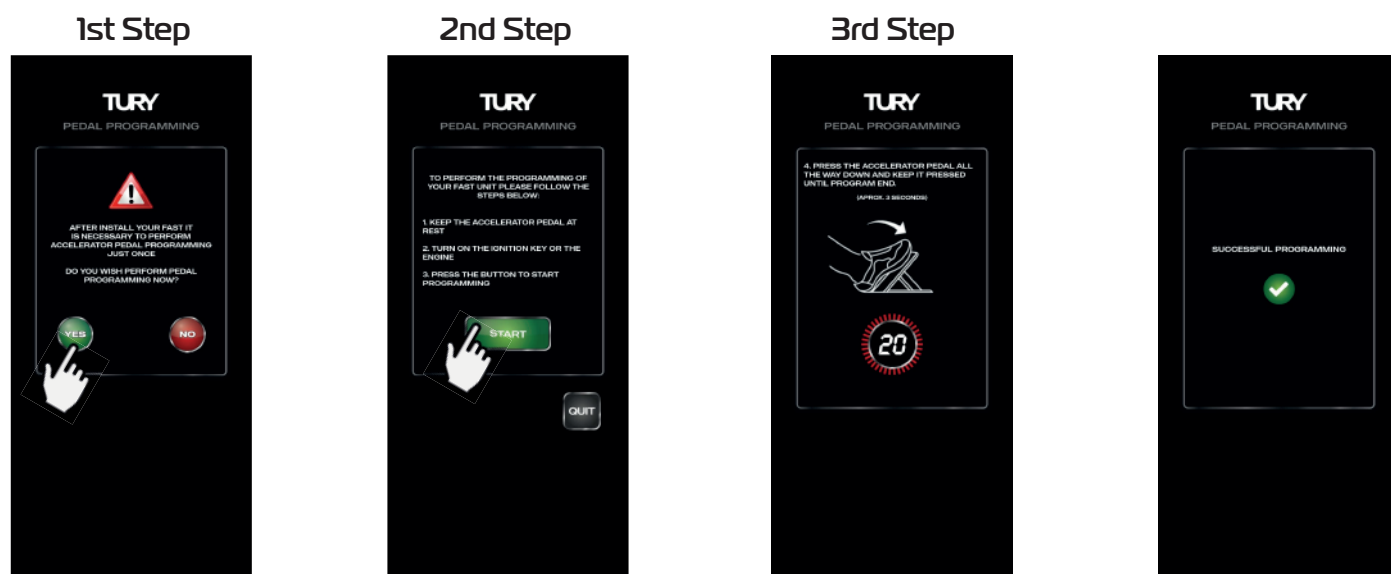
### 3.4 ACCELERATOR PEDAL PROGRAMMING

After installation and the first pairing with the Smartphone using the password, the FAST MAX APP will automatically open the screen to program the accelerator pedal.

It is mandatory to program the pedal before using the product in any other operating mode in order for the product to function correctly. You can access the pedal programming in the FAST MAX APP under MENU/PEDAL PROGRAMMING. Pedal programming must be carried out only once and can be done with the engine switched off or on, as there will be no acceleration during the programming procedure (except for FAST MAX 5.4).

Watch the video to program the accelerator pedal and follow the steps below:

**NEVER CHANGE THE MAPS WITH THE ENGINE RUNNING BEFORE PROGRAMMING THE PEDAL.**



Click on YES

Click on START

Press the accelerator pedal all the way down and hold.

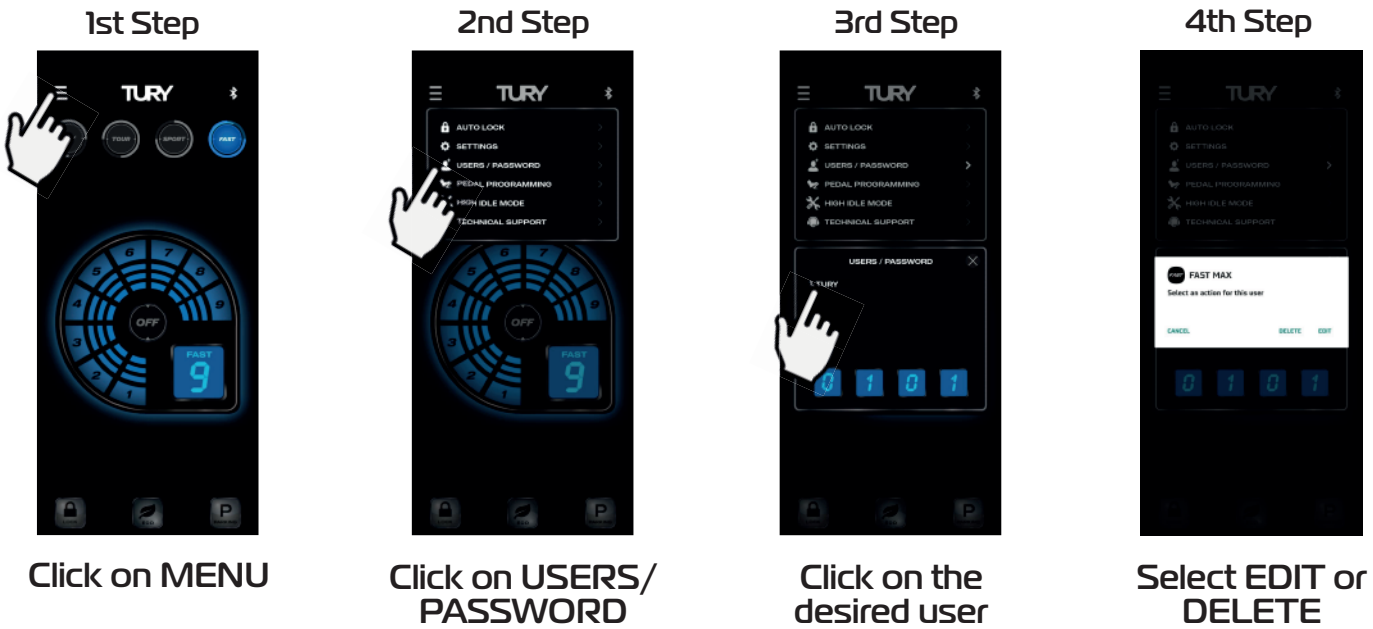
Programming completed



It is mandatory to program the pedal before using the product in any other operating mode in order for the product to function correctly. If you wish to program the pedal after pairing, go to MENU / PEDAL PROGRAMMING in the FAST MAX APP and follow the procedures above. The pedal can be programmed with the motor switched off or on and there will be no motor acceleration during programming.

### 3.5 USER CONTROL AND PAIRING PASSWORD

Here's another advantage of your FAST MAX product: in addition to total control of paired users, you can also change the pairing password from the App, remembering that the maximum limit is 4 users. To edit or delete a user, open the FAST MAX APP and click on MENU / USERS/PASSWORD. After viewing the registered users, click on the user you want to edit or delete and confirm as shown below:



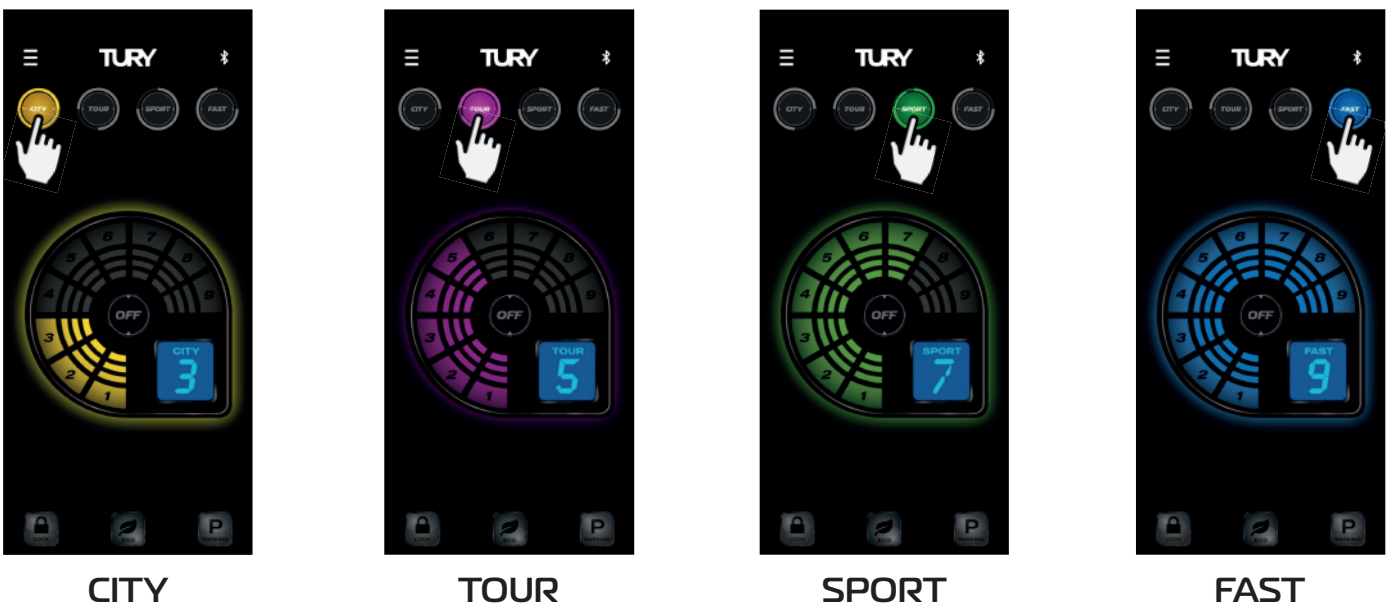
After confirming the deletion of your user, when you next open the FAST MAX APP you will need to pair again.

To change the pairing password, simply click on the current password, enter the new 4-digit password and confirm with the ENTER switch as shown below.



### 3.6 ACCELERATION MAPS SETTING

Once the FAST MAX pedal has been installed, paired and programmed, it is ready to use. It starts in original mode and to select the acceleration map, simply click on the desired switch: CITY, TOUR, SPORT or FAST.



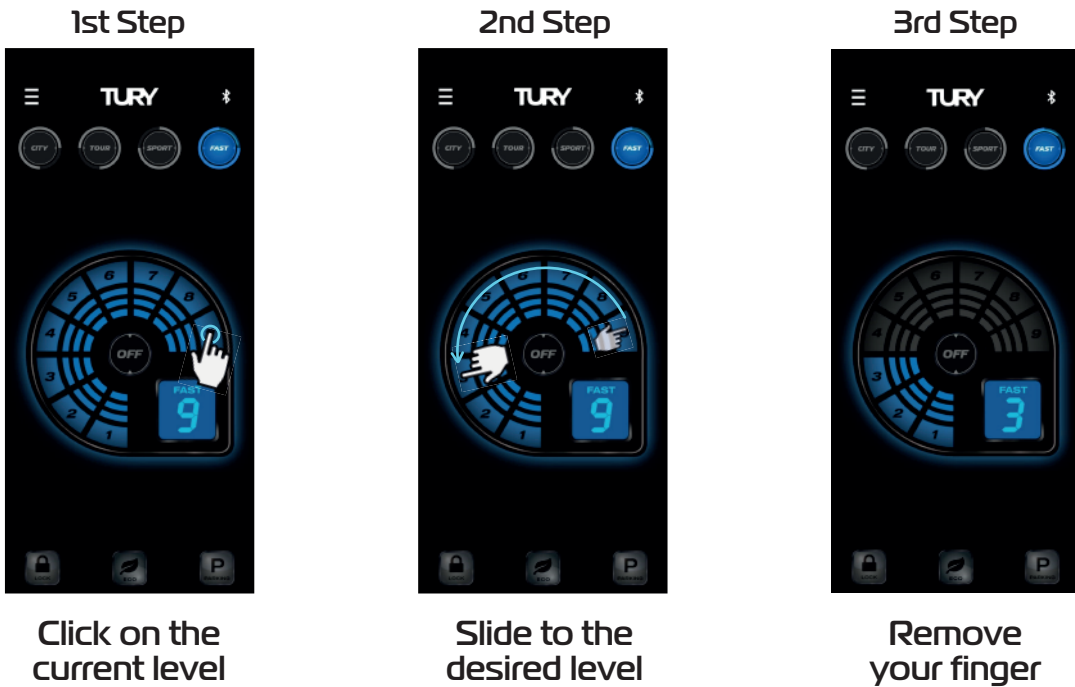


After selecting the desired map, adjust the acceleration level from 1 to 9.

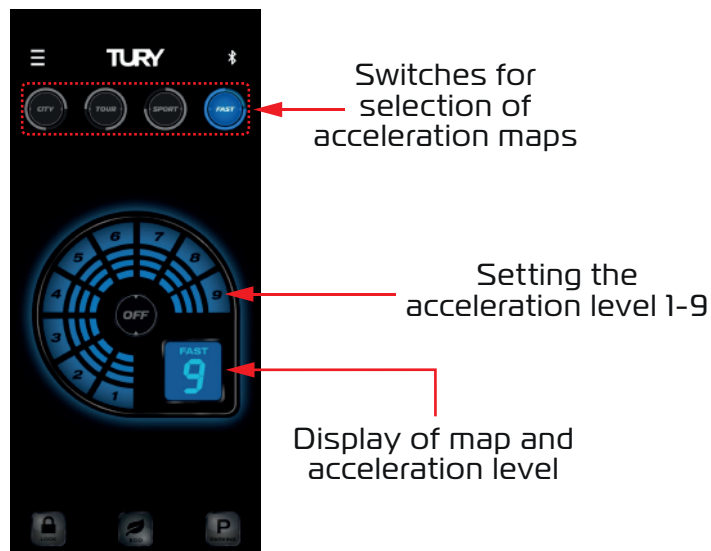
There are two ways to adjust the acceleration level:

- 1° Click directly on the desired level;
- 2° Click on the last lit level, scroll to the desired level;
- 3° Release your finger to update the new setting.

Below is an example of how to change from level 9 to level 3 on the FAST map.



You can select any level of adjustment in each of the 4 acceleration maps and the higher the level, the greater the gain in acceleration response.



Some vehicles may be restricted from using the maximum levels on the FAST Map. In such vehicles, use the lower levels in everyday life and the maximum levels only when overtaking.

### 3.7 ECO MODE SETTING

ECO mode has an acceleration map with 9 levels for adjusting the negative acceleration gain. The higher the ECO mode setting level, the greater the reduction in the vehicle's acceleration response and fuel consumption, but always with good driving fluency. If there is full acceleration while using ECO mode, for safety reasons the vehicle will respond with the original acceleration in this condition. Ideal for taxi drivers, app drivers, fleet drivers and users who want to drive to save fuel when there is no need for a more dynamic acceleration response.



ECO mode

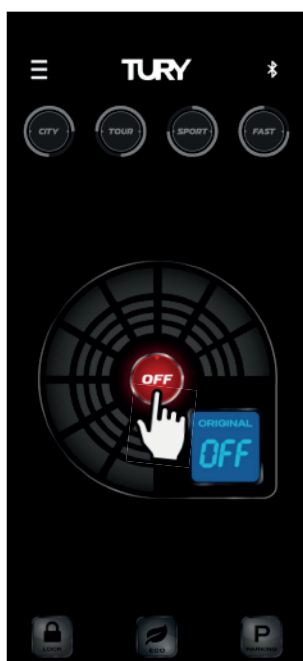


The higher the ECO mode setting, the greater the reduction in acceleration response and the vehicle's fuel consumption.

### 3.8 ACTIVATING THE ORIGINAL MODE OF ACCELERATION

To return to the vehicle's original acceleration mode, simply click on the OFF switch as shown in the image below.

You can activate and deactivate FAST MAX and select the maps and acceleration levels at any time, but avoid adjusting while the pedal is accelerating.



ORIGINAL mode

When you return to the acceleration maps, the last acceleration level set in each map is always stored. So the user can easily change the maps already set to use each of them for different needs, such as overtaking, traffic, highways, gear changes, hills, the city, without the need to reprogram the acceleration levels.

### 3.9 REVERSE GEAR ASSISTANT

When you return to the acceleration maps, the last acceleration level set in each map is always stored. So the user can easily change the maps already set to use each of them for different needs, such as overtaking, traffic, highways, gear changes, hills, the city, without the need to reprogram the acceleration levels.



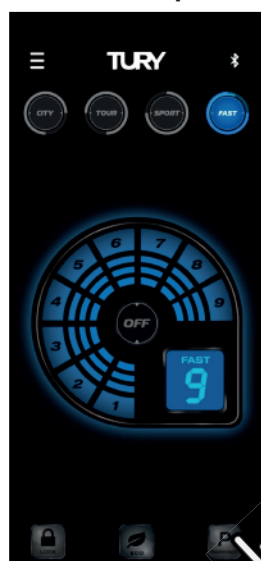
This REVERSE GEAR ASSISTANT function is optional and is only available if the BROWN WIRE is connected to the vehicle's REVERSE gear illumination signal.

### 3.10 ACTIVATING AND DEACTIVATING THE PARKING FUNCTION

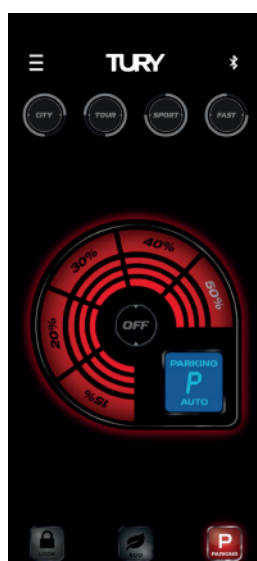
This function allows you to limit the vehicle's acceleration to 50%, 40%, 30%, 20% or 15% of the vehicle's original acceleration. It's ideal for borrowing the vehicle from valet parking lots, workshops, driving lessons for beginners and other situations where you want to restrict the vehicle's acceleration. To activate the function, simply hold down the PARKING switch for 2 seconds and to deactivate the function, simply click on any other switch on the main screen.

1º Open the FAST MAX APP and on the main screen press the letter P (PARKING) for 2 seconds, the function will be activated immediately.

1st Step



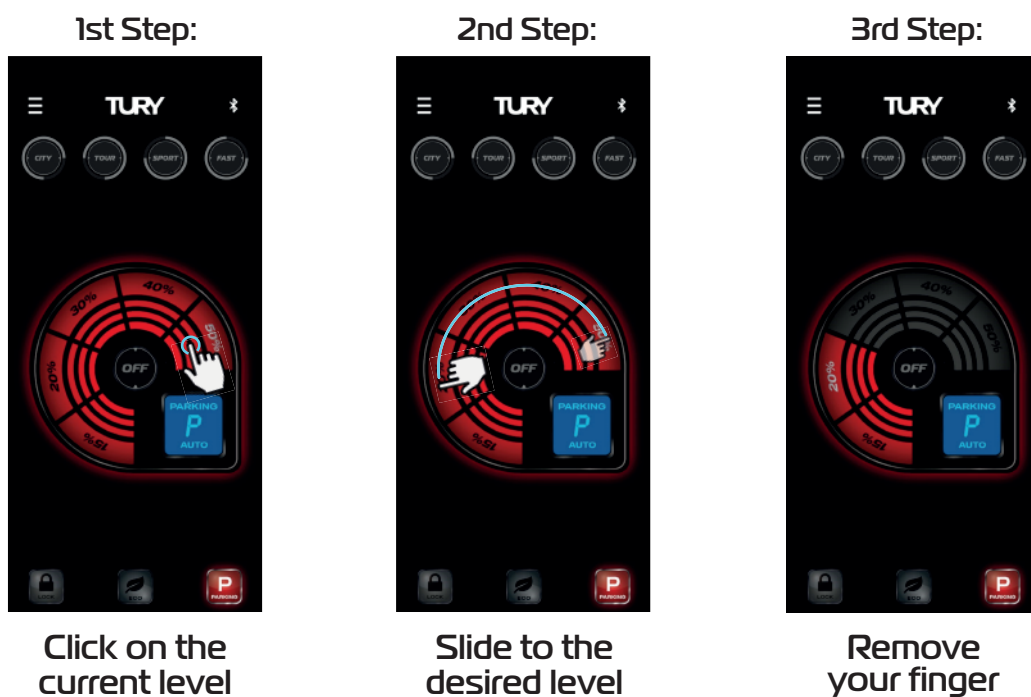
Press for 2 seconds



Function activated

Choose the maximum acceleration level (between 15% and 50%) according to your needs or parking location, as the acceleration response may vary according to the power of each engine;

- 1° Click directly on the desired level or click on the last lit level;
- 2° Slide to the desired level;
- 3° Release to update the new setting.



If the AUTO LOCK SMARTPHONE function is activated, after activating the PARKING function this function will be deactivated until you exit the PARKING function and the pedal will not lock automatically after turning on the switched key while using the PARKING function.

If the AUTO LOCK MAGIC KEY function is activated, after activating the PARKING function this function will be deactivated until you exit the PARKING function and there will be no automatic pedal lock after turning on the switched key while using the PARKING function, but the valet will only have 10 minutes to park the vehicle. If this time expires while the vehicle is still moving, the FAST MAX will begin to progressively lock until the vehicle's acceleration is completely removed if the presence of the MAGIC KEY is not detected. If this happens, only detecting the presence of the Magic Key will unlock the vehicle. It is important to note that this time will always be renewed (reset) if the vehicle is turned off before the end of the 10-minute grace period.



You can deactivate the PARKING function manually in two ways:

- 1- We recommend installing our FAST DISPLAY to deactivate the function manually using the same password as the pairing.
- 2- You can also deactivate it using the rescue time function. Turn on the vehicle's switched key without starting the engine, do not move the accelerator pedal until the rescue time programmed in the FAST MAX APP has elapsed. This time can be set via the FAST MAX APP (see 3.12.1).

To avoid the situation where your cell phone is discharged while the PARKING function is activated, we suggest keeping a smartphone charger available in the vehicle.

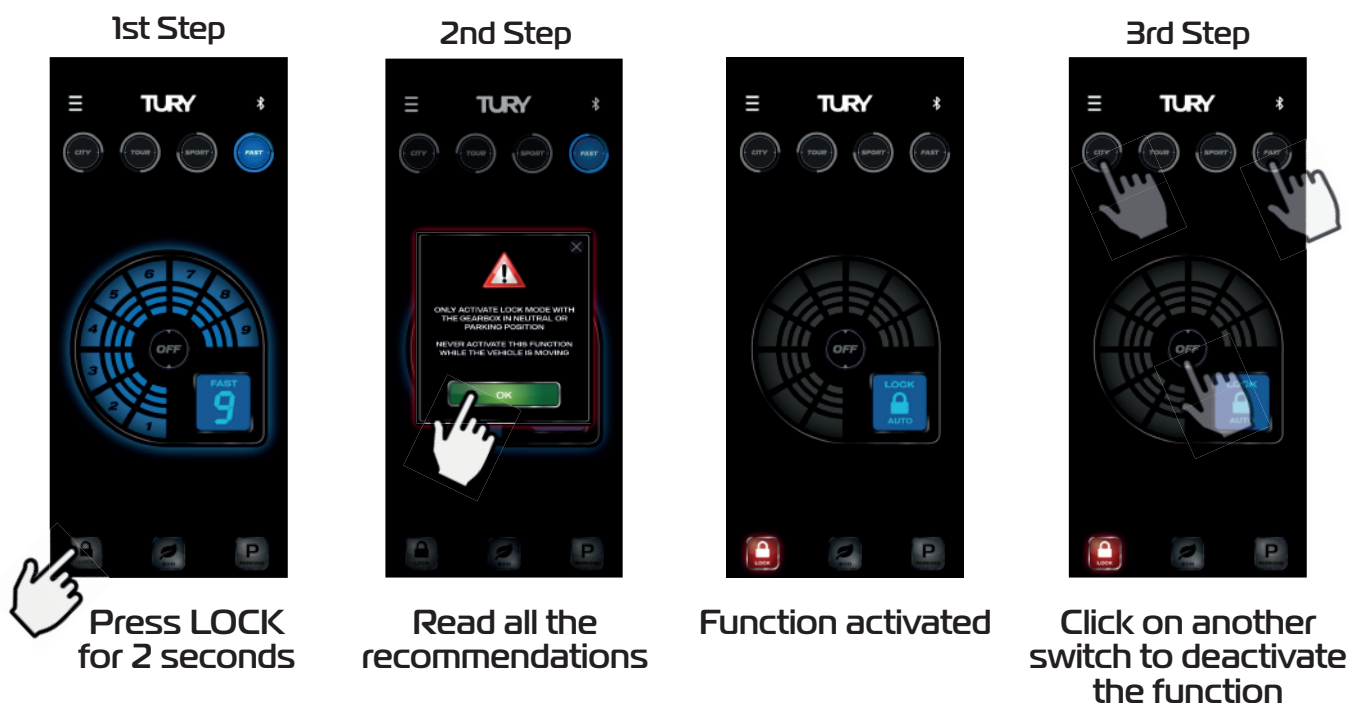
### 3.11 ACTIVATING AND DEACTIVATING THE MANUAL LOCK FUNCTION

This function is an anti-theft protection for the vehicle which, once activated, will block the operation of the electronic accelerator. To activate the function, simply hold down the LOCK switch on the application for 2 seconds and then confirm by pressing OK (two-level activation for security). To remove the pedal lock, simply open the app and connect the smartphone to the FAST MAX, which will return to the last mode selected automatically or click on any other switch on the main screen if it is connected. Suitable for use whenever you park your vehicle on public roads and never activate this function while the vehicle is in motion.



To activate the LOCK function manually, follow the procedures below:

- 1º Open the FAST MAX APP and on the main screen press the (LOCK) key for 2 seconds;
- 2º Read all the recommendations and warnings, click on "OK" to close and the function will be activated.
- 3º If the manual LOCK function has been activated, to unlock simply open the FAST MAX APP and it will return to the last mode selected automatically or click on any other switch on the main screen.



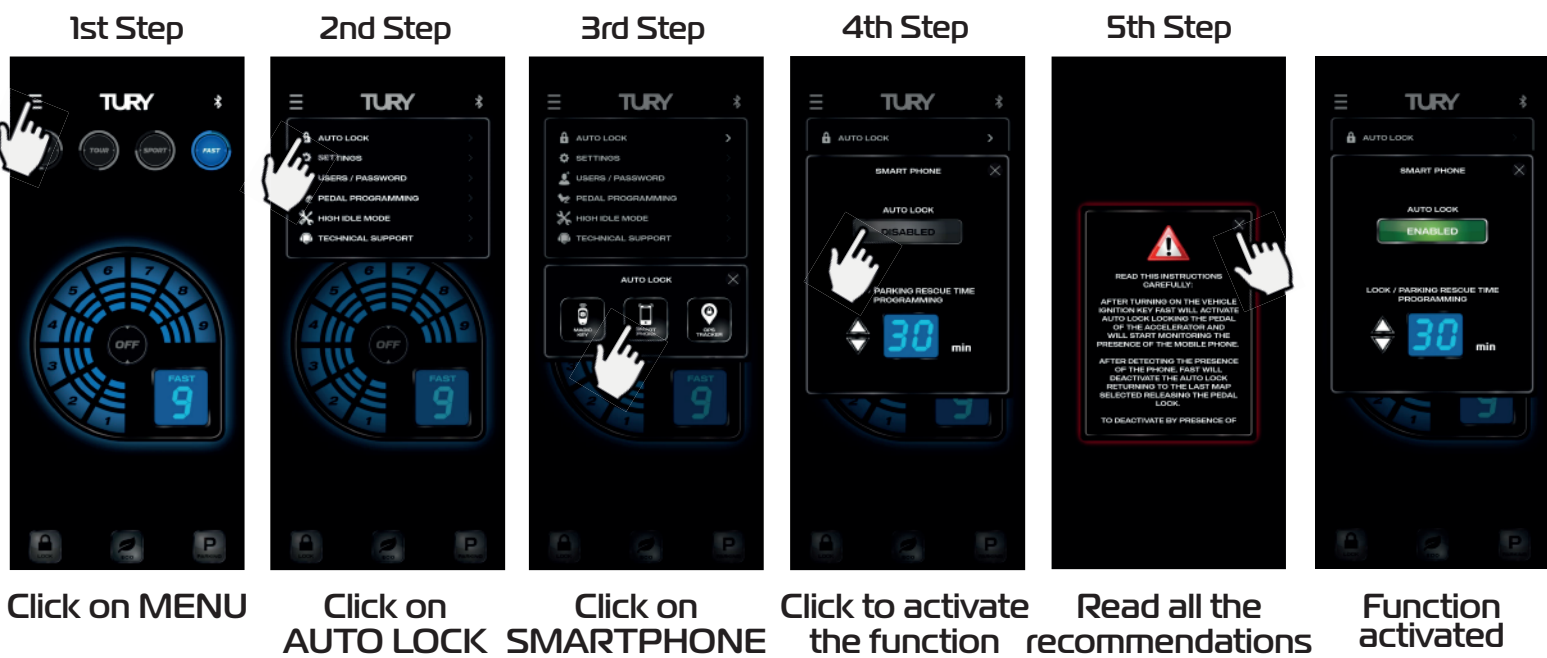
You can deactivate the PARKING function manually in two ways:

- 1- We recommend installing our FAST DISPLAY to deactivate the function manually using the same password as the pairing.
- 2- You can also deactivate it using the rescue time function. Turn on the vehicle's switched key without starting the engine, do not move the accelerator pedal until the rescue time programmed in the FAST MAX APP has elapsed. This time can be set via the FAST MAX APP (see 3.12.1). To avoid the situation where your cell phone is discharged while the PARKING function is activated, we suggest keeping a smartphone charger available in the vehicle.

## 3.12 AUTO LOCK - SMARTPHONE

Function designed to enable automatic locking and unlocking of the vehicle's accelerator pedal, guaranteeing anti-theft protection. Once the Smartphone AUTO LOCK function has been activated in the app, every time the vehicle is started FAST MAX will activate the automatic pedal lock and will search for the presence of paired Smartphones. Once it locates the presence of a registered smartphone, the pedal will be unlocked immediately. If it doesn't locate the presence of a smartphone, the vehicle's acceleration will remain fully blocked and LOCK mode will be activated. On Android systems, automatic unlocking is carried out while the app is running in the background or closed. On the iOS system, automatic unlocking is only carried out when the app is open in the background. If the app is selected in the foreground, the pedal will also unlock automatically. After turning on the vehicle's switched key and unlocking the pedal, it will no longer lock in the switched key cycle, even if the smartphone's battery runs out. On the Apple line, the iOS operating system tends to close and deactivate the FAST MAX APP automatically even when it is running in the background due to battery management issues, and in these cases it will be necessary to click to open the application again for the FAST MAX APP and the function to work again. On some smartphones, when they are turned off, you will need to turn the Bluetooth module off and on for the AUTO LOCK footswitch deactivation function to work again. This function is located in the application under MENU/AUTO LOCK/SMARTPHONE and to activate follow the procedures below:

- 1º Open the FAST MAX APP and on the main screen press the MENU switch on the top left-hand side;
- 2º Choose the AUTO LOCK option;
- 3º Select the SMARTPHONE option;
- 4º Click on the DISABLED switch to activate the AUTO LOCK function and click on the ENABLED switch to deactivate it;
- 5º Read all the recommendations and warnings, click on the "X" to close and the function will be activated.



In certain vehicles, after turning off the switched key, the vehicle's original system will maintain the power supply to the pedal for a few seconds to minutes until the power supply drops. If the user returns to the vehicle before the pedal power is switched off, the AUTO LOCK system will not be able to activate the pedal lock in this case, the pedal lock is only activated after a new switched key cycle.

On the Apple line, the iOS operating system tends to close and deactivate the FAST MAX APP automatically even when it's in the background for battery management reasons, and in these cases you'll need to click to open the application again for the FAST MAX APP and the function to work again.

The rescue time has been developed to allow you to exit LOCK and PARKING modes without using the FAST MAX APP in the event that your smartphone is lost or broken. To activate the rescue function, simply turn on the switched key and wait for the set time without touching the accelerator pedal. After the time programmed in the App has elapsed, the product will unlock the pedal and exit LOCK or PARKING mode, returning to the ORIGINAL acceleration mode. If any acceleration occurs within the rescue time window, this function will be deactivated in this switched key cycle. If the AUTO LOCK SMARTPHONE or MAGIC KEY functions are activated, the LOCK mode will only be deactivated for this rescue cycle, returning to AUTO LOCK if the vehicle is switched off and on again. You can set the rescue time from 1 to 60 minutes according to the procedure below:



Setting the rescue time



You can deactivate the LOCK and PARKING function manually in two ways:

- 1- We recommend installing our FAST DISPLAY to deactivate the function manually using the same password as the pairing.
- 2- You can also deactivate it using the rescue time function. Turn on the vehicle's switched key without starting the engine, do not move the accelerator pedal until the rescue time programmed in the FAST MAX APP has elapsed. This time can be set via the FAST MAX APP (see 3.12.1).

To avoid the situation where your cell phone is discharged while the PARKING function is activated, we suggest keeping a smartphone charger available in the vehicle.

### 3.13 AUTO LOCK - MAGIC KEY (NOT INCLUDED IN THE PRODUCT)



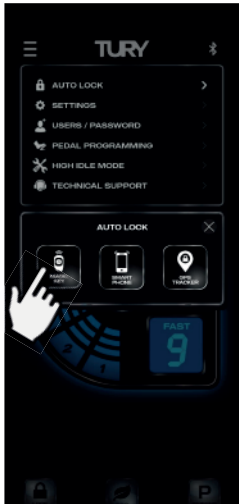

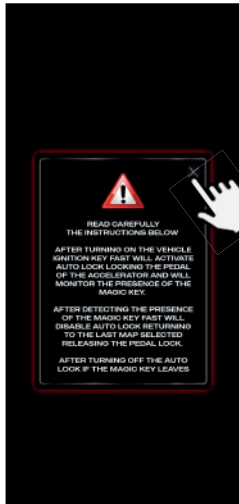
The MAGIC KEY Bluetooth control is not included in the product and, once purchased, registered and activated in the application, is intended to be a presence key in the vehicle's protection system. You can register up to 4 MAGIC KEY's per FAST MAX and it prevents theft, armed robbery or for fleet management security. It operates in exactly the same way as the AUTO LOCK function via Smartphone, with the pedal being locked and unlocked after the vehicle has been started, the only difference being that after the vehicle has been started and the pedal has been unlocked, if the MAGIC KEY is no longer located by FAST MAX, the vehicle will activate the pedal lock according to the MAGIC KEY lock settings. It is possible to set the mode of the start of the lock at the moment of activation: IMMEDIATE or PROGRESSIVE, and also the type of lock: TOTAL (complete pedal lock) or PARTIAL (maintains a minimum acceleration on the pedal).

The time for activating the start of the progressive or immediate lockout can be programmed from 1 to 20 minutes. After the programmed time has elapsed, the configured lockout protocol starts, where the immediate lockout system will lock the pedal immediately and the progressive lockout system will start with a 50% acceleration limitation and every 10 seconds it will reduce by 10% until the progressive lockout protocol ends, which can be TOTAL or PARTIAL depending on the configuration. Detection of the presence of the Magic Key control by FAST MAX is only possible with the FAST MAX APP in the background or closed (disconnected from the module), with the product paired in the foreground and the Magic Key will not be blocked.

You can configure and enable the permission to deactivate the AUTO LOCK function via Smartphone by accessing the FAST MAX APP and using the registered pairing password (we recommend changing the original pairing password for security reasons - see page 9).

If you choose to buy the Magic Key, read its installation manual for more details. This function is located in the application under MENU/AUTO LOCK/MAGIC KEY and is part of TURVY's international patent application. The following is an example of activating the Auto Lock - Magic Key function, registering the controls and setting the time for activating the progressive lock by distance:

- 1º Open the FAST MAX APP and on the main screen press the MENU key at the top left;
- 2º Choose the AUTO LOCK option;
- 3º Select the MAGIC KEY option;
- 4º Click on the DISABLED switch to activate the function;
- 5º Read all the recommendations and warnings, click on the "X" to close and the function will be activated.

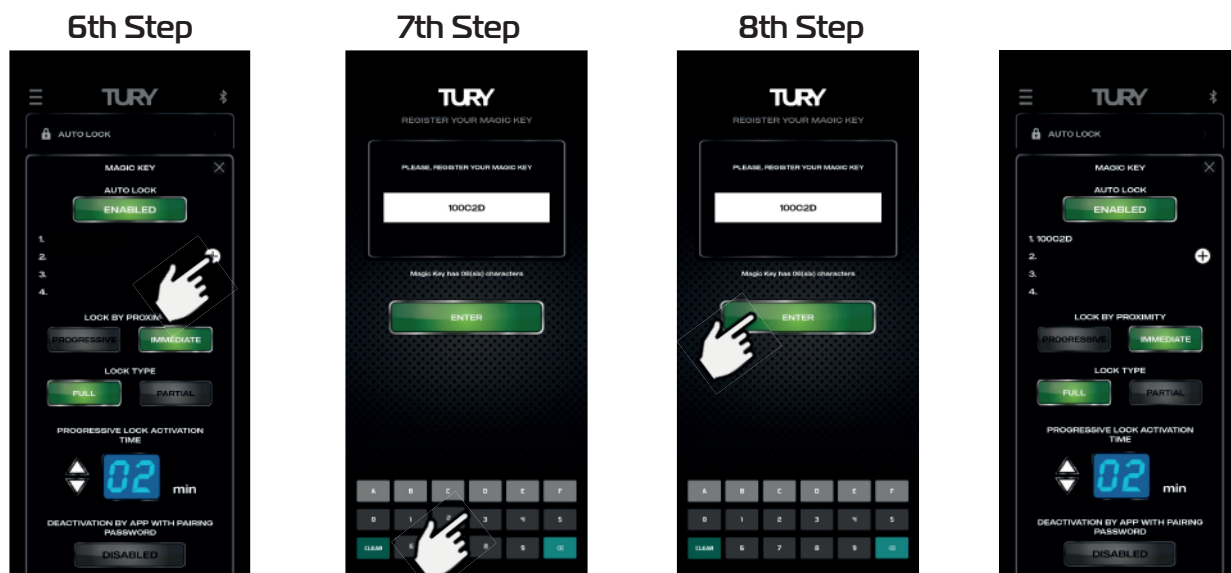
 <p>1st Step</p>	 <p>2nd Step</p>	 <p>3rd Step</p>	 <p>4th Step</p>	 <p>5th Step</p>
Click on MENU	Click on AUTO LOCK	Click on MAGIC KEY	Click on DISABLED to activate the function	Read all the recommendations



Detection of the presence of the Magic Key control by FAST MAX is only possible with the FAST MAX APP in the background or closed (disconnected from the module), with the paired product in the foreground and the Magic Key will not be identified. Whenever the AUTO LOCK function of the MAGIC KEY is activated and the FAST MAX APP is placed in the background, the module will automatically disconnect from the App in order to identify the presence of the Magic Key control and guarantee the security functions.



- 6º Click on the "+" switch to register a new Magic Key control;
- 7º Enter the 6-digit code located on the back of the controller as shown below (and click OK on iOS only);
- 8º Click ENTER to confirm registration;



Click on the + switch

Enter the 6-digit ID (Click OK on iOS)

Click the ENTER switch

Magic Key registered

MAGIC KEY back



MAGIC KEY ID code

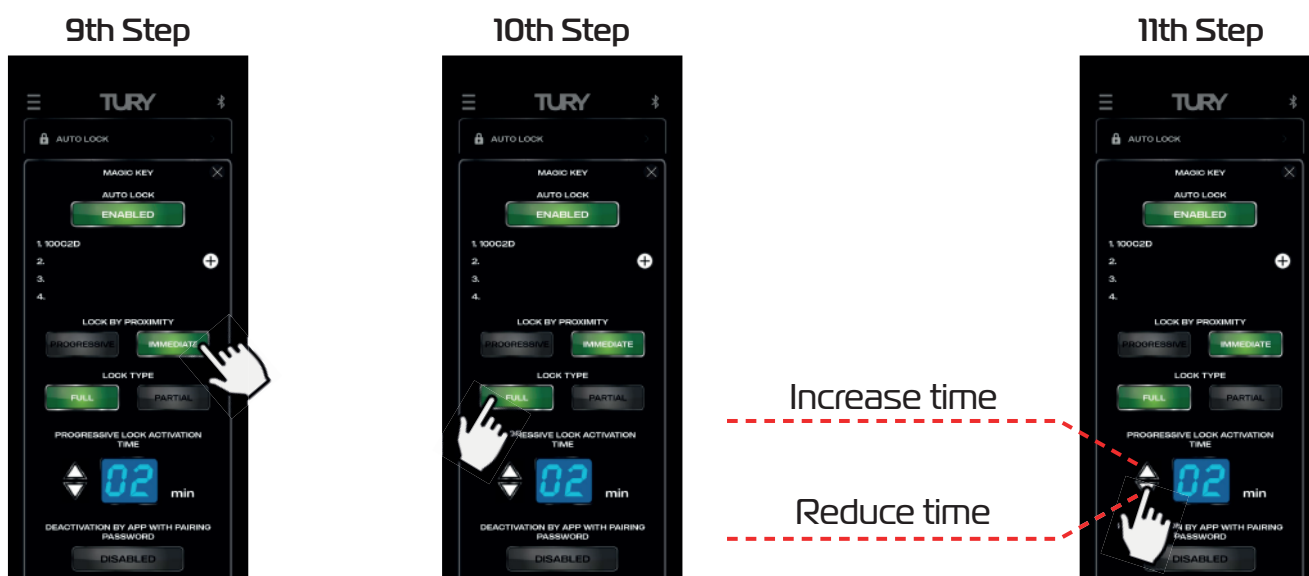
9º Configure the locking mode by absence: PROGRESSIVE locking (starts locking after the time set see Step 11) or IMMEDIATE locking (starts locking immediately);

10º Set the type of locking: TOTAL locking (complete locking of the pedal) or PARTIAL locking (maintains a minimum acceleration on the pedal);

It is possible to set the time to start the locking by PROGRESSIVE or IMMEDIATE removal, which comes with a factory default of 2 minutes and can be set from 1 to 20 minutes.

To set the time for activating the time-off lock, simply follow the steps below:

- 11º Set the time to start the remote lock by clicking up or down;



Choose the distancing locking mode

Choose the type of lock

Set the time of the distancing locking

There are two ways to unlock AUTO LOCK via MAGIC KEY on the Smartphone-FAST MAX APP: without using the pairing password or using the 4-digit pairing password for added security, which is activated at the factory.

If this deactivation function with the pairing password is deactivated, when you access the FAST MAX APP it will automatically unlock the pedal and return you to the last mode used.

If this deactivation function with pairing password is activated, when you access the FAST MAX APP and if you have not located the MAGIC KEY control for at least 6 seconds, the pairing password will be requested to unlock the pedal.

To configure and enable the AUTO LOCK deactivation function via the FAST MAX APP with the pairing password, simply follow the steps below (we recommend changing the original pairing password for safety - see item 3.5):

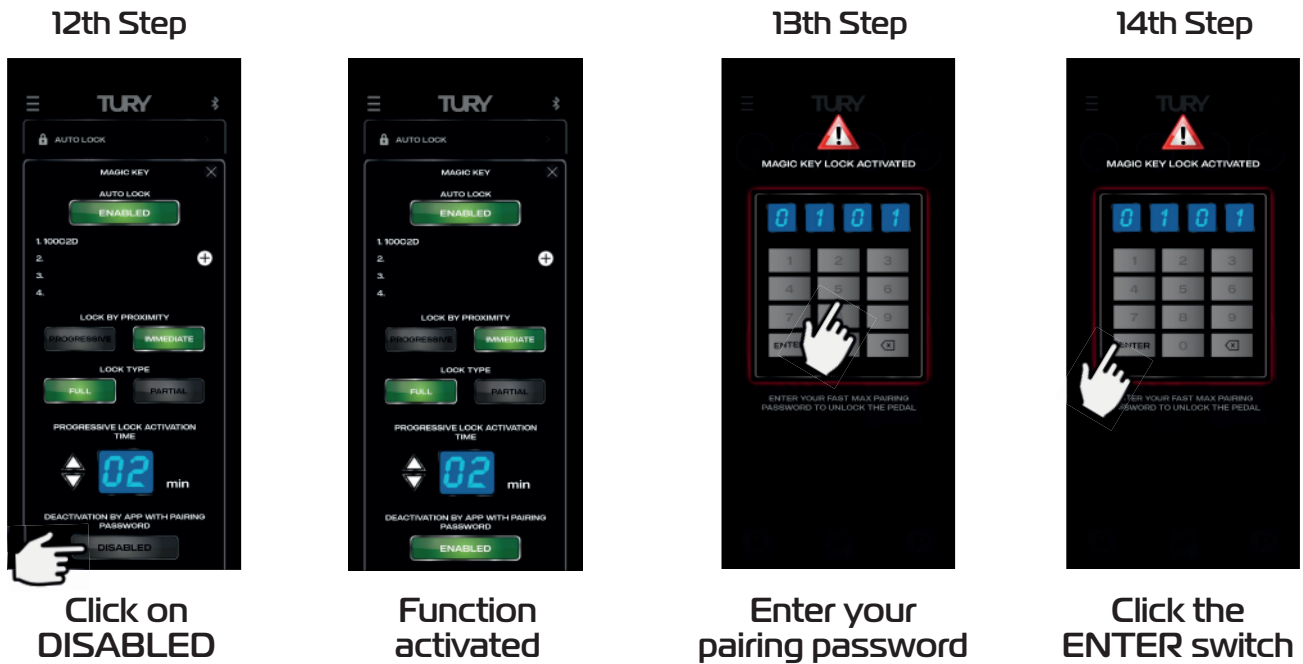
12º Click on the DISABLED switch under "deactivation by app with pairing password";

After activating LOCK or during the lock-out phase, if unlocking by password is activated, you will need to enter the pairing password when you open the FAST MAX APP.

13º Turn the vehicle off and on to restart FAST MAX, open FAST MAX APP and enter the pairing password to unlock the pedal;

14º Click ENTER to confirm unlocking the pedal and accessing the FAST MAX APP.

**Note: If you enter an incorrect password, there are only 3 attempts to enter the correct password and unlock the pedal.**



### 3.14 AUTO LOCK - GPS TRACKER - ALARM - BLOCKER

This function is designed for situations in which you want to externally lock the electronic accelerator via a GPS Tracker, alarms or vehicle immobilizer. Once the GPS Tracker's AUTO LOCK function has been activated in the application and the locking has been carried out by the tracker, the progressive locking system, as described above for the Magic Key, will be activated immediately.

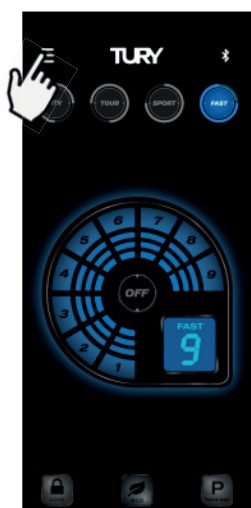
It is possible to set the mode in which the locking starts at the moment of activation: IMMEDIATE or PROGRESSIVE, as well as the type of locking: TOTAL (complete locking of the pedal) or PARTIAL (maintains a minimum acceleration on the pedal). After activation, the immediate locking system will lock the pedal immediately and the progressive locking system will start with an acceleration limitation of 50% and every 10 seconds it will reduce by 10% until after 1 minute the acceleration will be completely locked.

It is possible to configure and enable the permission to deactivate the AUTO LOCK function via Smartphone by accessing the FAST MAX APP and using the registered pairing password (we recommend changing the original pairing password for security - see item 3.5). Compatible with any GPS tracker or alarms on the global market, it accepts various types of activation/deactivation commands (fixed negative, single or double pulse negative). FAST MAX has a specific type of special pulse for OEM applications only, in which case the tracker must have this protocol on the lock signal output. TURY, the manufacturer of FAST MAX, has partnerships with most of the world's major vehicle tracking companies and supplies this electronic communication protocol only to tracker manufacturers. When activated, this function is a priority for the user of the vehicle, because in cases of theft or robbery only the tracker itself can unlock the vehicle, but there is the possibility of configuring in the application that this unlocking is also possible via smartphones paired to the FAST MAX. This function is located in the application under MENU/AUTO LOCK/GPS TRACKER and is part of TURY's international patent application.

Follow the steps below to activate the Auto Lock - GPS Tracker function:

- 1º On the main screen, press the MENU switch on the top left-hand side;
- 2º Choose the AUTO LOCK option;
- 3º Select the GPS TRACKER option;
- 4º Click on the DISABLED switch to activate the function;

#### 1st Step



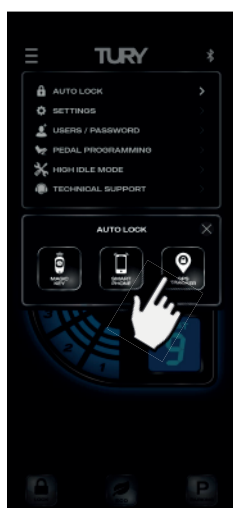
Click on MENU

#### 2nd Step



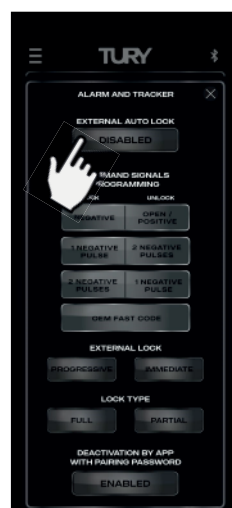
Click on AUTO LOCK

#### 3rd step

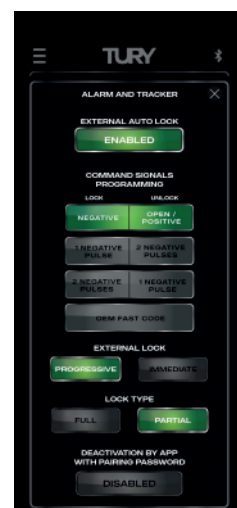


Click on GPS TRACKER

#### 4th Step



Click to activate the function



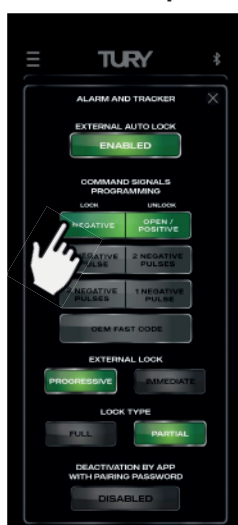
Function activated

5º Configure the type of output signal from the GPS tracker central, alarm or locking device to activate/deactivate of the external locking.

6º Configure the external locking: progressive locking (starts locking after the pre-set time) or immediate locking (starts locking immediately - more commonly used in alarm and locking applications);

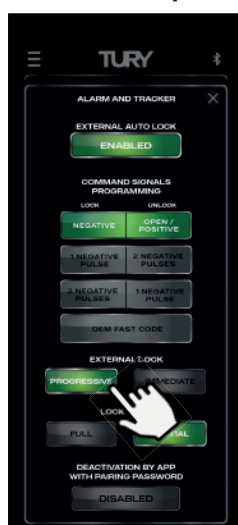
7º Set the type of locking: total locking (complete locking of the pedal) or partial (maintains a minimum acceleration on the pedal);

#### 5th Step



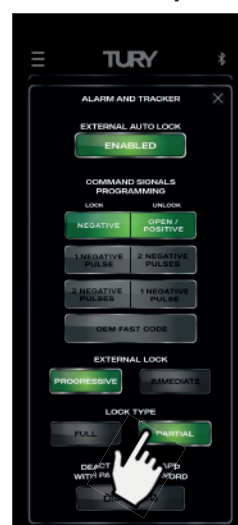
Select the type of signal to activate/deactivate

#### 6th Step



Choose the external locking

#### 7th Step



Choose the type of locking

There are two ways to unlock the AUTO LOCK via GPS TRACKER from the Smartphone-FAST MAX APP: without using the pairing password or using the pairing password (more security).

If this deactivation function with the pairing password is deactivated, when you access the FAST MAX APP it will automatically unlock the pedal, returning you to the last mode used.

To configure and enable the AUTO LOCK deactivation function via the FAST MAX APP with a pairing password, simply follow the steps below (we recommend changing the original pairing password for security - see item 3.5). :

8º Click on the DISABLE switch under "deactivation by app with pairing password";

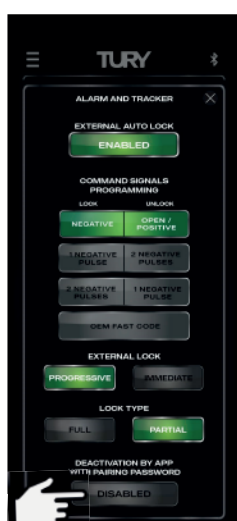
After activating LOCK or during the lock-out phase, if unlocking by password is activated, you will need to enter the pairing password when you open the FAST MAX APP.

9º Turn the vehicle off and on to restart FAST MAX, open FAST MAX APP and enter the pairing password to unlock the pedal;

10º Click ENTER to confirm unlocking the pedal and accessing the FAST MAX APP;

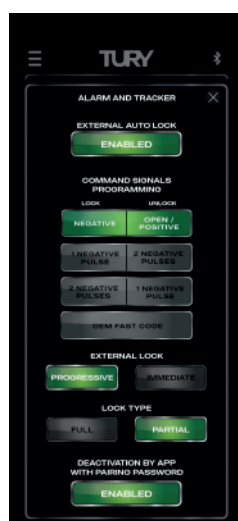
**Note: If you enter an incorrect password, there are only 3 attempts to enter the correct password and unlock the pedal.**

#### 8th Step



Click on DISABLED

#### 9th Step



Function activated

#### 9th Step



Enter your pairing password

#### 10th Step



Click the ENTER switch



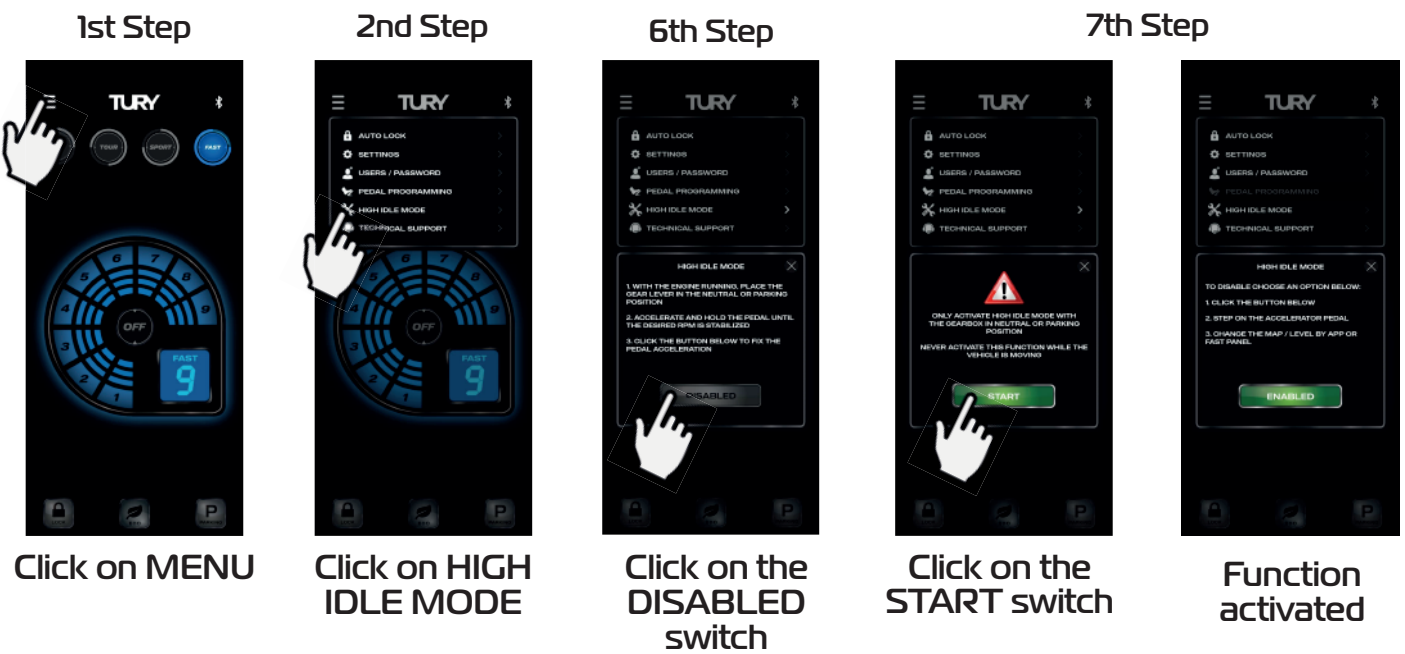
## 3.15 HIGH IDLE MODE

This function has been developed for professional mechanics who want to keep the vehicle at a fixed acceleration in order to keep the RPM constant for specific maintenance services that require this procedure, without the need for someone to hold down the accelerator pedal. To activate this function in the application, go to MENU/HIGH IDLE MODE, accelerate the pedal until it reaches the desired RPM, click on the DISABLED switch and then click on the START switch (two-level activation for safety).

At this point you can remove your foot from the pedal and the acceleration will be maintained at the programmed point.

There are three ways to deactivate this function: click on the ENABLED switch, step on the accelerator pedal or click on any map or level. To activate this function, follow the steps below:

- 1º Open the FAST MAX APP and on the main screen press the MENU key at the top left;
- 2º Click on HIGH IDLE MODE;
- 3º Place the gearshift in the Neutral or Parking position;
- 4º Start the vehicle and keep it running with the engine running;
- 5º Press the accelerator pedal until you reach the desired RPM and keep the pedal pressed at this level;
- 6º Click on the DISABLED switch;
- 7º Click on the START switch to activate the function and you can release your foot from the accelerator.



There are 3 ways to deactivate this function:

- Stepping on the accelerator pedal at any time;
- Changing the map/level in the FAST MAX APP or via the FAST DISPLAY;
- By clicking on the "ENABLED" switch in the FAST MAX APP application on the same screen as this function.

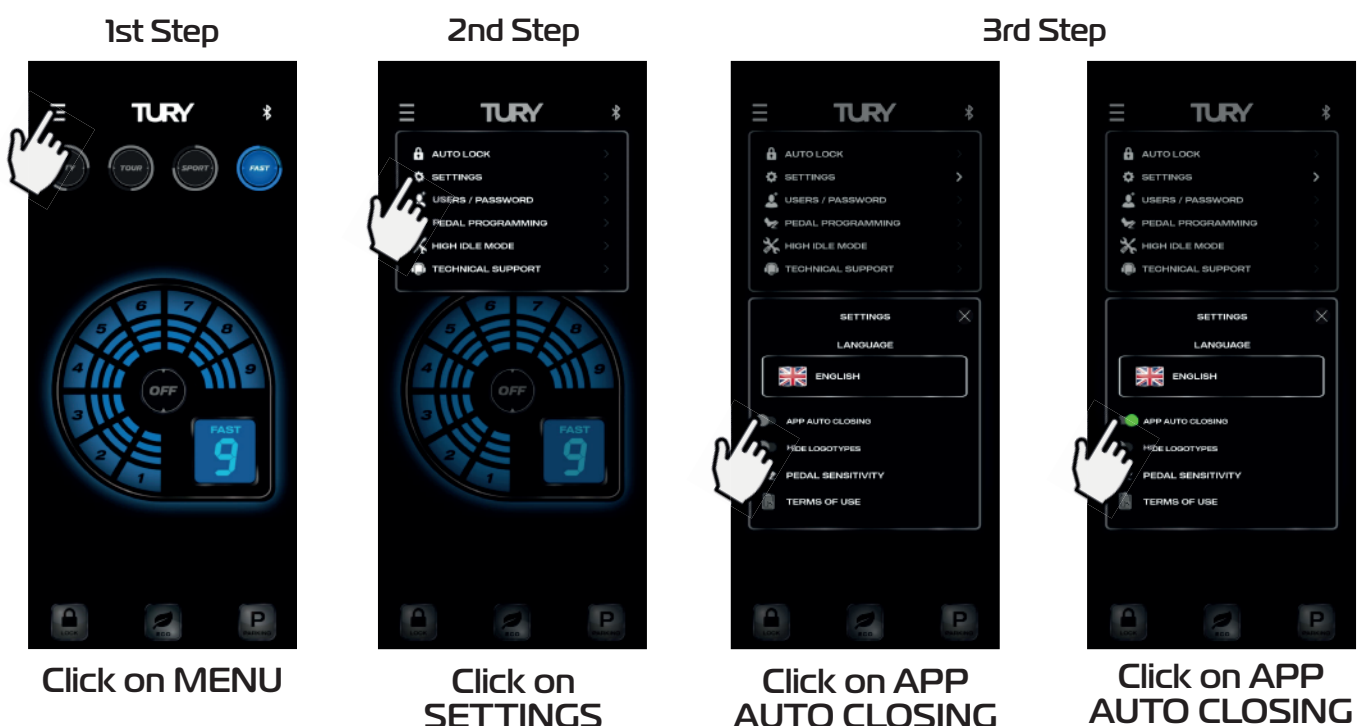


Only activate the high idle mode with the gearshift in Neutral or Parking. Never activate this function while the vehicle is moving.

## 3.16 AUTOMATIC CLOSING OF THE FAST MAX APP

You can control the automatic closing of the FAST MAX APP if the automatic screen lock function is activated on your smartphone. To activate or deactivate this function, follow the procedures below:

- 1º Open FAST MAX APP and on the main screen press the MENU switch at the top left;
- 2º Click on SETTINGS;
- 3º Click on the APP AUTO CLOSING switch to activate the function and the same to deactivate it.



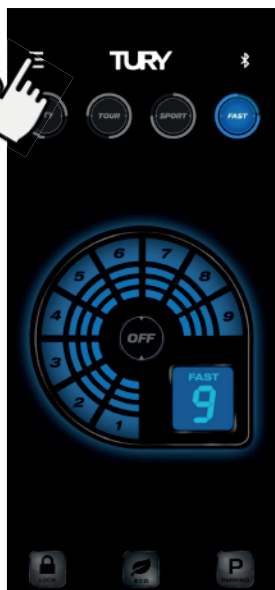


## 3.17 LANGUAGE SELECTION

To select the FAST MAX APP LANGUAGE, follow the procedures below:

- 1º Open FAST MAX APP and on the main screen press the MENU switch on the top left-hand side;
- 2º Click on SETTINGS;
- 3º Click on the current language;
- 4º Scroll up or down to the language you want and click CONTINUE.

1st Step



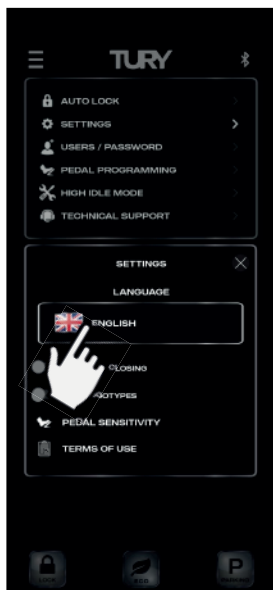
Click on MENU

2nd Step



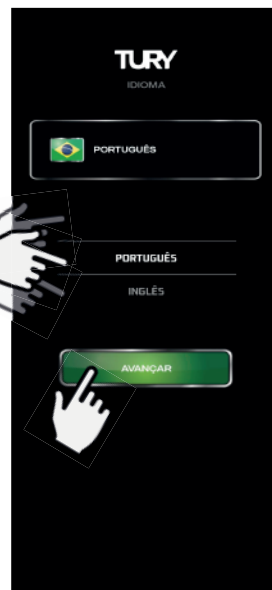
Click on SETTINGS

3rd Step



Click on the current language

4th Step



Scroll down to the language and click CONTINUE



Language changed

## 3.18 HIDE LOGOS

The possibility of hiding the TURY brand logos in the FAST MAX APP has been developed, making it possible to present the product to specific customers as an original vehicle brand accessory.

- 1º Open the FAST MAX APP and on the main screen press the MENU switch at the top left;
- 2º Click on SETTINGS;
- 3º Click on HIDE LOGOTYPES to activate the function and the same to deactivate it.

1st Step



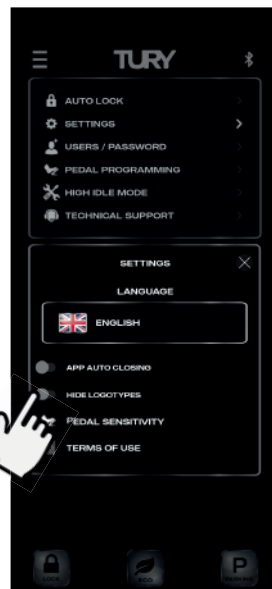
Click on MENU

2nd Step

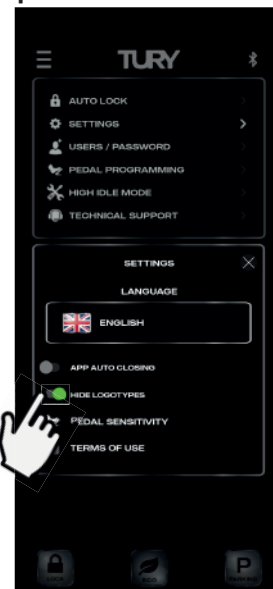


Click on SETTINGS

3rd Step



Click on HIDE LOGOTYPES



Click on HIDE LOGOTYPES

## 4. SECURITY

### 4.1 TECHNOLOGY

- The FAST MAX module uses Bluetooth 5.2 technology.
- This product is free from electromagnetic interference and can be used anywhere.
- It does not suffer from radiation or generate radiation that affects human health or other equipment.
- When the application is placed in the background of your Smartphone (rest), it runs in the background.

Even in this condition there is communication with the FAST MAX and the app continues to perform any task to ensure safety and also to guarantee that the FAST MAX APP does not drain your smartphone's battery.

- It comes with a 2-year guarantee against manufacturing defects, according to the certificate attached.
- To prevent accidents and traffic fines, never use the application while driving.

*This equipment does not have the right to protection against harmful interference and may not cause interference to duly authorized systems.*



## 5. VALIDATION

**1º FAST FUNCTION** - Select an acceleration map and adjust the level to notice the difference in acceleration response.

**2º ECO FUNCTION** - When the vehicle is running, activate the function and check for a loss of power when accelerating the vehicle below the original power (economy).

**3º MANUAL LOCK FUNCTION** - With the function activated, start the vehicle and check that the accelerator is inactive.

**4º SMARTPHONE AUTO LOCK FUNCTION** - With the function activated, start the vehicle and check that the accelerator is inactive with the Smartphone switched off or away from the vehicle.

**5º PARKING FUNCTION** - With the function activated, check for loss of power when accelerating the vehicle by varying the acceleration limits.

**6º HIGH IDLE MODE FUNCTION** - With the vehicle running, accelerate to the desired point, activate the function in the FAST MAX APP and release your foot from the accelerator, checking that the acceleration remains constant.

## 5.1 TROUBLESHOOT

SYMPTOM	POSSIBLE CAUSE	SOLUTION
Connector difficult to fit.	Product malfunction	Check that the connection is correct, that the terminals are not bent or loose, check that the connector lock is fully locked.
Product does not work and malfunction lights up on the dashboard.	Disconnected the original harness with the accelerator pedal still energized, failure to connect the electrical harness, harness with the wrong application for the vehicle model.	Check that the harness is connected correctly and that there are no pins with bent terminals in the connectors or out of place. In many vehicles, switching the engine off and on will sometimes cause the fault light to go out automatically. You may need an automotive scanner compatible with your vehicle.
Car accelerates on its own when started in LOCK mode	Pedal programming not carried out	Perform accelerator pedal programming (see 3.4)
Loss or limitation of acceleration after installing FAST MAX	Faulty electrical harness connection, harness with the wrong application for the vehicle model, interference caused by a radio transmitter with very high power near the product.	Check that the harness is connected correctly and that there are no pins with bent terminals in the connectors or out of place. When you turn the engine off and on, this effect may disappear. Check that PARKING mode is activated with acceleration limitation.
FAST MAX APP fails to connect to the FAST MAX module	Bluetooth turned off,  Smartphone location system ANDROID deactivated and without permission,  you did not carry out the pairing procedure correctly (see 3.3).	Turn on the smartphone's Bluetooth,  On Android, allow and enable smartphone location,  Try pairing again, following the procedure indicated in the videos.
Cannot complete accelerator pedal programming	Faulty electrical harness connection, harness with the wrong application for the vehicle model.	Check that the harness is connected correctly and that there are no bent or misplaced pins in the connectors.



If you have not been able to complete the installation successfully and have any questions or difficulties, please contact our technical support.

Just click on the WhatsApp icon on the side and you will be assisted or:



**Click to chat**

**USA:**

Phone: (844) 590-2233

E-mail: tury@hki-usa.com

Time: Monday to Friday from 9:00am to 5:00pm (EDT)

**Other Countries:**

Phone: +55(11) 4127-3027

WhatsApp: +55(11) 95618-4967

E-mail: suporte@tury.com.br

Time: Monday to Thursday from 7:30am to 6:00pm

Friday from 7:30am to 5:30pm

Saturday from 8:00am to 1:00pm (Brazilian Time Zone)



- We recommend always using solder and insulating tape on electrical cable splices;
- Always pass and fix the TURY harness together with the vehicle's original electrical harness, covering the module and TURY harness with foam to avoid noise;
- Make sure that the end position of the TURY electronic module is protected from water. (insul-film, rain or during cleaning);
- The colors of the original vehicle wires and their functions and locations as indicated in this manual may vary. Therefore, before performing any wire installations without TURY harness connectors, we recommend the use of appropriate measuring instruments to confirm these signals. The use of test leads, test lamps and other methods can cause serious damage to the vehicle's electrical and electronic system, use a voltmeter or multimeter.  
TURY is not responsible for damage to the vehicle's electrical system caused by faulty installation;
- Always before you define that the module is defective, contact our technical support because we can still help and solve the installation.

## GET TO KNOW OUR SOCIAL NETWORKS

