



HOW TO USE THIS INSTALL GUIDE

- 1** Open the Bookmarks menu and find your vehicle OR scroll down until you find the install guide for your vehicle.
- 2** Print only the pages for your vehicle using the advanced options in the Print menu.
- 3** Install your Maestro RR according to the guide for your vehicle.

WARNING

Pressing the printer icon or "quick printing" this document will print all of the guides in this compilation.

RETAINS STEERING WHEEL CONTROLS, VEHICLE SETTINGS, AND MORE!



PRODUCTS REQUIRED

iDataLink Maestro RR Radio Replacement Interface
iDataLink Maestro CHK1 Dash Kit

PROGRAMMED FIRMWARE

ADS-RR(SR)-CHR03M-DS

ADDITIONAL RESOURCES

[Maestro RR2 Programmable Outputs Guide](#)

OPTIONAL ACCESSORIES

K40[™]
ELECTRONICS
ESCORT

ACC-SP1

Click here for:
[Radar Installation Guides](#)


WELCOME

Congratulations on the purchase of your iDatalink Maestro RR Radio replacement solution. You are now a few simple steps away from enjoying your new car radio with enhanced features.

Before starting your installation, please ensure that your iDatalink Maestro module is programmed with the correct firmware for your vehicle and that you carefully review the install guide.

Please note that Maestro RR will only retain functionalities that were originally available in the vehicle.

NEED HELP?

 1 866 427-2999

 maestro.support@idatalink.com

 maestro.idatalink.com/support
www.12voltdata.com/forum

TABLE OF CONTENTS

Installation Instructions	3
Wiring Diagram	6
Radio Wire Reference Chart	7
Troubleshooting Table	8

INSTALLATION INSTRUCTIONS

FACTORY RADIO DISASSEMBLY / DASH KIT ASSEMBLY

STEP 1

- Pry out the climate panel to expose the two (2) screws that hold in the radio bezel. Disconnect the climate panel harness and put to the side. (Fig. 1.1, 1.2)

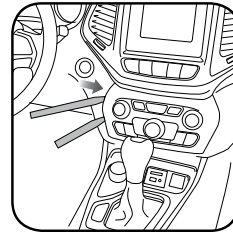


Fig. 1.1

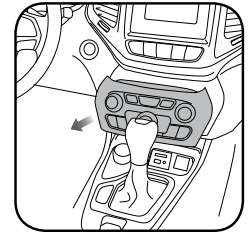


Fig. 1.2

STEP 2

- Remove the two (2) screws and remove the radio bezel. (Fig. 1.3)

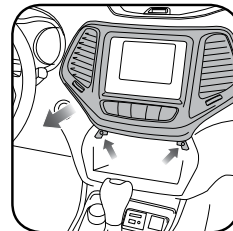


Fig. 1.3

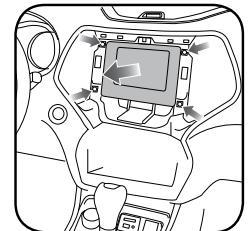


Fig. 1.4

STEP 3

- Remove the four (4) 7mm bolts securing the radio, then remove and disconnect the factory radio. (Fig. 1.4)

STEP 4

Remove the two (2) 7mm bolts visible from the front. Then, using a short screwdriver, remove the 2 screws located behind the metal bracket. (Fig. 1.5)

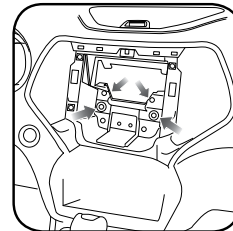


Fig. 1.5

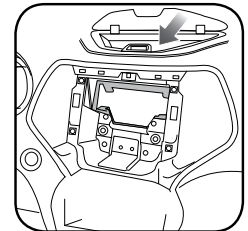


Fig. 1.6

STEP 5

Open the storage compartment located in the top center of the dash. Remove the rubber mat, then remove the screw. Now, remove the metal bracket from the radio cavity. (Fig. 1.6)

STEP 6

- Using a utility knife, remove the plastic in the shaded areas. (Fig. 1.7)

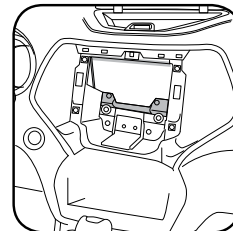


Fig. 1.7

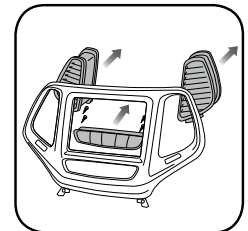


Fig. 1.8

STEP 7

- Transfer the air vents and the hazard button from the factory radio bezel to the aftermarket. If the vehicle is a model that does not have the hazard button bar on the radio bezel, use the blank provided with the kit to fill the space. (Fig. 1.8)

STEP 8

- Attach the provided metal brackets to the new radio. (Fig. 1.9)

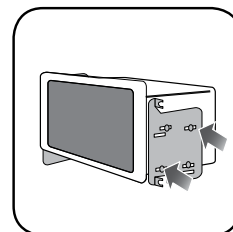


Fig. 1.9

INSTALLATION INSTRUCTIONS

FACTORY RADIO DISASSEMBLY / DASH KIT ASSEMBLY

STEP 9

- At the front of the center console, pry off the plastic cover. (Fig. 2.1)

STEP 10

- Using a plastic pry tool, lift and detach the center console cover to expose the media port at the front. (Fig. 2.2)

STEP 11

- Depress the tabs and remove the media port from the center console cover. (Fig. 2.3)

STEP 12

- Depress the tabs and remove the media hub from the cover. (Fig. 2.4) Unplug all connectors. Then, put the CHK1 replacement media hub in the front cover and reinstall the media port into the center console.

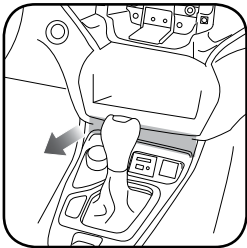


Fig. 2.1

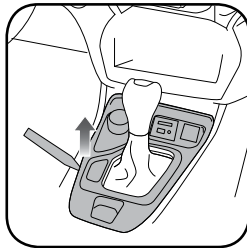


Fig. 2.2

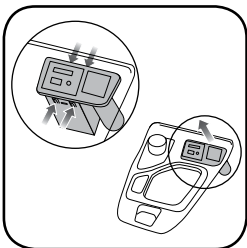


Fig. 2.3

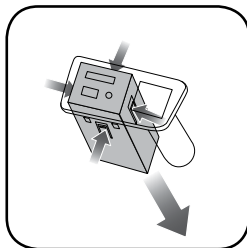


Fig. 2.4

Note: Assembly of the radio and USB port is the opposite of the disassembly instructions.

MAKE CONNECTIONS

STEP 13

- Plug connectors (J) and (K) to CHK1 media hub as shown.
- Plug connector (L) from rear of vehicle to long USB adapter (included in the kit) then to aftermarket radio.

STEP 14

- Unbox the aftermarket radio and locate its main harness.
- Connect the wires shown on the next page from aftermarket radio main harness to the CHK1 T-harness and match the wire functions.

STEP 15

- Determine if the vehicle has a factory amplifier. Look for badges on the radio, door panels and dash that indicate the presence of an amplifier (ex: Alpine).

If the vehicle DOES NOT have a factory amplifier:

- Plug the female GREEN connector to the male GREEN connector of your CHK1 T-harness.
- Plug the female WHITE connector to the male WHITE connector of your CHK1 T-harness.

If the vehicle DOES have a factory amplifier:

- Plug the female GREEN connector to the male WHITE connector of your CHK1 T-harness.
- Plug the female WHITE connector to the male GREEN connector of your CHK1 T-harness.

STEP 16

- Connect the factory harness to the CHK1 T-harness.

STEP 17

- Plug the aftermarket radio harnesses into the aftermarket radio.
- Plug the Data cable to the data port of the aftermarket radio.

INSTALLATION INSTRUCTIONS

- Insert the Audio cable into the iDatalink 3.5 mm audio jack of the aftermarket radio (If there is no iDatalink audio input, connect to AUX).

Note: On Pioneer radio, ensure that there is nothing plugged into the W/R port.

- Plug mini USB cable to short USB adapter then connect adapter to aftermarket radio.
- Plug long USB adapter to aftermarket radio.

Note: If the vehicle is equipped with parking sensors AND using an Alpine radio: plug Audio cable in auxiliary input of the radio.

STEP 18

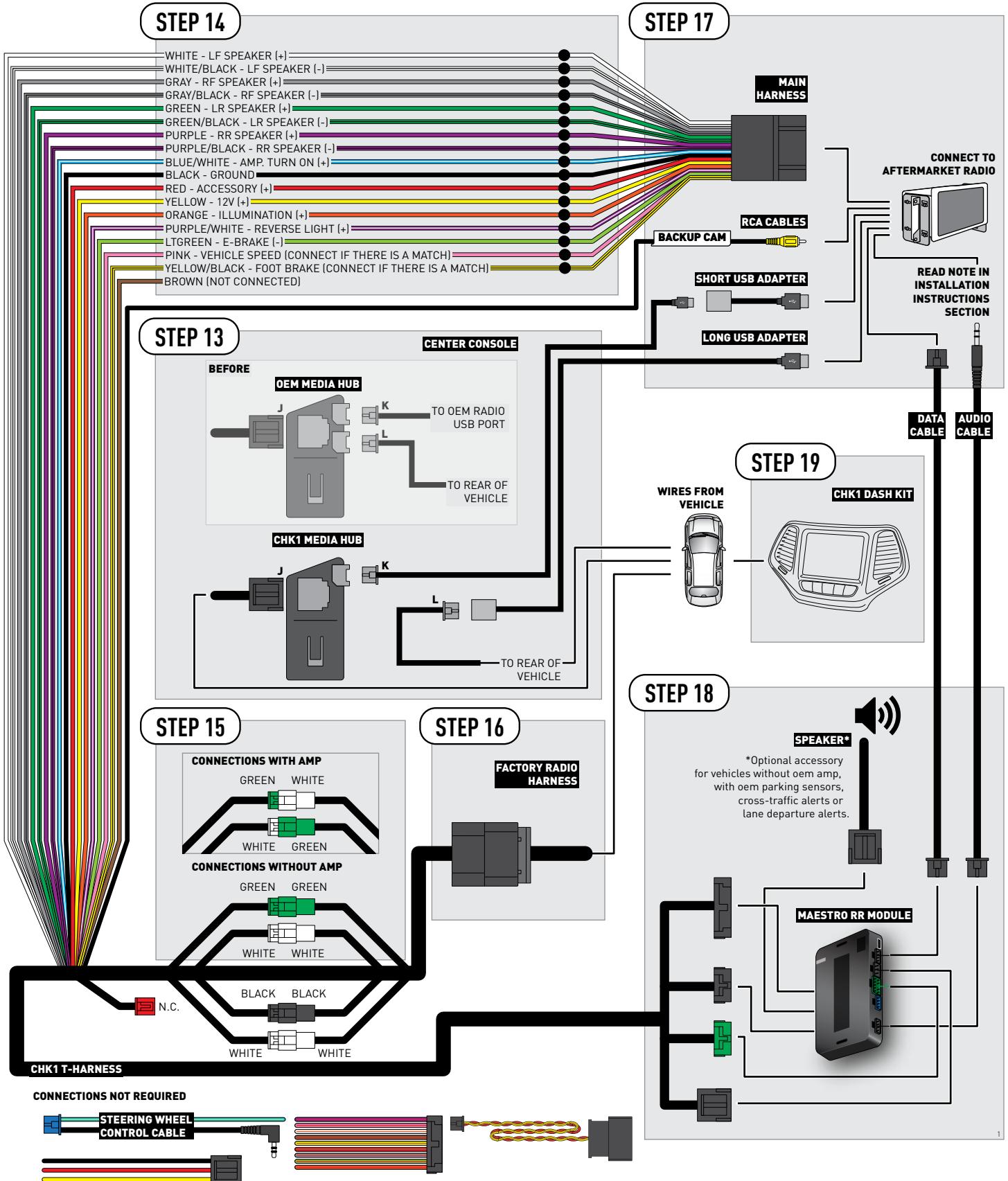
- Connect all the harnesses to the Maestro RR module.
- **If the vehicle is equipped with OEM parking assist, lane departure, or other safety systems, the ACC-SP1 is required: Plug the ACC-SP1 the Maestro RR.**

If you are not using this speaker, the radio will mute when the parking assist is active. If you are using this speaker, the parking assist chimes will play through the external speaker and the radio will not mute unless the settings are changed in the radio.

STEP 19

- Install the CHK1 dash kit and test your installation.

WIRING DIAGRAM



RADIO WIRE REFERENCE CHART

Wire Description	Polarity	Wire Color on Maestro T-Harness	Wire Color on Alpine cable	Wire Color on Kenwood cable	Wire Color on Pioneer cable	Wire Color on Sony cable
Illumination	(+)	Orange	N/A	Orange/White	Orange/White	Orange
Reverse Light	(+)	Purple/White	Orange/White	Purple/White	Purple/White	Purple/White
E-Brake	(-)	Lt Green	Yellow/Blue	Lt Green	Lt Green	Lt Green
Foot Brake	(+)	Yellow/Black	Yellow/Black	N/A	N/A	N/A
VSS (vehicle speed sensor)	(DATA)	Pink	Green/White	Pink	Pink	N/A

TROUBLESHOOTING TABLE

PROBLEM	SOLUTION
Gauges do not work / show up.	Make sure that you selected Gauges during the flash. Reset the RR.
When making a phone call you cannot hear the callers but they can hear you.	If your vehicle has a factory amplifier, make sure that the 4-pin green and white connectors in the harness are plugged in correctly, as stated in step 15.
The radio stays ON or the radio doesn't come ON at all.	Make sure the 2-pin colored connectors in the harness are connected correctly as stated in step 15.
The light on the Maestro is blinking RED TWICE .	Ensure the 4-pin data cable is connected between the radio and the RR, and that it is plugged into the black port on the Maestro RR. The red and blue ports on the RR should be empty. Make sure the correct radio model and serial number were entered during the flash. Verify the radio's serial number entered during the flash matches what is listed on the radio screen. This can be found in the settings of the radio, listed as Device Id, Device Number, or Serial Number.
The light on the Maestro is flashing RED ONCE .	There is no firmware on the module; flash the RR module.

MAESTRO RR RESET PROCEDURE:

Turn the key to the OFF position, then disconnect all connectors from the module.

Press and hold the module's programming button and connect all the connectors back to the module. Wait, the module's LED will flash RED rapidly (this may take up to 10 seconds).

Release the programming button. Wait, the LED will turn solid GREEN for 2 seconds to show the reset was successful.

TECHNICAL ASSISTANCE

Phone: 1-866-427-2999

Email: maestro.support@idatalink.com

Web: maestro.idatalink.com/support add www.12voltdata.com/forum/

IMPORTANT: To ensure proper operation, the aftermarket radio needs to have the latest firmware from the manufacturer. Please visit the radio manufacturer's website and look for any updates pertaining to your radio.

RETAINS STEERING WHEEL CONTROLS, VEHICLE SETTINGS, AND MORE!



PRODUCTS REQUIRED

iDataLink Maestro RR Radio Replacement Interface
iDataLink Maestro CHK1 Dash Kit

PROGRAMMED FIRMWARE

ADS-RR(SR)-CHR03M-DS

ADDITIONAL RESOURCES

[Maestro RR2 Programmable Outputs Guide](#)

OPTIONAL ACCESSORIES

K40[™]
ELECTRONICS
ESCORT

ACC-SP1

Click here for:
[Radar Installation Guides](#)


WELCOME

Congratulations on the purchase of your iDatalink Maestro RR Radio replacement solution. You are now a few simple steps away from enjoying your new car radio with enhanced features.

Before starting your installation, please ensure that your iDatalink Maestro module is programmed with the correct firmware for your vehicle and that you carefully review the install guide.

Please note that Maestro RR will only retain functionalities that were originally available in the vehicle.

NEED HELP?

 1 866 427-2999

 maestro.support@idatalink.com

 maestro.idatalink.com/support
www.12voltdata.com/forum

TABLE OF CONTENTS

Installation Instructions	3
Wiring Diagram	5
Radio Wire Reference Chart	6
Troubleshooting Table	7

INSTALLATION INSTRUCTIONS

FACTORY RADIO DISASSEMBLY / DASH KIT ASSEMBLY

STEP 1

- Pry out the climate panel to expose the two (2) screws that hold in the radio bezel. Disconnect the climate panel harness and put to the side. (Fig. 1.1, 1.2)

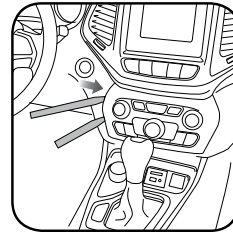


Fig. 1.1

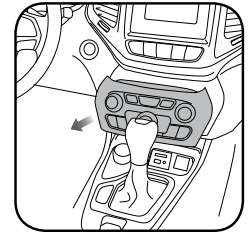


Fig. 1.2

STEP 2

- Remove the two (2) screws and remove the radio bezel. (Fig. 1.3)

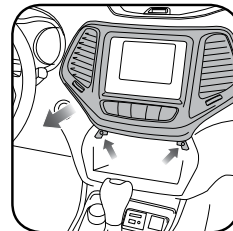


Fig. 1.3

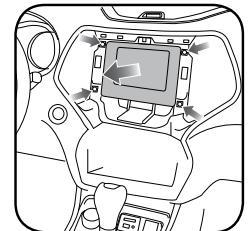


Fig. 1.4

STEP 3

- Remove the four (4) 7mm bolts securing the radio, then remove and disconnect the factory radio. (Fig. 1.4)

STEP 4

Remove the two (2) 7mm bolts visible from the front. Then, using a short screwdriver, remove the 2 screws located behind the metal bracket. (Fig. 1.5)

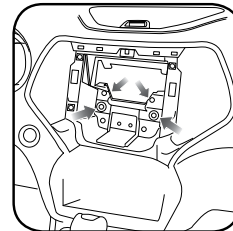


Fig. 1.5

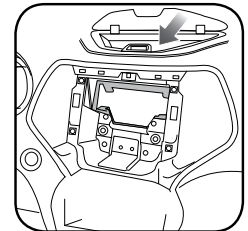


Fig. 1.6

STEP 5

Open the storage compartment located in the top center of the dash. Remove the rubber mat, then remove the screw. Now, remove the metal bracket from the radio cavity. (Fig. 1.6)

STEP 6

- Using a utility knife, remove the plastic in the shaded areas. (Fig. 1.7)

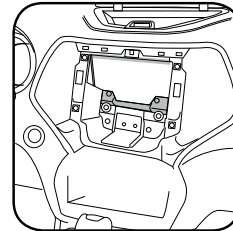


Fig. 1.7

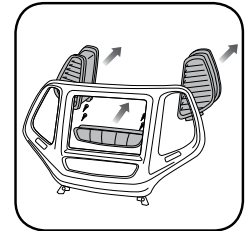


Fig. 1.8

STEP 7

- Transfer the air vents and the hazard button from the factory radio bezel to the aftermarket. If the vehicle is a model that does not have the hazard button bar on the radio bezel, use the blank provided with the kit to fill the space. (Fig. 1.8)

STEP 8

- Attach the provided metal brackets to the new radio. (Fig. 1.9)

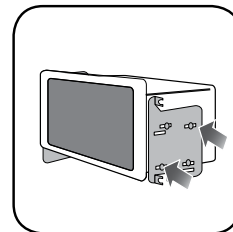


Fig. 1.9

INSTALLATION INSTRUCTIONS

MAKE CONNECTIONS

STEP 9

- Unbox the aftermarket radio and locate its main harness.
- Connect the wires shown on the next page from aftermarket radio main harness to the CHK1 T-harness and match the wire functions.

STEP 10

- Determine if the vehicle has a factory amplifier. Look for badges on the radio, door panels and dash that indicate the presence of an amplifier (ex: Alpine).

If the vehicle DOES NOT have a factory amplifier:

- Plug the female GREEN connector to the male GREEN connector of your CHK1 T-harness.
- Plug the female WHITE connector to the male WHITE connector of your CHK1 T-harness.

If the vehicle DOES have a factory amplifier:

- Plug the female GREEN connector to the male WHITE connector of your CHK1 T-harness.
- Plug the female WHITE connector to the male GREEN connector of your CHK1 T-harness.

STEP 11

- Connect the factory harness to the CHK1 T-harness.

STEP 12

- If using a T-harness **VER_1.6 or earlier**, cut and remove the OBDII connector from the cable. Connect Red/Brown wire to vehicle CANH and Yellow/Brown to vehicle CANL, located at CAN junction connector.
- If using a T-harness **VER_1.7 and up**, plug the white connectors into the vehicle's can junction, located behind glove box.

STEP 13

- Plug the aftermarket radio harnesses into the aftermarket radio.
- Plug the Data cable to the data port of the aftermarket radio.

- Insert the Audio cable into the iDatalink 3.5 mm audio jack of the aftermarket radio (If there is no iDatalink audio input, connect to AUX).

Note 1: On Pioneer radio, ensure that there is nothing plugged into the W/R port.

Note 2: If the vehicle is equipped with parking sensors AND using an Alpine radio: plug Audio cable in auxiliary input of the radio.

STEP 14

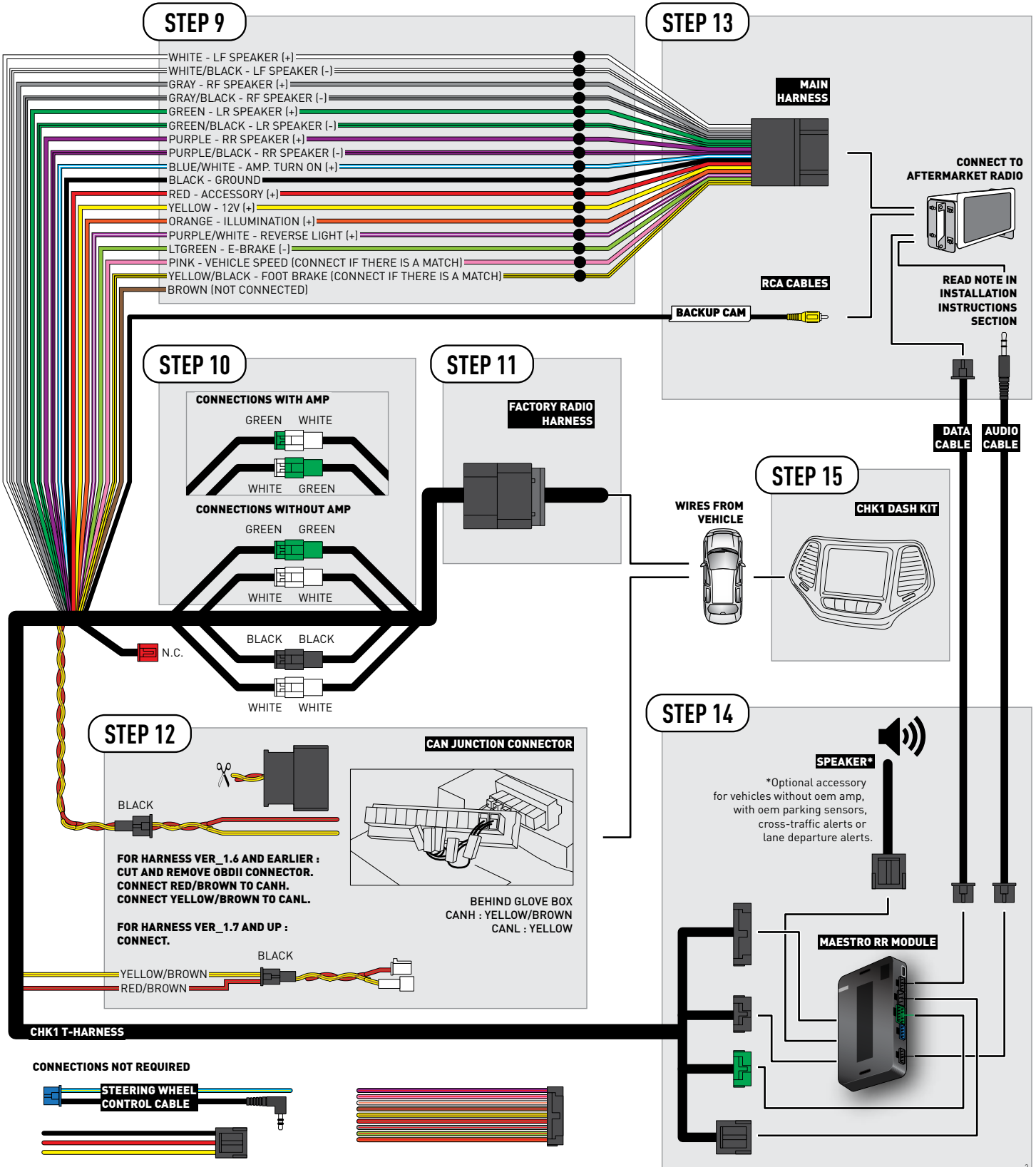
- Connect all the harnesses to the Maestro RR module.
- **If the vehicle is equipped with OEM parking assist, lane departure, or other safety systems, the ACC-SP1 is required: Plug the ACC-SP1 the Maestro RR.**

If you are not using this speaker, the radio will mute when the parking assist is active. If you are using this speaker, the parking assist chimes will play through the external speaker and the radio will not mute unless the settings are changed in the radio.

STEP 15

- Install the CHK1 dash kit and test your installation.

WIRING DIAGRAM



RADIO WIRE REFERENCE CHART

Wire Description	Polarity	Wire Color on Maestro T-Harness	Wire Color on Alpine cable	Wire Color on Kenwood cable	Wire Color on Pioneer cable	Wire Color on Sony cable
Illumination	(+)	Orange	N/A	Orange/White	Orange/White	Orange
Reverse Light	(+)	Purple/White	Orange/White	Purple/White	Purple/White	Purple/White
E-Brake	(-)	Lt Green	Yellow/Blue	Lt Green	Lt Green	Lt Green
Foot Brake	(+)	Yellow/Black	Yellow/Black	N/A	N/A	N/A
VSS (vehicle speed sensor)	(DATA)	Pink	Green/White	Pink	Pink	N/A

TROUBLESHOOTING TABLE

PROBLEM	SOLUTION
Gauges do not work / show up.	Make sure that you selected Gauges during the flash. Reset the RR.
When making a phone call you cannot hear the callers but they can hear you.	If your vehicle has a factory amplifier, make sure that the 4-pin green and white connectors in the harness are plugged in correctly, as stated in step 15.
The radio stays ON or the radio doesn't come ON at all.	Make sure the 2-pin colored connectors in the harness are connected correctly as stated in step 15.
The light on the Maestro is blinking RED TWICE .	Ensure the 4-pin data cable is connected between the radio and the RR, and that it is plugged into the black port on the Maestro RR. The red and blue ports on the RR should be empty. Make sure the correct radio model and serial number were entered during the flash. Verify the radio's serial number entered during the flash matches what is listed on the radio screen. This can be found in the settings of the radio, listed as Device Id, Device Number, or Serial Number.
The light on the Maestro is flashing RED ONCE .	There is no firmware on the module; flash the RR module.

MAESTRO RR RESET PROCEDURE:

Turn the key to the OFF position, then disconnect all connectors from the module.

Press and hold the module's programming button and connect all the connectors back to the module. Wait, the module's LED will flash RED rapidly (this may take up to 10 seconds).

Release the programming button. Wait, the LED will turn solid GREEN for 2 seconds to show the reset was successful.

TECHNICAL ASSISTANCE

Phone: 1-866-427-2999

Email: maestro.support@idatalink.com

Web: maestro.idatalink.com/support add www.12voltdata.com/forum/

IMPORTANT: To ensure proper operation, the aftermarket radio needs to have the latest firmware from the manufacturer. Please visit the radio manufacturer's website and look for any updates pertaining to your radio.