



Stealthbox®

INSTALLATION GUIDE
for the

SB-CAN-G2MVX3D/10TW3

SB-CAN-G2MVX3P/10TW3

SKU# 94672 & 94673

2019 & Up Can-Am Maverick X3

Enclosure Type: Sealed

Driver Type: 10TW3-D4

Nominal Impedance: 2 ohms

Continuous Power Handling: 400 watts (RMS method)

! IMPORTANT

If you choose to perform the installation yourself, it is absolutely vital that the Stealthbox® be properly mounted to the vehicle according to these instructions. Failure to mount the enclosure properly presents two problems:

- 1) The sub-bass performance will suffer due to the movement of the enclosure caused by the force exerted by the woofer(s).
- 2) A loose enclosure presents a serious safety hazard in the event of a collision or sudden deceleration.

INSTALLATION
DIFFICULTY:

2 ^{OUT} OF 5

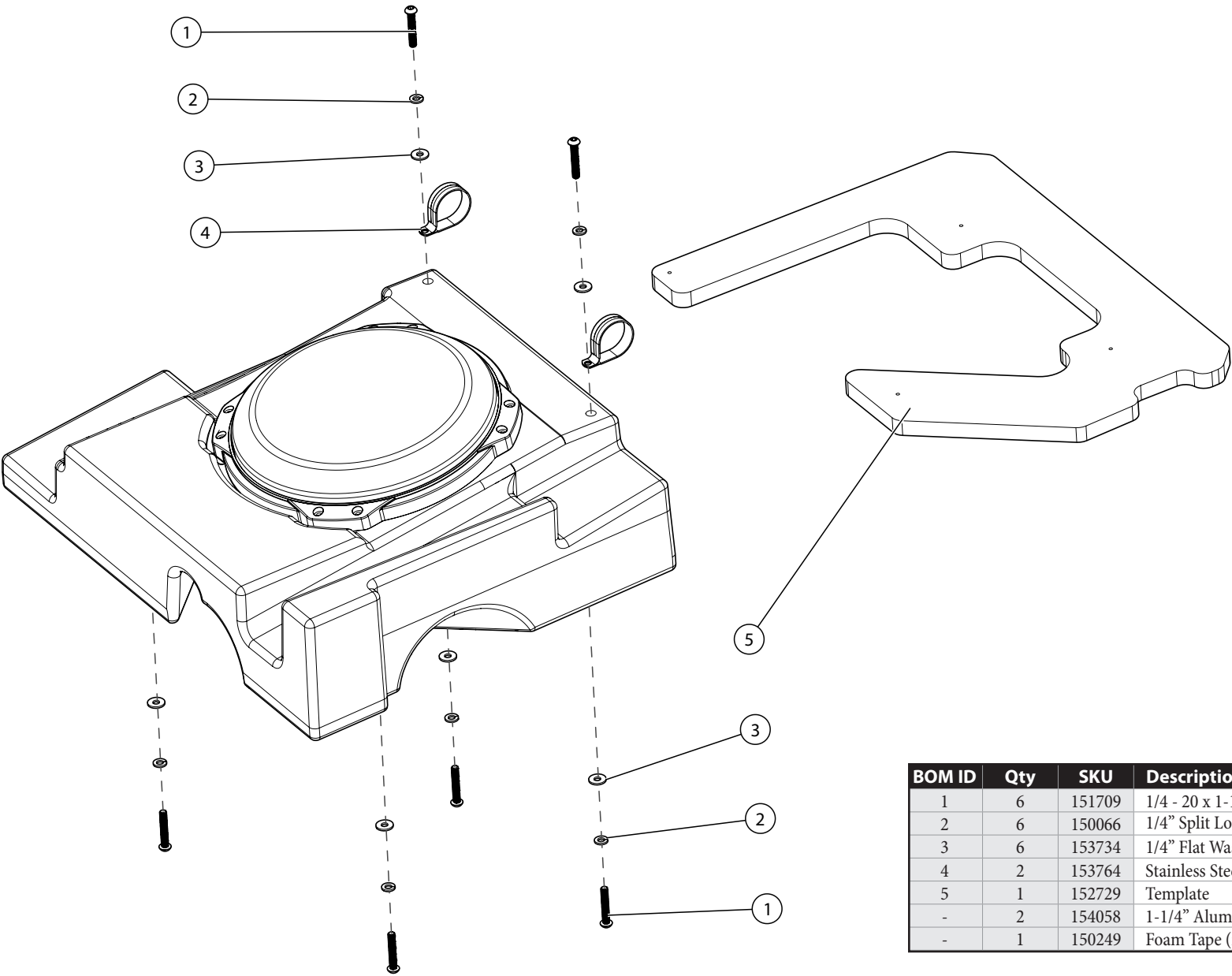
ESTIMATED TIME:
2 HOURS



Thank you for choosing a JL Audio Stealthbox® for your automotive sound system. With proper installation, your new vehicle-specific enclosed subwoofer system will deliver years of listening pleasure.

We strongly recommend that you have your new Stealthbox® installed by your authorized JL Audio dealer. The installation professionals employed by your dealer have the necessary tools and experience to disassemble and reassemble your vehicle properly. If you prefer to perform your own installation, please read this installation guide completely before beginning the process.

INCLUDED HARDWARE

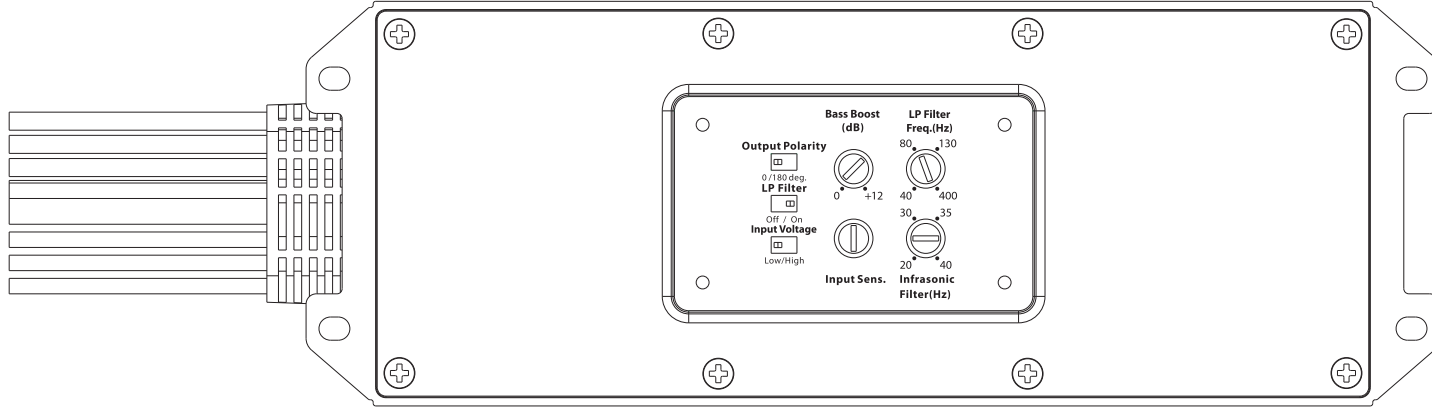


BOM ID	Qty	SKU	Description
1	6	151709	1/4 - 20 x 1-1/2" Socket Cap Screw
2	6	150066	1/4" Split Lock Washer
3	6	153734	1/4" Flat Washer
4	2	153764	Stainless Steel Cushion Clamp
5	1	152729	Template
-	2	154058	1-1/4" Aluminum Spacer (not shown)
-	1	150249	Foam Tape (not shown)

Note: For optimum performance, JL Audio recommends applying the included Foam Strips (or sound damping material) to surrounding plastic panels to reduce unwanted vibrations.

POWER RECOMMENDATION

JL Audio recommends high quality amplifiers such as the JL Audio MX300/1. The diagram below shows the recommended crossover settings for the MX300/1. For a detailed description of the amplifier settings, consult the owner's manual for the amplifier. If another amplifier is being used, please reference this illustration and use similar settings on that amplifier.



CONNECTIONS

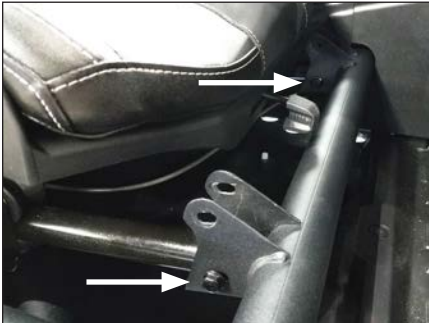
Using quality power, signal, and speaker wire is essential in ensuring the performance of your Stealthbox®. JL Audio recommends using a 4 AWG power kit such as the XD-PCS4-1B for your Stealthbox® amplifier. Other kits are available should you be using more than one amplifier. Signal wire such as the JL Audio Premium Audio Interconnect Cables should be used to provide signal for both channels of the amplifier. JL Audio recommends using 12AWG speaker wire for subwoofers such as our XC-BCS12-25.



STEP 1

NOTE: This manual illustrates the installation of the passenger side Stealthbox®. The installation procedure for the driver side Stealthbox® will be the same.

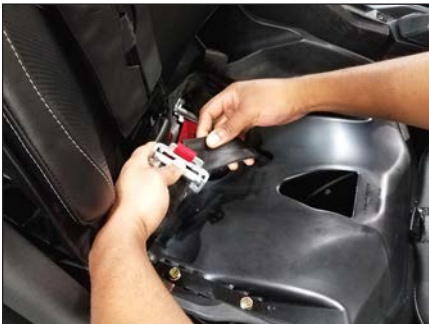
Empty the front of the vehicle.



STEP 2

Remove the two front 1/2" seat bolts from the seat bracket.

NOTE: The indicated lower seat bolt locations should not be used after the Stealthbox® installation. Be sure to use the upper seat bolt locations during reassembly.



STEP 3

Flip the seat cushion forward and separate the seat belt.



STEP 4

Pass the seat belt through the openings in the seat back.



STEP 5

Slide the seat forward. Remove the two 18mm rear seat nuts and the two 16mm seat belt bolts.



STEP 6

NOTE: This step is required for the driver's side Stealthbox® only.

Disconnect the seat belt harness at the inner seat belt bolt.



STEP 7

Cover the cage and frame rails to prevent scratching prior to removing the seat.



STEP 8

Carefully remove the seat from the vehicle.



STEP 9

Place a 1-1/4" Aluminum Spacer over each of the rear seat studs, as shown.



STEP 10

Position the Template on the vehicle floor, as shown. Push the Template forward and to the outside, as shown, until flush with the frame rails.



STEP 11

Using a small pick tool, mark each of the four hole locations through the Template onto the plastic floor panel.



STEP 12

Remove the Template from the vehicle.

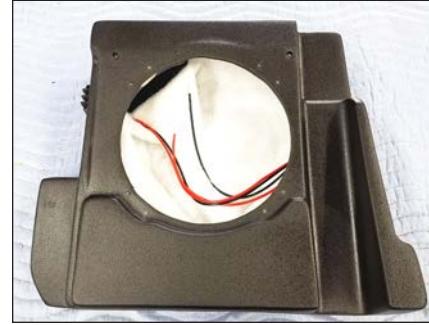
Using a 1/8" drill bit, drill a pilot hole through each of the marks made in the previous step.

Using a 5/16" drill bit, enlarge each of the pilot holes.



STEP 13

Place the Stealthbox® on a flat surface with the subwoofer facing up.



STEP 14

Remove the eight subwoofer mounting screws, then remove and disconnect the subwoofer.



STEP 15

Turn the enclosure over. Attach Foam Tape to the bottom of the enclosure, as shown.



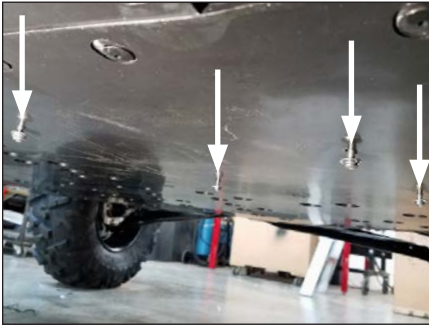
STEP 16

Carefully set the enclosure into the vehicle, and slide it forward and under the front seat bracket, as shown. Be sure the rear of the enclosure is flush with the plastic floor panel.



STEP 17

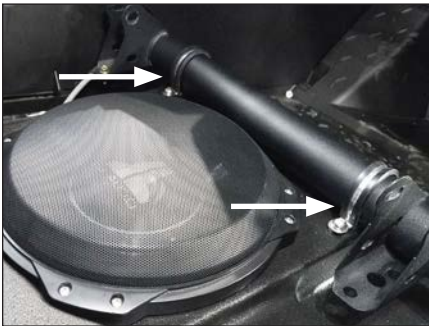
Connect and reinstall the subwoofer and eight subwoofer mounting screws.



STEP 18

Slide a 1/4" Split Lock Washer and a 1/4" Flat Washer over each of four 1/4 - 20 x 1-1/2" Socket Cap Screws.

From under the vehicle, pass each assembly through a drilled hole in the plastic floor panel, into a threaded insert in the bottom of the enclosure, and fully tighten.



STEP 19

Wrap a Stainless Steel Cushion Clamp over the outside front frame rail, aligning its holes with the threaded insert in the top of the enclosure.

Slide a 1/4" Split Lock Washer and a 1/4" Flat Washer over a 1/4 - 20 x 1-1/2" Socket Cap Screw, pass the assembly through the holes in the Stainless Steel Cushion Clamp, and into the threaded insert. Repeat the process for the inside front frame rail, then fully tighten.



STEP 20

Carefully reinstall the seat, and pass the seat belt back through the openings in the seat back. Connect the seat belt harness (driver's side only). Reinstall the rear seat nuts, seat belt bolts, and front seat bolts.

Note: For optimum performance, we recommend applying the included Foam Strips (or sound damping material) to surrounding plastic panels to reduce unwanted vibrations.

CONGRATULATIONS!

You have completed the installation for this model! Enjoy your new Stealthbox®!



MID/HIGH FREQUENCY DRIVER FITMENT

VeX™ Enclosed Speaker Systems are ideal for powersports and off-road vehicle applications. Each weatherproof pod can be mounted to a roll cage precisely aimed for optimum sound. Mounting fixtures are available to fit a variety of roll cage diameters.



JL AUDIO | How we play.®    

(954) 443-1100

www.jlaudio.com

All specifications are subject to change without notice. "JL Audio" and "How we play" are registered trademarks of JL Audio, Inc. "Ahead of the Curve" and its respective logo are trademarks of JL Audio, Inc. Printed in USA • ©2019 JL Audio, Inc. • For more detailed information please visit us online at www.jlaudio.com.

JLA-SKU# 011529 • ver. 09.05.2019 • 10369 NORTH COMMERCE PARKWAY • MIRAMAR, FLORIDA • 33025 • USA



011529