

**! IMPORTANT**

If you choose to perform the installation yourself, it is absolutely vital that the Stealthbox® be properly mounted to the vehicle according to these instructions. Failure to mount the enclosure properly presents two problems:

- 1) The sub-bass performance will suffer due to the movement of the enclosure caused by the force exerted by the woofer(s).
- 2) A loose enclosure presents a serious safety hazard in the event of a collision or sudden deceleration.

**INSTALLATION
DIFFICULTY:****2** **OUT**
OF **5****ESTIMATED TIME:
1 HOUR**

Stealthbox®

INSTALLATION GUIDE
for the

SB-F-150-SCDBL/12TW3

SKU# 94661

2009-Up Ford F-150 SuperCrew & 2017-Up SuperDuty Crew Cab

Enclosure Type: Sealed

Driver Type: 12TW3-D8

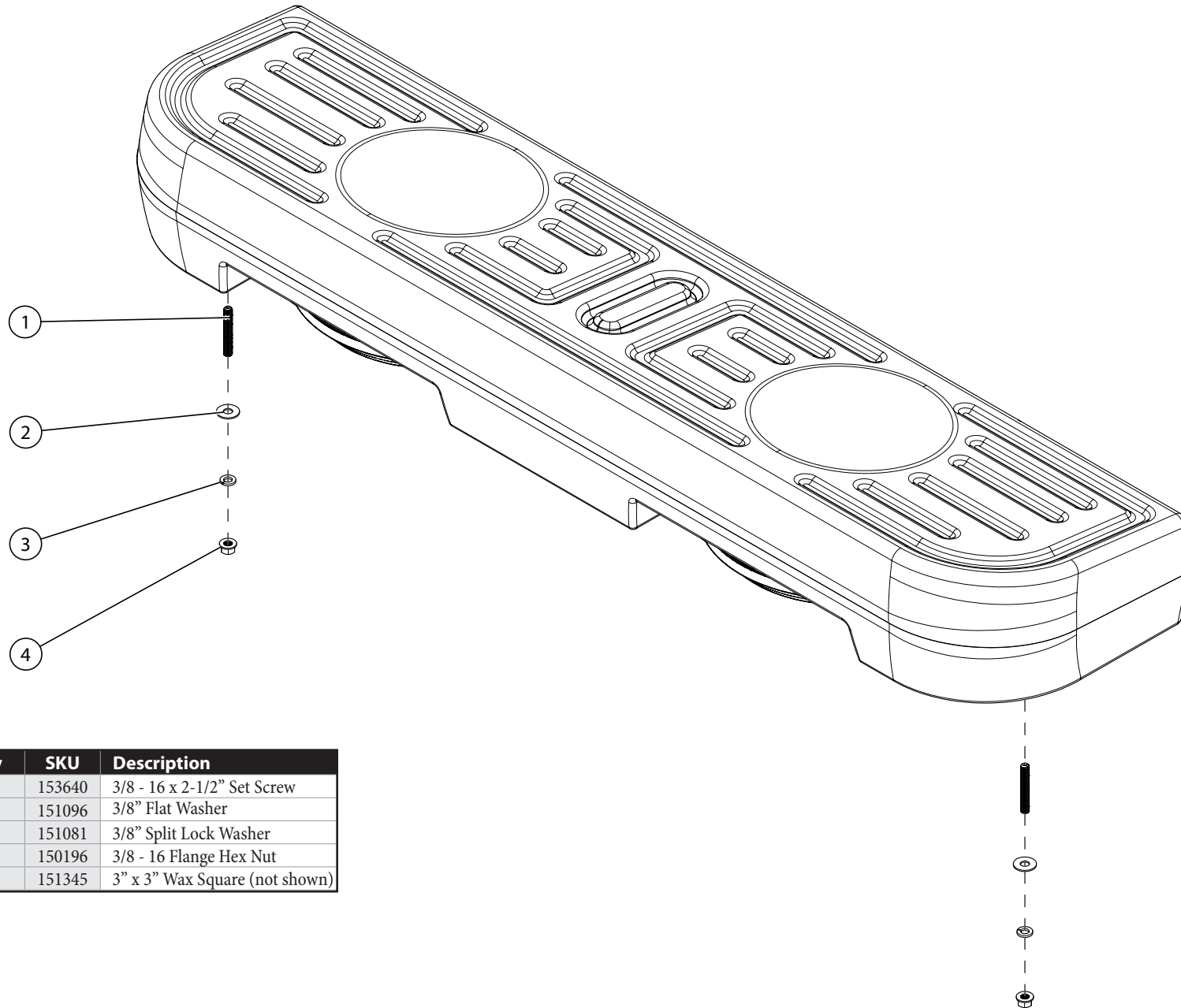
Nominal Impedance: 2 ohms

Continuous Power Handling: 800 watts (RMS method)

Thank you for choosing a JL Audio Stealthbox® for your automotive sound system. With proper installation, your new vehicle-specific enclosed subwoofer system will deliver years of listening pleasure.

We strongly recommend that you have your new Stealthbox® installed by your authorized JL Audio dealer. The installation professionals employed by your dealer have the necessary tools and experience to disassemble and reassemble your vehicle properly. If you prefer to perform your own installation, please read this installation guide completely before beginning the process.

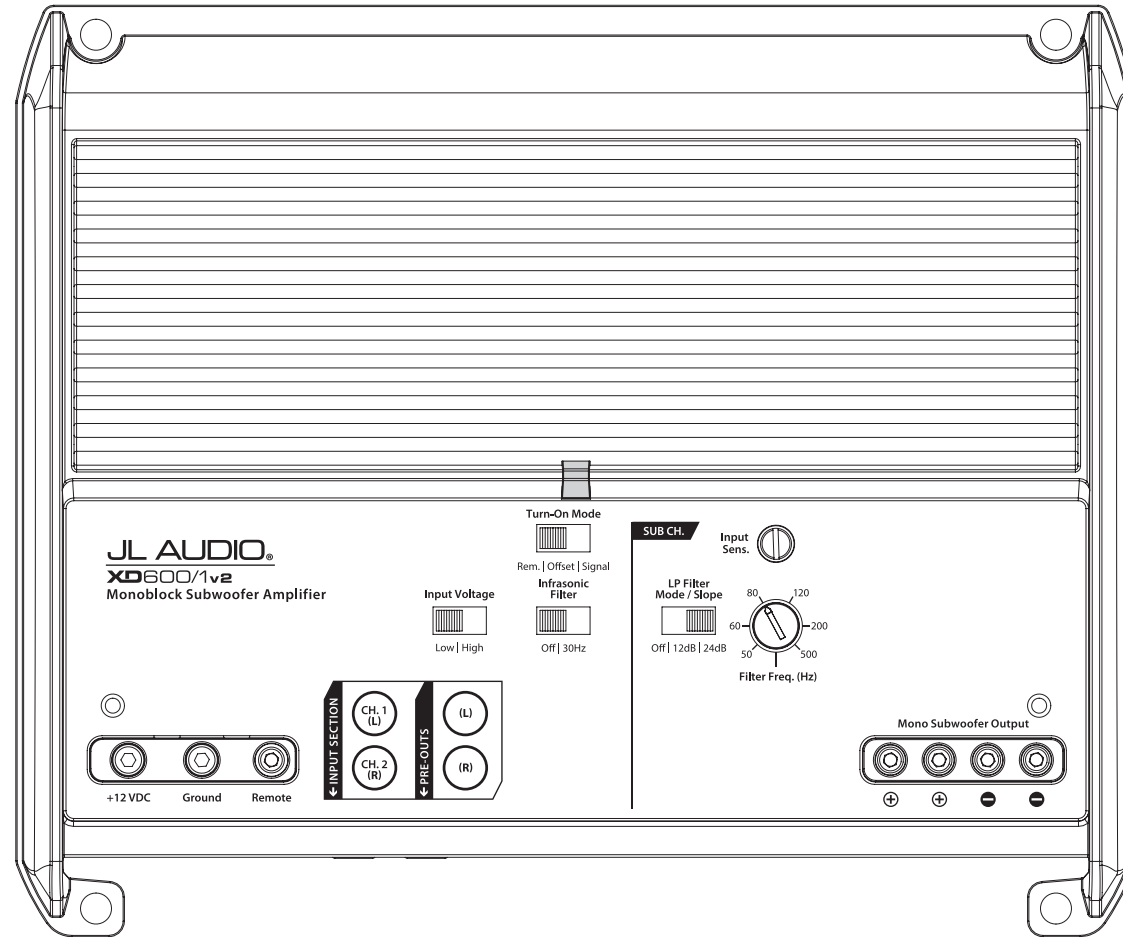
INCLUDED HARDWARE



BOM ID	Qty	SKU	Description
1	2	153640	3/8 - 16 x 2-1/2" Set Screw
2	2	151096	3/8" Flat Washer
3	2	151081	3/8" Split Lock Washer
4	2	150196	3/8 - 16 Flange Hex Nut
-	2	151345	3" x 3" Wax Square (not shown)

POWER RECOMMENDATION

JL Audio recommends high quality amplifiers such as the JL Audio XD600/1v2. The diagram below shows the recommended crossover settings for the XD600/1v2. For a detailed description of the amplifier settings, consult the owner's manual for the amplifier. If another amplifier is being used, please reference this illustration and use similar settings on that amplifier.



CONNECTIONS

Using quality power, signal, and speaker wire is essential in ensuring the performance of your Stealthbox®. JL Audio recommends using a 4 AWG power kit such as the XD-PCS4-1B for your Stealthbox® amplifier. Other kits are available should you be using more than one amplifier. Signal wire such as the JL Audio Premium Audio Interconnect Cables should be used to provide signal for both channels of the amplifier. JL Audio recommends using 12 AWG speaker wire for subwoofers such as our XC-BCS12-25.



STEP 1
Empty the rear seat area.



STEP 2
Fold the seat bottoms up.



STEP 3
Place the Stealthbox into the vehicle, as shown.



STEP 4
Thread a 3/8 - 16 x 2-1/2" Set Screw into the threaded insert on the bottom of the enclosure, leaving approximately 1/2" exposed.
Repeat for the opposite side.



STEP 5
Place the Stealthbox into position, as shown. The enclosure should be centered in the vehicle and pushed rearward until flush against the rear seat bracket bolts.



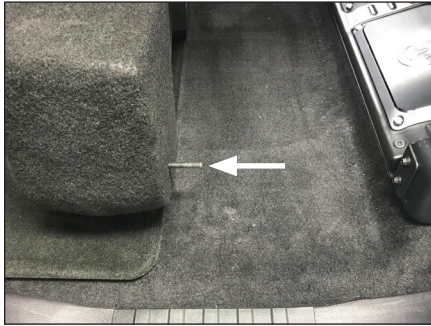
STEP 6
Remove the adhesive from a Wax Square. Lift up on the side of the enclosure, and affix the Wax Square to the floor directly under the 3/8 - 16 x 2-1/2" Set Screw installed in **Step 4**.
Repeat for the opposite side.
Firmly press down on the enclosure so that the 3/8 - 16 x 2-1/2" Set Screws leave an impression in the Wax Squares.



STEP 7
Carefully tilt the enclosure forward, as shown, ensuring the Wax Squares remain affixed to the floor.



STEP 8
Using a 1/2" drill bit, carefully drill through the impression in the Wax Square.
Repeat for the opposite side.
Remove the Wax Squares from the vehicle.



STEP 9

Loosen the 3/8 - 16 x 2-1/2" Set Screw so that approximately 1-1/2" is exposed.

Repeat for the opposite side.



STEP 10

Connect speaker cable to the terminal cup on the back of the enclosure, and place the Stealthbox back into position, allowing each of the 3/8 - 16 x 2-1/2" Set Screws to drop through the holes drilled in **Step 8**.

Route the speaker cable as necessary.



STEP 11

From under the vehicle, slide a 3/8" Flat Washer, 3/8" Split Lock Washer, and 3/8 - 16 Flange Hex Nut over the 3/8 - 16 x 2-1/2" Set Screw, and fully tighten.

Repeat for the opposite side.



STEP 12

Fold the seat bottoms back down.

CONGRATULATIONS!

You have completed the installation for this model! Enjoy your new Stealthbox®!



MID/HIGH FREQUENCY DRIVER FITMENT

A variety of JL Audio coaxial and component systems will fit in the factory speaker locations of your vehicle.

Location / OEM Speaker Size	Suggested JL Audio Speaker Models	
	Coaxial Models	Component Models
Front Doors / 6 x 9-inch	C1-690x ⁽¹⁾ , C1-690tx ⁽¹⁾ , C2-690tx ⁽¹⁾ , C2-650x ⁽¹⁾ , C5-650x ⁽¹⁾	C1-690 ⁽¹⁾ , C1-650 ⁽¹⁾ , C2-650 ⁽¹⁾ , C3-650 ⁽¹⁾ , C5-650 ⁽¹⁾ , C7-650cw ^(1,2)
Rear Doors / 6.5-inch	C1-650x, C2-650x, C5-650x	C1-650, C2-650, C3-650, C5-650, C7-650cw ⁽²⁾

1 - Installation may require adaptor, 2 - Component woofer only

JL AUDIO | How we play.®    

(954) 443-1100

www.jlaudio.com

All specifications are subject to change without notice. "JL Audio" and "How we play" are registered trademarks of JL Audio, Inc. "Ahead of the Curve" and its respective logo are trademarks of JL Audio, Inc.

Printed in USA • ©2018 JL Audio, Inc. • For more detailed information please visit us online at www.jlaudio.com.

JLA-SKU# 011506 • ver. 05.07.2018 • 10369 NORTH COMMERCE PARKWAY • MIRAMAR, FLORIDA • 33025 • USA



011506