

Stealthbox®

INSTALLATION GUIDE
for the
SB-FIAT-500/10TW3
SKU# 94578
2007 & Up Fiat 500



Thank you for choosing a JL Audio Stealthbox® for your automotive sound system.

With proper installation, your new vehicle-specific enclosed subwoofer system will deliver years of listening pleasure.

We strongly recommend that you have your new Stealthbox® installed by your authorized JL Audio dealer. The installation professionals employed by your dealer have the necessary tools and experience to disassemble and reassemble your vehicle properly. If you prefer to perform your own installation, please read this installation guide completely before beginning the process.

JL AUDIO®
Ahead of the Curve™

! IMPORTANT

If you choose to perform the installation yourself, it is absolutely vital that the Stealthbox® be properly mounted to the vehicle according to these instructions. Failure to mount the enclosure properly presents two problems:

- 1) The sub-bass performance will suffer due to the movement of the enclosure caused by the force exerted by the woofer(s).
- 2) A loose enclosure presents a serious safety hazard in the event of a collision or sudden deceleration.

INSTALLATION DIFFICULTY:

2 OUT OF 5

ESTIMATED TIME:
1 HOUR

SPECIFICATIONS

Enclosure Type: Sealed
Driver Type: 10TW3-D4
Nominal Impedance: 2 ohms
Continuous Power Handling: 400 watts (RMS method)

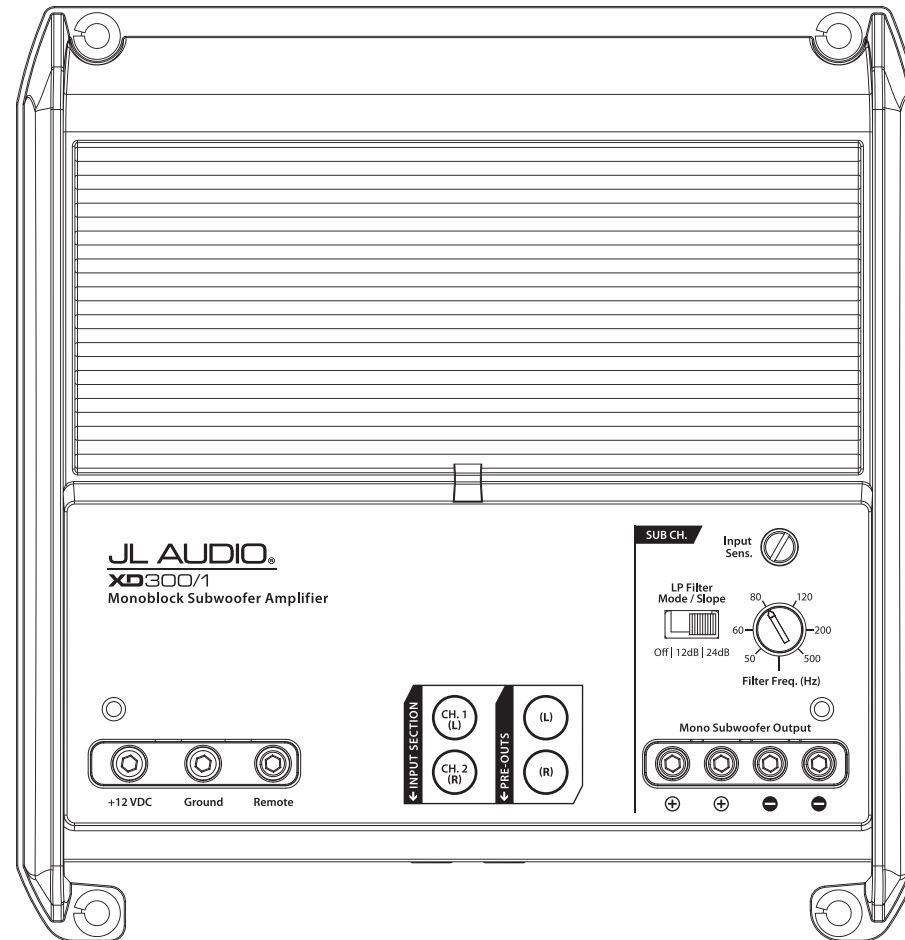
INCLUDED HARDWARE

- (1) U-Nut
- (1) 3/8 - 16 x 2-1/4" Set Screw
- (1) 3/8" Fender Washer
- (1) 3/8" Lock Washer
- (1) 3/8 - 16 Hex Nut



POWER RECOMMENDATION

JL Audio recommends high quality amplifiers such as the JL Audio XD300/1v2. The diagram below shows the recommended crossover settings for the XD300/1v2. For a detailed description of the amplifier settings, consult the owner's manual for the amplifier. If another amplifier is being used, please reference this illustration and use similar settings on that amplifier.



CONNECTIONS

Using quality power, signal, and speaker wire is essential in ensuring the performance of your Stealthbox®. JL Audio recommends using a 4 AWG power kit such as the XD-PCS4-1B for your Stealthbox® amplifier. Other kits are available should you be using more than one amplifier. Signal wire such as the JL Audio Premium Audio Interconnect Cables should be used to provide signal for both channels of the amplifier. JL Audio recommends using 12AWG speaker wire for subwoofers such as our XC-BCS12-25.

**STEP 1**

Empty out the trunk of the vehicle. Remove the woofer from the Stealthbox® and place the enclosure into position in the trunk. Mark the trunk liner through the hole in the back of the enclosure. Remove the enclosure, and cut an "X" on the mark.

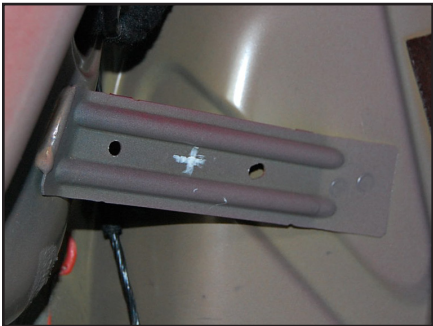
**STEP 2**

Carefully unclip the rear sill panel, and remove the panel.

For Hatchback Models: Remove shelf and Phillips head screw below the shelf.

For Convertible Models: Unclip the carpet from the under the rear deck.

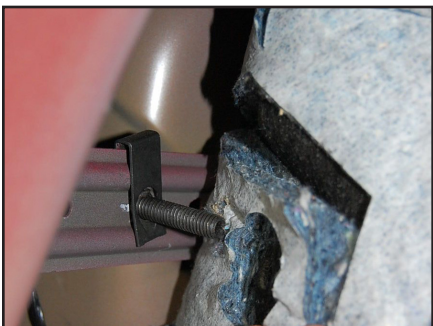
Pull back the trunk liner and locate the brace.

**STEP 3**

Measure and mark the center of the brace between the two factory holes. Drill a 9/16" hole on the mark.

Before drilling, always make sure that you are not going to be drilling into any gas lines, brake lines, tires, transmission lines, electrical wiring, exhaust systems or anything else that might cause a reduction in your weekly pay.

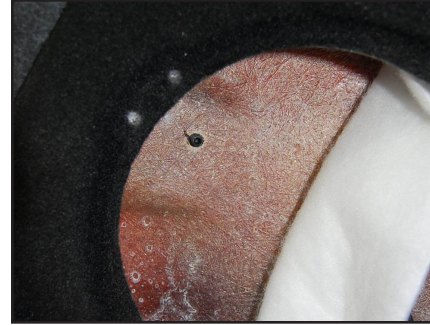
Always wear eye protection when drilling!

**STEP 4**

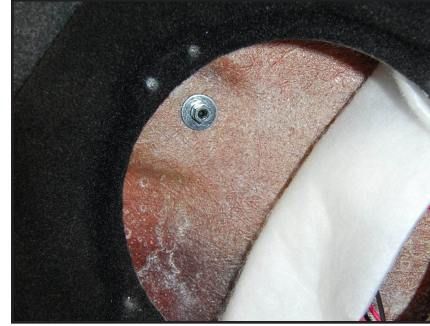
Slide a U-Nut over the brace and align it with the hole drilled in the previous step. Thread a 3/8 - 16 x 2-1/4" into the U-Nut, leaving about 1-1/4" exposed as shown.

**STEP 5**

Reinstall the trunk liner, allowing the 3/8 - 16 x 2-1/4" Set Screw to pass through the cut made in **Step 1**. Reinstall the other trunk parts.

**STEP 6**

Attach speaker cable to the terminal cup on the Stealthbox®, and place it back into position in the trunk, allowing the 3/8 - 16 x 2-1/4" Set Screw to pass through the hole in the back of the enclosure.

**STEP 7**

Slide a 3/8" Fender Washer, a 3/8" Lock Washer, and a 3/8 - 16 Hex Nut over the 3/8 - 16 x 2-1/4" Set Screw, and firmly tighten. Route the speaker cable as necessary.

**STEP 8**

Reinstall the subwoofer.

CONGRATULATIONS!

You have completed the installation for this model! Enjoy your new Stealthbox®!

**MID/HIGH FREQUENCY DRIVER FITMENT**

A variety of JL Audio coaxial and component systems will fit in the factory speaker locations of your vehicle.

Front Speaker Size / Location: 6-1/2" - Front Doors
Fits JL Audio Models: TR650-CXi, TR650-CSi, C2-650x, C2-650, C3-650,
C5-570, C5-650x, C5-650, & ZR570-CSi

Rear Speaker Size / Location: 3-1/2" - Rear Side Panel
Fits JL Audio Models: TR350-CXi, C2-350x



JL AUDIO®
Ahead of the Curve™

(954) 443-1100

www.jlaudio.com

All specifications are subject to change without notice. "JL Audio" and the JL Audio logo, "Stealthbox" and the Stealthbox logo are registered trademarks of JL Audio, Inc. "Ahead of the Curve" and its respective logo is a trademark of JL Audio, Inc.
JLA-SKU# 011366 09.20.2016 • Printed in USA • ©2016 JL Audio, Inc.
For more detailed information please visit us online at www.jlaudio.com.

