

Stealthbox®

INSTALLATION GUIDE
for the

SB-GM-ESCESV/10W1v3

SB-GM-ESC/10W1v3

SKU#94476-94479 & 94483-94486

2007-2013 Cadillac Escalade, Chevrolet Tahoe/Suburban, & GMC Yukon



Thank you for choosing a JL Audio Stealthbox® for your automotive sound system. With proper installation, your new vehicle-specific enclosed subwoofer system will deliver years of listening pleasure.

We strongly recommend that you have your new Stealthbox® installed by your authorized JL Audio dealer. The installation professionals employed by your dealer have the necessary tools and experience to disassemble and reassemble your vehicle properly. Also, keep in mind that your warranty coverage extends to 2 years if your system is installed or approved by your authorized JL Audio dealer. If you prefer to perform your own installation, please read this installation guide completely before beginning the process.

JL AUDIO®
Ahead of the Curve™

! IMPORTANT

If you choose to perform the installation yourself, it is absolutely vital that the Stealthbox® be properly mounted to the vehicle according to these instructions. Failure to mount the enclosure properly presents two problems:

- 1) The sub-bass performance will suffer due to the movement of the enclosure caused by the force exerted by the woofer(s).
- 2) A loose enclosure presents a serious safety hazard in the event of a collision or sudden deceleration.

INSTALLATION DIFFICULTY:

2 OUT OF 5

ESTIMATED TIME:
2 HOURS

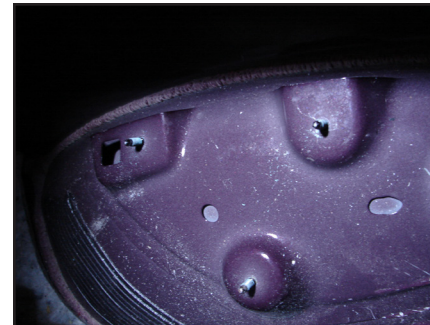


STEP 1

These instructions are for both the short and long wheelbase versions of this popular SUV.

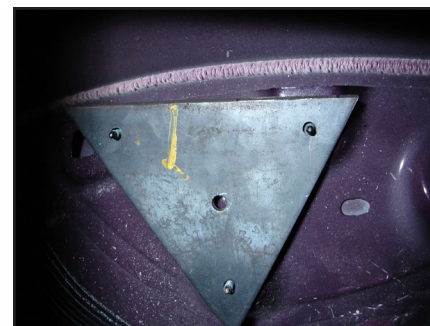
Empty out the back of the vehicle so that you have a clean area to work in.

Remove the pocket in the rear quarter interior trim panel on the drivers side of the vehicle by pulling it up and out. The wire to power the Stealthbox® needs to come from this open area, now would be a good time to run that wire. Leave enough extra to make it easy to make the connection to the Stealthbox® before it is permanently mounted.



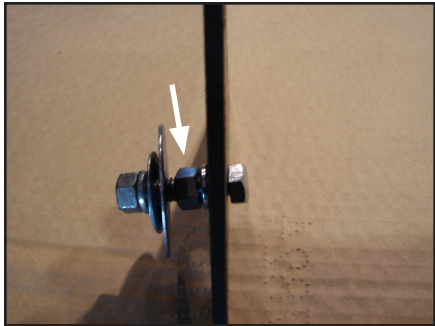
STEP 2

Looking down through the hole where the pocket had been, notice the three studs installed at the factory. These studs will be used to hold down the enclosure.



STEP 3

The Triangular Plate will be positioned as shown with center the hole closest to the stud pointing towards the center of the vehicle.



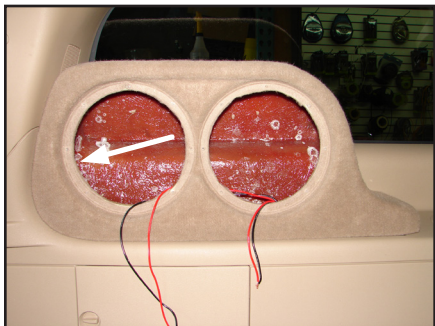
STEP 4

This is a side view of the Bracket shown in **STEP 3** with the included hardware shown for illustration purposes. Install the 3/8-16 x 1-3/4" Hex Head Bolt through the Triangular Plate as shown, tighten the Hex Nut that the arrow points towards. The hardware shown to the left of the 3/8 x 2" Fender Washer will be inside the Stealthbox® once the installation is complete.



STEP 5

Install the Triangular Plate as shown, tighten down the fasteners that secure the Triangular Plate, leave only the large Flat washer on top of the Hex nut, Split Lock Washer and 3/8-16 x 1-3/4" Hex Head Bolt. The remaining Flat Washer, Split Lock Washer and Hex Nut will be installed inside the enclosure.



STEP 6

Remove the two woofers from the Stealthbox® and, set it into place, with the extension going into the previous pocket location.

Inside the Stealthbox®, where the arrow points, use a small marker to mark the interior panel where the hole in the enclosure wall lies.

Remove the Stealthbox®



STEP 7

Remove the upper rear quarter window trim molding.



STEP 8

The upper mount for the lift arm for the tailgate must be disconnected as shown in order to remove the trim panel.

The wiring harness that runs along the rear pillar has a white plastic plug (see arrow) that pushes through a hole in the pillar to locate it. Pull the plug as this hole will be used to secure the lower end of the Custom Bracket shown in **STEP 10**.



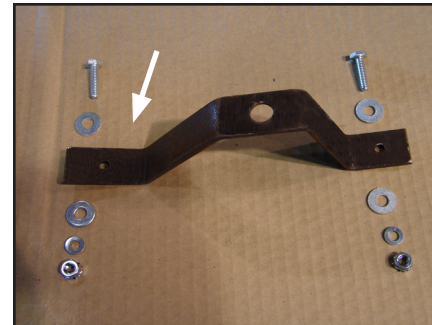
STEP 9

Drill the mark made in **STEP 6**, enlarge the hole to 1/2 inch.

*****CAUTION*****

Before drilling, always make sure that you are not going to be drilling into any gas lines, brake lines, tires, transmission lines, electrical wiring, exhaust systems or anything else that might cause a reduction in your weekly pay.

Always wear eye protection when drilling!



STEP 10

The 1/4" hardware will be installed in the order as shown as the custom bracket is installed in the vehicle.

NOTE: The arrow points to the upper end of the bracket.



STEP 11

Bolt the bottom hole of the Custom Bracket to the rear pillar through the hole where the wiring harness had been secured (see **STEP 8**). Slide the supplied 3/8-16 Speed Nut onto the Custom Bracket as shown, align the hole in the Custom Bracket with the hole in the rear quarter trim panel.



STEP 12

With the bottom of the Custom Bracket bolted in and aligned as described in **Step 11** drill a hole through the pillar corresponding with the upper hole in the Custom Bracket as shown.

******CAUTION******

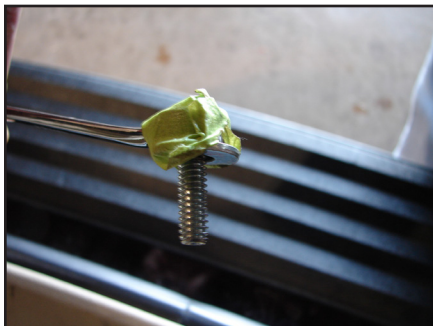
Before drilling, always make sure that you are not going to be drilling into any gas lines, brake lines, tires, transmission lines, electrical wiring, exhaust systems or anything else that might cause a reduction in your weekly pay. Always wear eye protection when drilling!



STEP 13

From inside the rear pillar, feed the 1/4-20 x 1" Hex Head Bolt and 1/4" Flat Washer through the hole drilled in **STEP 12** as shown.

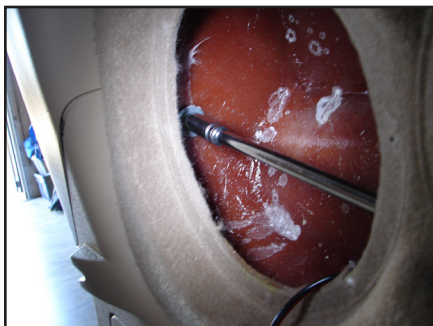
A suggestion on how to get the hardware through the hole and held in place is shown below.



DETAIL

One way to get the Hex Head Bolt and Flat Washer installed from the inside of the rear pillar out is to tape them to a wrench and then guide them through the recently drilled hole. Once this hardware is in place, tighten all of the hardware that secures the Custom Bracket in location. With the Custom Bracket securely installed, replace the upper rear quarter window trim molding that was removed in **STEP 7**.

Connect the speaker cables from the amplifier and set the Stealthbox® in place.



STEP 15

Install the mounting 3/8-16 x 1 3/4" Hex Head Bolt, Split Lock Washer and Flat Washer through the enclosure wall into the Speed Nut shown in **STEP 11**. Also install the Hex Nut, Split Lock Washer and, Flat Washer on the stud that protrudes into the bottom of the Stealthbox® from the Triangular Plate installed in **STEP 5**. Re-install the woofers into the Stealthbox®.

CONGRATULATIONS!

You have completed the installation for this model!
Enjoy your new Stealthbox®! Please refer to the Power Recommendation section for an amplifier recommendation and basic set-up help.

INCLUDED HARDWARE

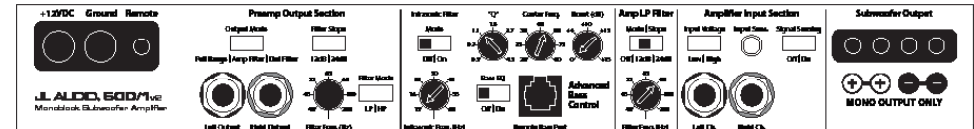
- | | |
|----------------------------------|------------------------------|
| 1) Triangular Plate | 1) Custom Bracket |
| 4) 1/4" Flat Washer | 3) 3/8" Split Lock Washer |
| 2) 1/4-20 x 1" Hex Head Bolt | 2) 1/4" Split Lock Washer |
| 2) 3/8-16 x 1 3/4" Hex Head Bolt | 2) 3/8-16 Hex Nut |
| 2) 1/4-20 Speed Nut | 2) 1/4-20 x 1" Hex Head Bolt |
| 2) 3/8 x 1-1/4" Fender Washer | 2) 3/8 x 2" Fender Washer |

SPECIFICATIONS

Enclosure Type: Acoustic Suspension (sealed)
Driver Type: (2) 10W1v3-4
Nominal Impedance: 40ohms per woofer, 20hm final load
Continuous Power Handling: 600 Watts

POWER RECOMMENDATION

JL Audio recommends high quality amplifiers such as the JL Audio HD900/5, 600/1v3, XD600/1 or JX 500/1. The diagram below shows the recommended crossover, infrasonic filter and equalizer settings for the 600/1v3. If another amplifier is being used, please reference this illustration and use similar settings on that amplifier.



All JL Audio amplifiers are very versatile audio components. Please consult the owner's manual for even more detailed information about installing and tuning your amplifier.

CONNECTIONS

Using quality power, signal and speaker wire is essential in ensuring the performance of your Stealthbox®. JL Audio recommends using a 4 AWG power kit such as the XC-PCS4-1B for your Stealthbox® amplifier, other kits are available should you be using more than one amplifier. Signal wire such as the JL Audio Premium Audio Interconnect Cables should be used that will provide signal for both channels of the amplifier. JL Audio recommends using 12AWG speaker wire for subwoofers such as our XC-BCS12-25.

MID/HIGH FREQUENCY DRIVER FITMENT

A variety of JL Audio coaxial and component systems will fit in the factory speaker locations of your vehicle.

Front Speaker Size / Location: 6-1/2" - Front Doors
Fits JL Audio Models: TR650-CXI, C2-650x, C3-650, C5-650, C5-650x & ZR650-CSi

Rear Speaker Size / Location: 6-1/2" - Rear Door
Fits JL Audio Models: TR650-CXI, C2-650x, C3-650, C5-650, C5-650x & ZR650-CSi



JL AUDIO®
Ahead of the Curve™

(954) 443-1100 www.jlaudio.com

All specifications are subject to change without notice. "JL Audio" and the JL Audio logo, "Stealthbox" and the Stealthbox logo are registered trademarks of JL Audio, Inc. "Ahead of the Curve" and its respective logo is a trademark of JL Audio, Inc.
JLA-SKU# 011303 08.10.2014 • Printed in USA • ©2010 JL Audio, Inc. - U.S. PATENTS: #5,734,734 #5,949,898 #6,118,884 #6,229,902 #6,243,479 #6,294,959 #6,501,844 #6,496,590 #6,441,685 #5,687,247 #6,219,431 #6,625,292 #D472,891 #D480,709 Other U.S. & Foreign patents pending.

