



Ahead of the Curve®



# Stealthbox®

INSTALLATION GUIDE  
for the

**SB-H-CRV2/10TW3**

SKU# 94584 - 94586

2012 & Up Honda CRV

**Enclosure Type:** Sealed

**Driver Type:** 10TW3-D4

**Nominal Impedance:** 2 ohms

**Continuous Power Handling:** 400 watts (RMS method)

## ! IMPORTANT

If you choose to perform the installation yourself, it is absolutely vital that the Stealthbox® be properly mounted to the vehicle according to these instructions. Failure to mount the enclosure properly presents two problems:

- 1) The sub-bass performance will suffer due to the movement of the enclosure caused by the force exerted by the woofer(s).
- 2) A loose enclosure presents a serious safety hazard in the event of a collision or sudden deceleration.

INSTALLATION  
DIFFICULTY:

2 OUT OF 5

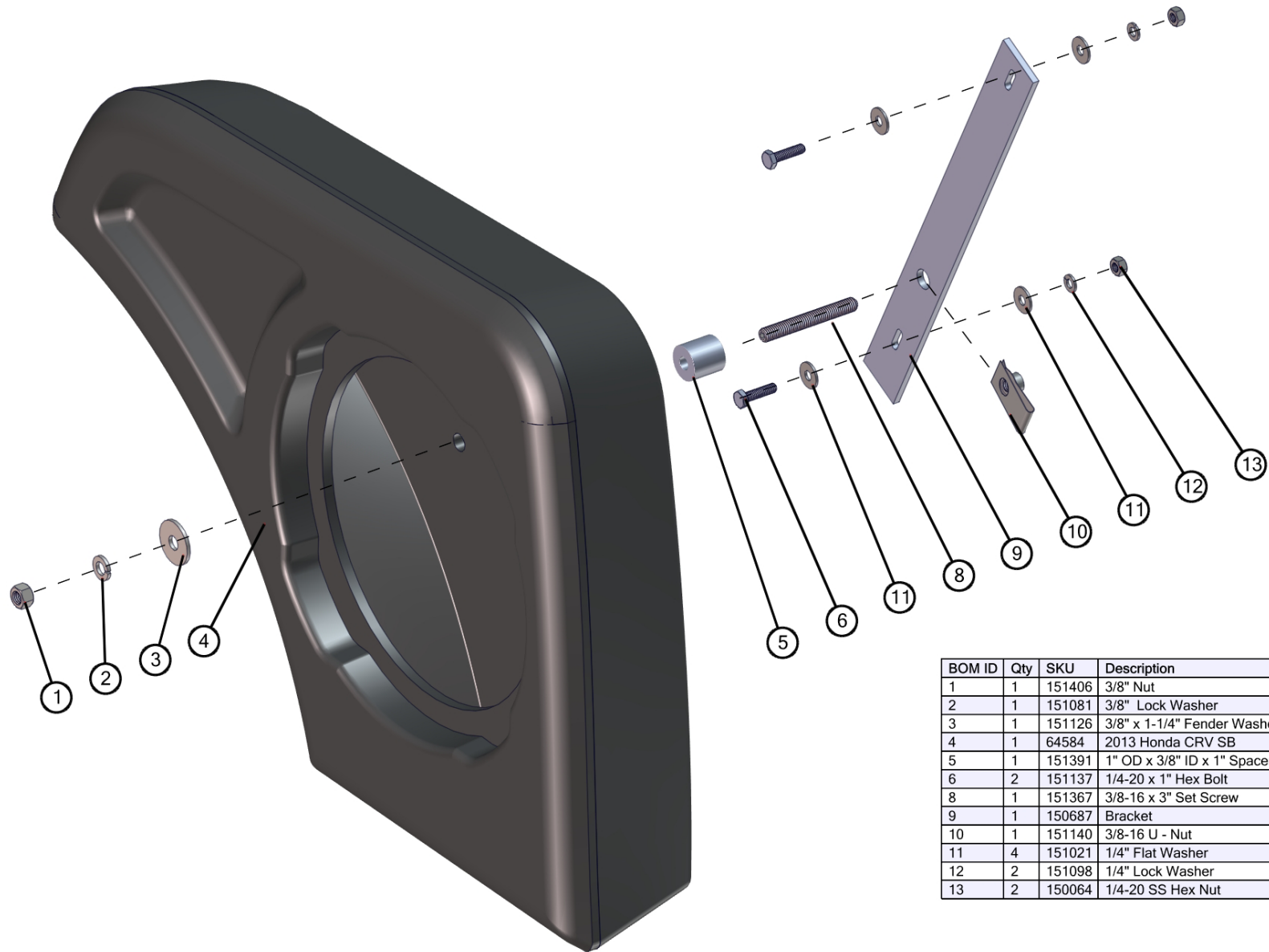
ESTIMATED TIME:  
2 HOURS



*Thank you for choosing a JL Audio Stealthbox® for your automotive sound system. With proper installation, your new vehicle-specific enclosed subwoofer system will deliver years of listening pleasure.*

*We strongly recommend that you have your new Stealthbox® installed by your authorized JL Audio dealer. The installation professionals employed by your dealer have the necessary tools and experience to disassemble and reassemble your vehicle properly. If you prefer to perform your own installation, please read this installation guide completely before beginning the process.*

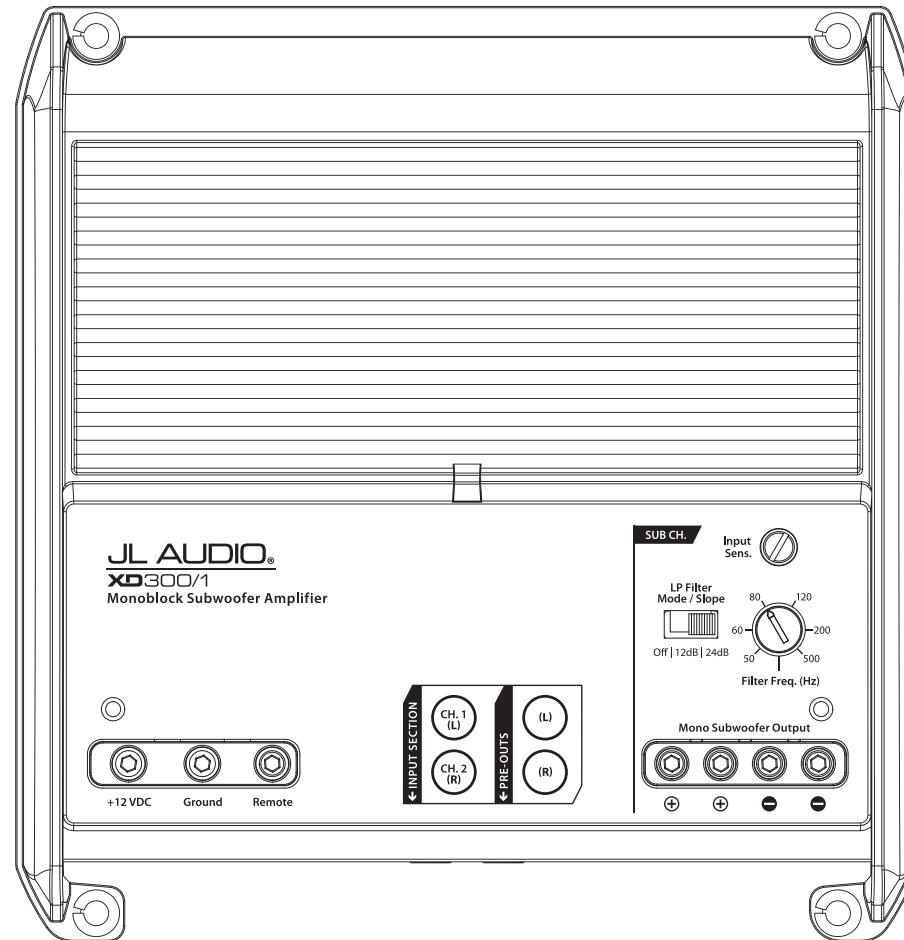
**INCLUDED HARDWARE**



BOM ID	Qty	SKU	Description
1	1	151406	3/8" Nut
2	1	151081	3/8" Lock Washer
3	1	151126	3/8" x 1-1/4" Fender Washer
4	1	64584	2013 Honda CRV SB
5	1	151391	1" OD x 3/8" ID x 1" Spacer
6	2	151137	1/4-20 x 1" Hex Bolt
8	1	151367	3/8-16 x 3" Set Screw
9	1	150687	Bracket
10	1	151140	3/8-16 U - Nut
11	4	151021	1/4" Flat Washer
12	2	151098	1/4" Lock Washer
13	2	150064	1/4-20 SS Hex Nut

## POWER RECOMMENDATION

JL Audio recommends high quality amplifiers such as the JL Audio XD300/1v2. The diagram below shows the recommended crossover settings for the XD300/1v2. For a detailed description of the amplifier settings, consult the owner's manual for the amplifier. If another amplifier is being used, please reference this illustration and use similar settings on that amplifier.



## CONNECTIONS

Using quality power, signal, and speaker wire is essential in ensuring the performance of your Stealthbox®. JL Audio recommends using a 4 AWG power kit such as the XD-PCS4-1B for your Stealthbox® amplifier. Other kits are available should you be using more than one amplifier. Signal wire such as the JL Audio Premium Audio Interconnect Cables should be used to provide signal for both channels of the amplifier. JL Audio recommends using 12AWG speaker wire for subwoofers such as our XC-BCS12-25.



**STEP 1**  
Empty out the cargo area of the vehicle.



**STEP 2**  
Remove the subwoofer from the Stealthbox®, and place the enclosure into position inside the vehicle. Mark the mounting hole location on the plastic side panel, and remove the enclosure.



**STEP 3**  
Remove the cargo floor panel.



**STEP 4**  
Carefully unclip and remove the rear cargo sill panel.



**STEP 5**  
Unclip the screw cover panel behind the passenger side rear seat release handle, and remove the two screws. Remove the cargo net hook.



**STEP 6**  
Unbolt and remove the metal tie down hook at the rear of the passenger side panel.



**STEP 7**  
Remove the plastic snap at the base of the passenger side panel near the jack.



**STEP 8**  
Fold the rear seats forward. Carefully unclip and remove the passenger side seat bracket cover panel.





**STEP 9**

Pictured is the passenger side panel with the seat bracket cover panel removed.



**STEP 10**

Open the passenger side rear door. Carefully unclip and remove the lower door sill panel. Remove the screw under the panel.



**STEP 11**

Pictured is the rear floor with the sill panel removed.



**STEP 12**

Starting from the rear of the vehicle, carefully unclip the passenger side panel.



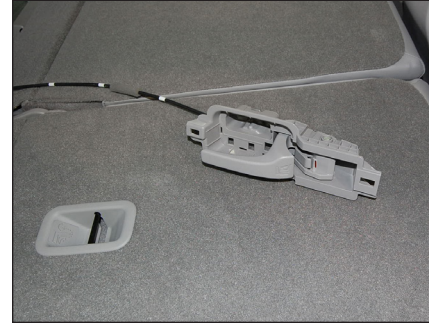
**STEP 13**

Continue toward the front of the vehicle, carefully unclipping the passenger side panel.



**STEP 14**

Remove the edge of the weatherstripping near the rear door latch, and remove the passenger side panel.



**STEP 15**

With the passenger side panel unclipped, remove the seat release handle and cable and set it aside. Remove the side panel from the vehicle.



**STEP 16**

Pictured is the passenger side of the vehicle with the side panel removed.



**STEP 17**

Two holes will need to be drilled into the side panel. Pictured are the locations for reference in **Steps 18-19**.



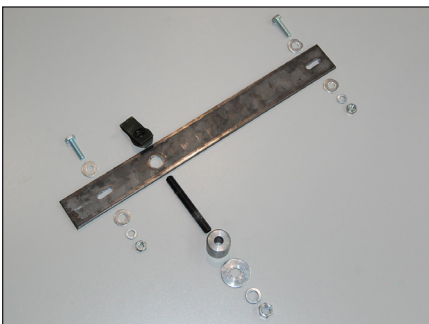
**STEP 18**

Using a 1/2" drill bit, drill a hole on the mark made in Step 2. This hole will be for the mounting hardware. On the backside of the panel, cut away the plastic rib just above the hole as shown.



**STEP 19**

Using a 3/8" drill bit, drill a hole at the top of the small raised section on the back of the panel as shown. This hole will be for the speaker cable.



**STEP 20**

Pictured is the included hardware. Reference this picture and the illustration on Page 2 for the assembly in **Steps 21-22**.



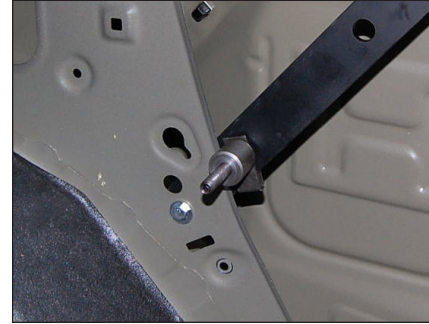
**STEP 21**

Locate the two holes indicated.



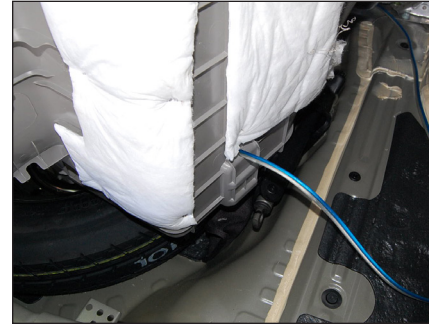
**STEP 22**

Slide a 1/4" Flat Washer over each 1/4 - 20 x 1" Hex Bolt, and slide an assembly through each hole indicated in Step 20. From behind the factory metal bracing, slide the Bracket over two 1/4 - 20 x 1" Hex Bolts, with the center hole toward the bottom. Secure the Bracket using a pair of 1/4" Lock Washers, 1/4" Flat Washers and 1/4 - 20 Hex Nuts.



**STEP 23**

Slide the 3/8 - 16 U-Nut over the Bracket and align it with the center hole. Thread the 3/8 - 16 x 3" Set Screw into the U-Nut, and slide the 1" OD x 3/8" ID x 1" Spacer over it as shown.



**STEP 24**

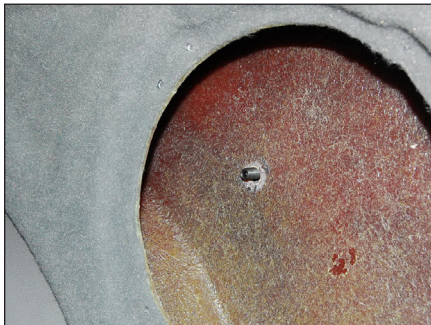
Route speaker cable as necessary and through the hole in the side panel drilled in **Step 19**.





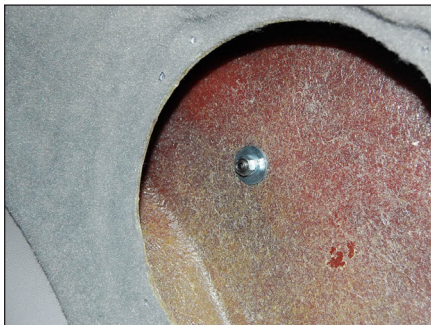
**STEP 25**

Reinstall the passenger side panel, allowing the 3/8 -16 x 3” Set Screw to pass through the hole made in **Step 18**.



**STEP 26**

Connect the speaker cable to the terminal cup on the back of the enclosure. Place the enclosure back into position, allowing the 3/8 - 16 x 3” Set Screw to pass through the hole in the back of the enclosure.



**STEP 27**

Slide a 3/8 x 1-1/4” Fender Washer, a 3/8” Lock Washer, and a 3/8 - 16 Nut over the 3/8 - 16 x 3” Set Screw and fully tighten.

Be sure the 3/8 -16 x 3” Set Screw does not protrude past the back of the 3/8” Nut more than 1/4”.



**STEP 27**

Reinstall the subwoofer.

**CONGRATULATIONS!**

You have completed the installation for this model! Enjoy your new Stealthbox®!



**MID/HIGH FREQUENCY DRIVER FITMENT**

A variety of JL Audio coaxial and component systems will fit in the factory speaker locations of your vehicle.

Front Speaker Size / Location: 6-1/2”- Front Doors  
 Fits JL Audio Models: TR650-CXi, TR650-CSi, C2-650x, C2-650, C3-650, C5-650x, C5-650, & ZR650-CSi

Rear Speaker Size / Location: 6-1/2”- Rear Door  
 Fits JL Audio Models: TR650-CXi, TR650-CSi, C2-650x, C2-650, C3-650, C5-650x, C5-650, & ZR650-CSi



**JL AUDIO** | How we play.™    

(954) 443-1100

[www.jlaudio.com](http://www.jlaudio.com)

All specifications are subject to change without notice. "JL Audio"™ and the JL Audio logo, "Stealthbox" and the Stealthbox logo are registered trademarks of JL Audio, Inc. "Ahead of the Curve" and its respective logo is a trademark of JL Audio, Inc.  
 Printed in USA • ©2016 JL Audio, Inc. • For more detailed information please visit us online at [www.jlaudio.com](http://www.jlaudio.com).