



# Stealthbox®

INSTALLATION GUIDE  
for the

**SB-POL-GNRLSPKR/MX650**

**SKU# 94657**

**2016 & Up Polaris General**

**Enclosure Type:** Sealed

**Driver Type:** MX650-CCX-SG-TLD-B

**Nominal Impedance:** 4 ohms

**Continuous Power Handling:** 60 watts (RMS method)

### ! IMPORTANT

If you choose to perform the installation yourself, it is absolutely vital that the Stealthbox® be properly mounted to the vehicle according to these instructions. Failure to mount the enclosure properly presents two problems:

- 1) The sub-bass performance will suffer due to the movement of the enclosure caused by the force exerted by the woofer(s).
- 2) A loose enclosure presents a serious safety hazard in the event of a collision or sudden deceleration.

INSTALLATION  
DIFFICULTY:

2 OUT OF 5

ESTIMATED TIME:  
1-2 HOURS



*Thank you for choosing a JL Audio Stealthbox® for your automotive sound system. With proper installation, your new vehicle-specific enclosed subwoofer system will deliver years of listening pleasure.*

*We strongly recommend that you have your new Stealthbox® installed by your authorized JL Audio dealer. The installation professionals employed by your dealer have the necessary tools and experience to disassemble and reassemble your vehicle properly. If you prefer to perform your own installation, please read this installation guide completely before beginning the process.*

**INCLUDED HARDWARE / WIRING INFORMATION**

(hardware pictured for one)

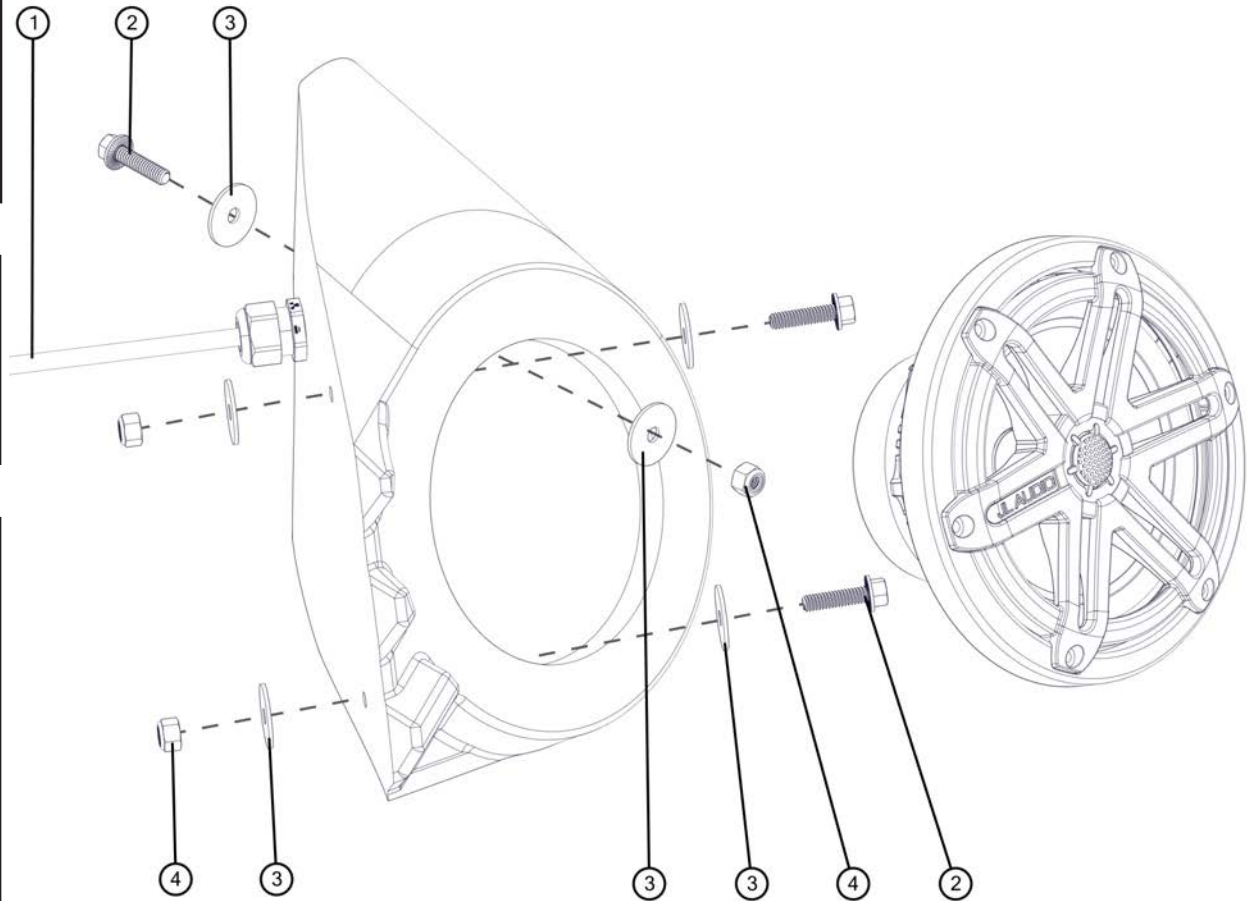
BOM ID	Qty	SKU	Description
1	2	152414	Wire Harness (10')
2	2	153729	1/4 - 20 x 1" Serrated Flange Head Bolt
3	2	153817	1/4" Stainless Steel Flat Washer
4	2	153815	1/4 - 20 Nylon Insert Locknut
-	1	150778	Fuse & Fuse Holder Kit (not shown)
-	1	150249	Foam Tape (not shown)

Wire Size	Wire Color	Use
16 AWG	Red/Stripe	Speaker Positive (+)
	Black/Stripe	Speaker Negative (-)
20 AWG	Red	Not Used
	Green	Not Used
	Blue	LED Positive (+)
	Yellow	LED Negative (-)

**LED Wire Connections**

Diagram shows one speaker pair of LED circuits connected in parallel.

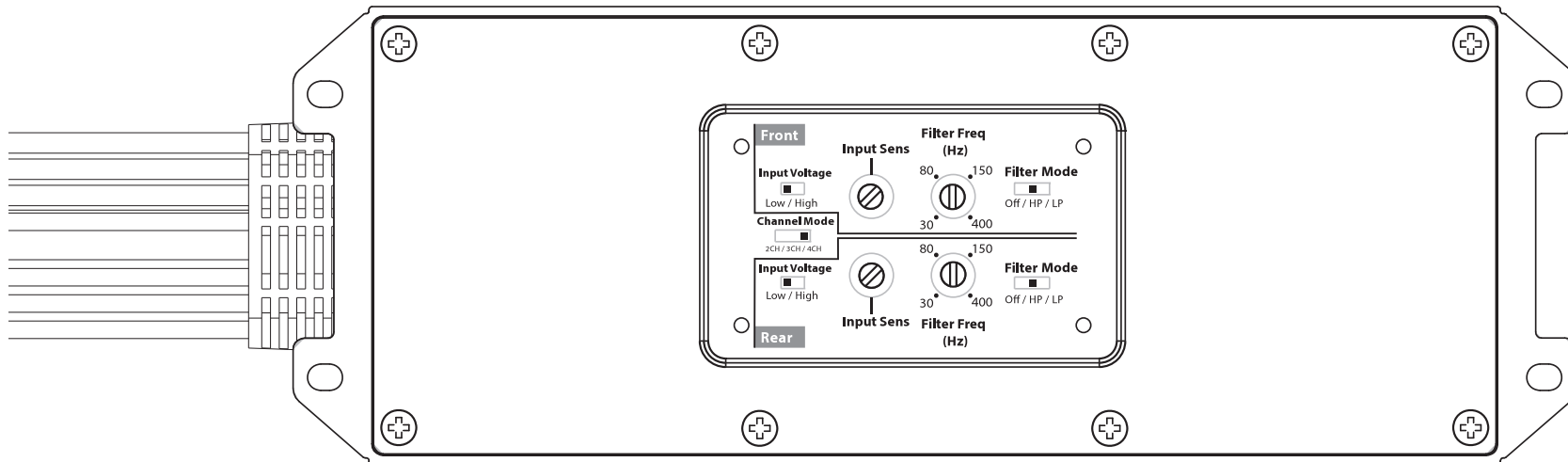
- For short-circuit protection, install a supplied fuse holder onto EACH speaker's BLUE (+12V) LED power connection lead.
- Connect all BLUE (+12V) leads together (parallel) and connect to a switched +12V supply. Connect all YELLOW (GRD) leads together and connect to a negative ground or to the NEGATIVE battery post.
- We recommend activating the speakers' LEDs thru a lighting circuit that supplies +12V via an existing switch. If an existing switched circuit is not available, you may install a dedicated toggle/rocker style switch that will supply positive (+12V) power. Fuse this connection according to how many LED circuits you have (LED circuits x 150A).



**Note: For optimum performance, JL Audio recommends applying the included Foam Strips (or sound damping material) to surrounding plastic panels to reduce unwanted vibrations.**

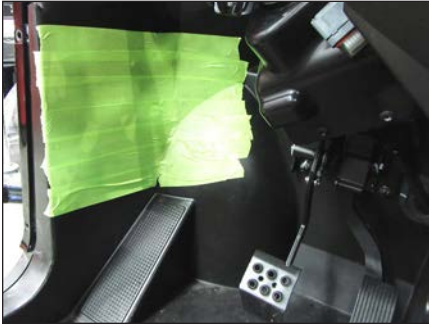
## POWER RECOMMENDATION

JL Audio recommends high quality amplifiers such as the JL Audio MX280/4. The diagram below shows the recommended crossover settings for the MX280/4. For a detailed description of the amplifier settings, consult the owner's manual for the amplifier. If another amplifier is being used, please reference this illustration and use similar settings on that amplifier.



## CONNECTIONS

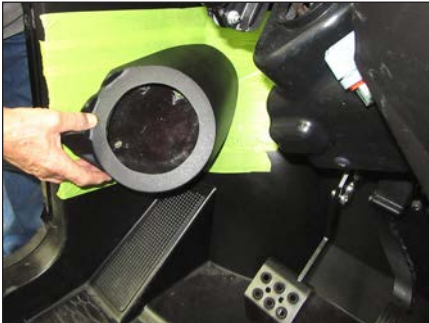
Using quality power, signal, and speaker wire is essential in ensuring the performance of your Stealthbox®. JL Audio recommends using a 4 AWG power kit such as the XD-PCS4-1B for your Stealthbox® amplifier. Other kits are available should you be using more than one amplifier. Signal wire such as the JL Audio Premium Audio Interconnect Cables should be used to provide signal for both channels of the amplifier. JL Audio recommends using 12 AWG speaker wire for subwoofers such as our XC-BCS12-25.



**STEP 1**

The following steps show the installation procedure for the driver's side only, but the procedure is the same for both sides.

Empty the driver's side of the vehicle, and mask the plastic panel in the kick panel area, as shown.



**STEP 2**

Place the speaker enclosure into position, flush against the kick panel, as shown.



**STEP 3**

Mark the location of each of the four holes in the speaker enclosure onto the masked panel. Note that one of the holes is larger than the other three.

Remove the speaker enclosure from the vehicle.

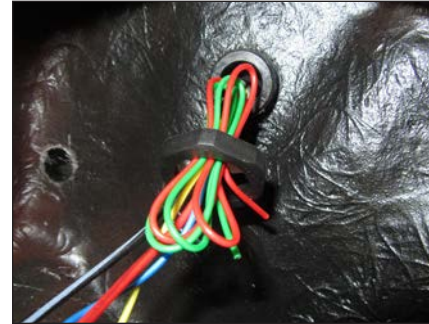


**STEP 4**

Using a 1/4" drill bit, carefully drill through the center of each of the marks made in the previous step.

Using a 1-1/8" hole saw, enlarge only the hole for the larger mark.

Remove the masking from the plastic panel.



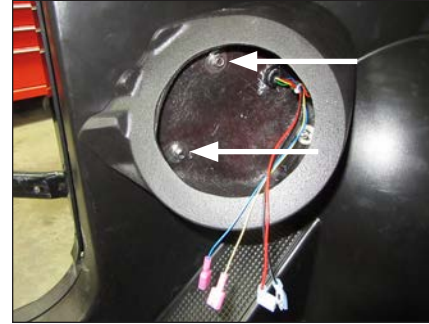
**STEP 5**

Pass the Wiring Harness into the enclosure through the larger hole. Slide the Seal Nut over the wiring, thread it over the pre-installed Liquid Tight Wire Seal, and fully tighten.



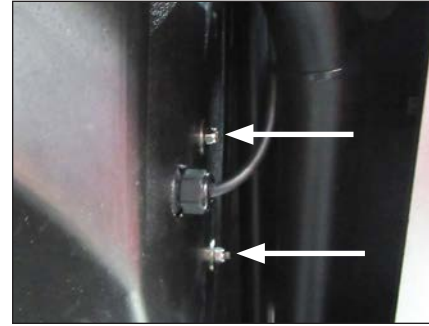
**STEP 6**

Pass the cable exiting the enclosure through the larger hole in the plastic panel. Position the speaker enclosure flush against the kick panel, allowing the grommet to sit in the drilled hole.



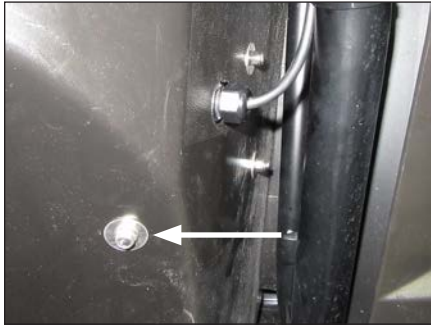
**STEP 7**

Slide a 1/4" Flat Washer over each of two 1/4 - 20 x 1" Serrated Flange Head Bolts. Pass an assembly through each of the two indicated holes in the enclosure and through the plastic panel to the outside of the vehicle.



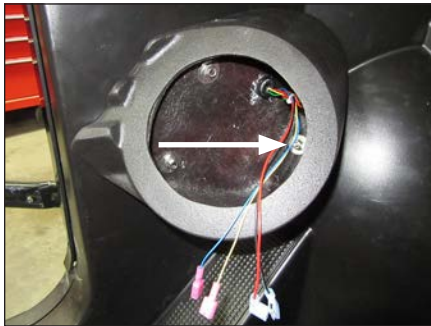
**STEP 8**

From the outside of the vehicle, slide a 1/4" Flat Washer and 1/4 - 20 Nylon Insert Locknut over each of the 1/4 - 20 x 1" Serrated Flange Head Bolts, and hand tighten.



**STEP 9**

Slide a 1/4" Flat Washer over a 1/4 - 20 x 1" Serrated Flange Head Bolt, and pass the assembly through the indicated hole in the plastic panel and into the enclosure.



**STEP 10**

Slide a 1/4" Flat Washer and 1/4 - 20 Nylon Insert Locknut over the 1/4 - 20 x 1" Serrated Flange Head Bolt, and fully tighten all three sets of hardware.

Route the cable as necessary. Refer to **Page 2** for wiring information.



**STEP 11**

Connect and install the speaker. Remove the adhesive backing, and install the JL Audio logo badge.

Repeat the process for the passenger side.

Note: For optimum performance, we recommend applying the included Foam Strips (or sound damping material) to surrounding plastic panels to reduce unwanted vibrations.

**CONGRATULATIONS!**

You have completed the installation for this model! Enjoy your new Stealthbox®!



**RECOMMENDED SUBWOOFER SOLUTIONS**

The SB-POL-GNRL/10TW3 Stealthbox® subwoofer enclosure is also available for your vehicle. The weatherproof enclosure is designed for a perfect fit and houses a premium JL Audio subwoofer.

**SB-POL-GNRL/10TW3  
SKU# 94656**



**JL AUDIO** | How we play.®    

(954) 443-1100

[www.jlaudio.com](http://www.jlaudio.com)

All specifications are subject to change without notice. "JL Audio" and "How we play" are registered trademarks of JL Audio, Inc. "Ahead of the Curve" and its respective logo are trademarks of JL Audio, Inc.  
Printed in USA • ©2017 JL Audio, Inc. • For more detailed information please visit us online at [www.jlaudio.com](http://www.jlaudio.com).

JLA-SKU# 011502 • ver. 12.05.2017 • 10369 NORTH COMMERCE PARKWAY • MIRAMAR, FLORIDA • 33025 • USA



\*011502\*