



Ahead of the Curve®



Stealthbox®

INSTALLATION GUIDE
for the

SB-POL-RXPC/10TW3

SKU# 94622

2015 & Up Polaris Ranger XP & Crew Cab

Enclosure Type: Sealed

Driver Type: 10TW3-D4

Nominal Impedance: 2 ohms

Continuous Power Handling: 400 watts (RMS method)

SB-POL-RXPC/10TW3 INSTR_SKU# 011448

! IMPORTANT

If you choose to perform the installation yourself, it is absolutely vital that the Stealthbox® be properly mounted to the vehicle according to these instructions. Failure to mount the enclosure properly presents two problems:

- 1) The sub-bass performance will suffer due to the movement of the enclosure caused by the force exerted by the woofer(s).
- 2) A loose enclosure presents a serious safety hazard in the event of a collision or sudden deceleration.

INSTALLATION
DIFFICULTY:

1 OUT OF **5**

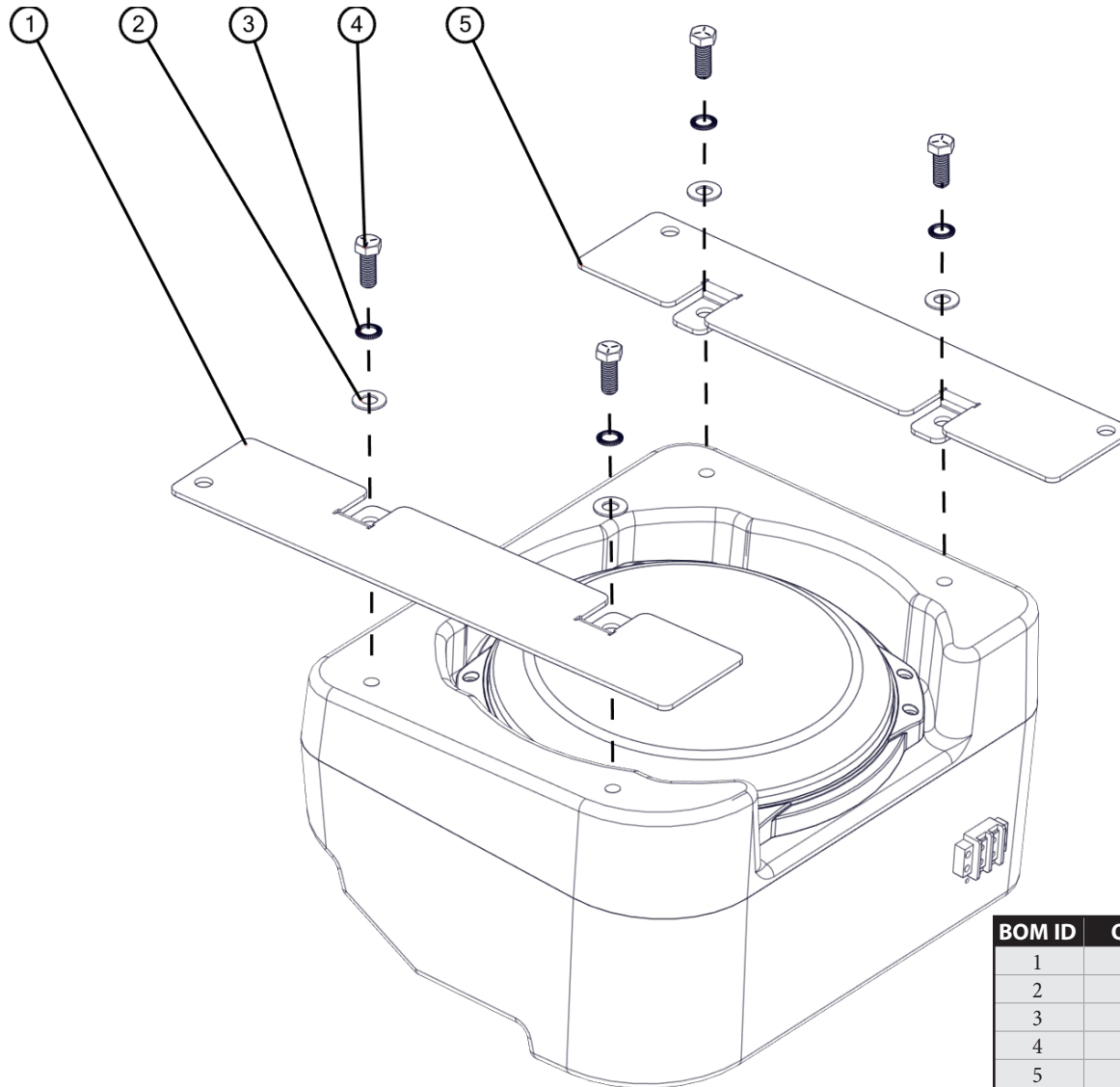
ESTIMATED TIME:
1/2 HOUR



Thank you for choosing a JL Audio Stealthbox® for your automotive sound system. With proper installation, your new vehicle-specific enclosed subwoofer system will deliver years of listening pleasure.

We strongly recommend that you have your new Stealthbox® installed by your authorized JL Audio dealer. The installation professionals employed by your dealer have the necessary tools and experience to disassemble and reassemble your vehicle properly. If you prefer to perform your own installation, please read this installation guide completely before beginning the process.

Continued on Next Page

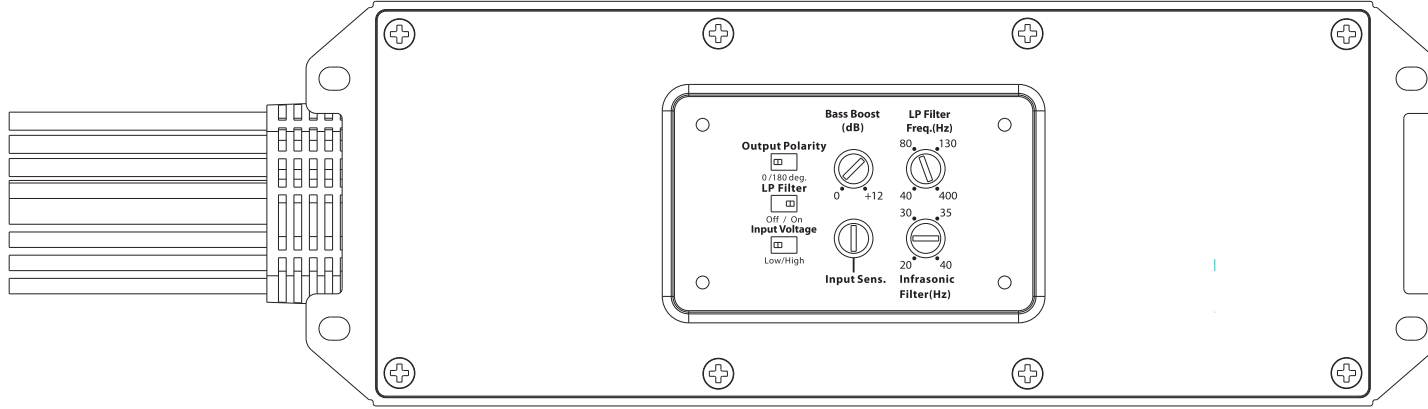
INCLUDED HARDWARE

BOM ID	Qty	SKU	Description
1	1	153681	Passenger Bracket
2	4	153737	3/8" Stainless Steel Flat Washer
3	4	153731	3/8" Stainless Steel Serrated Spring Lock Washer
4	4	153736	3/8 - 16 x 1" Stainless Steel Serrated Flange Bolt
5	1	153680	Driver Bracket
-	1	150249	Foam Strips (not shown)

Note: For optimum performance, JL Audio recommends applying the included Foam Strips (or sound damping material) to surrounding plastic panels to reduce unwanted vibrations.

POWER RECOMMENDATION

JL Audio recommends high quality amplifiers such as the JL Audio MX300/1. The diagram below shows the recommended crossover settings for the MX300/1. For a detailed description of the amplifier settings, consult the owner's manual for the amplifier. If another amplifier is being used, please reference this illustration and use similar settings on that amplifier.

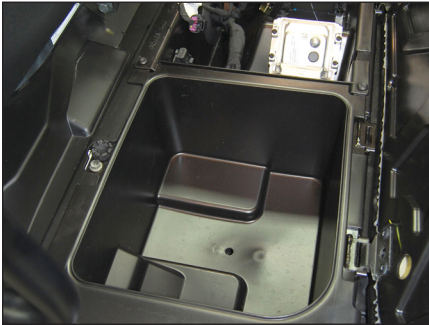


CONNECTIONS

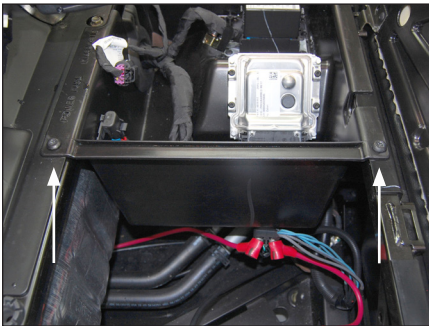
Using quality power, signal, and speaker wire is essential in ensuring the performance of your Stealthbox®. JL Audio recommends using an 8 AWG power kit such as the XD-PCS4-1B for your Stealthbox® amplifier. Other kits are available should you be using more than one amplifier. Signal wire such as the JL Audio Premium Audio Interconnect Cables should be used to provide signal for both channels of the amplifier. JL Audio recommends using 12AWG speaker wire for subwoofers such as the XC-BCS12-25.



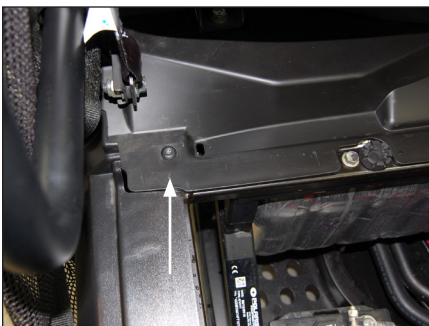
STEP 1
Empty the vehicle.



STEP 2
Fold the seat forward, and remove the plastic storage tray.



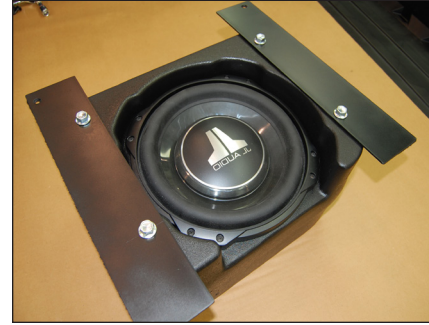
STEP 3
Locate and remove the two indicated factory bolts near the center of the vehicle.



STEP 4
Locate and remove the indicated factory bolt in the rear corner on the passenger side.

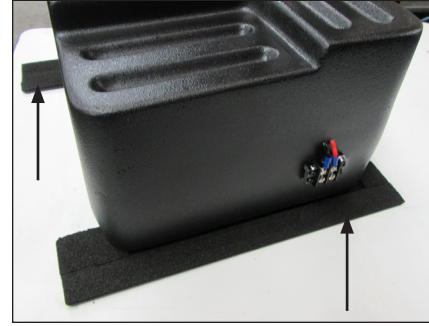


STEP 5
Place the Stealthbox® on a flat surface with the woofer facing up as shown. In this orientation, the left side of the enclosure is the passenger side.

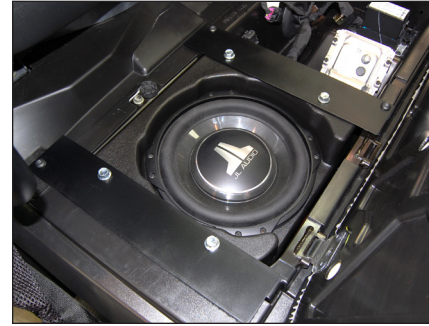


STEP 6
Attach the Passenger Bracket to the Stealthbox using a pair of 3/8 - 16 x 1" Serrated Flange Bolts, 3/8" Serrated Spring Lock Washers, and 3/8" Flat Washers as illustrated on **Page 2**.

Repeat the process for the Driver Bracket.



STEP 7
Flip the Stealthbox® over, and attach the Foam Strips to the exposed side of the Passenger Bracket and Driver Bracket as shown.



STEP 8
Attach speaker cable to the barrier strip on the enclosure. Place the Stealthbox® into position in the vehicle, and secure with the three factory bolts removed in **Steps 3-4**. Route the speaker cable as necessary.

**STEP 9**

Fold the seat back down.

Note: For optimum performance, we recommend applying the included Foam Strips (or sound damping material) to surrounding plastic panels to reduce unwanted vibrations.

CONGRATULATIONS!

You have completed the installation for this model! Enjoy your new Stealthbox®!

**MID/HIGH FREQUENCY DRIVER FITMENT**

VeX™ Enclosed Speaker Systems are ideal for powersports and off-road vehicle applications. Each weatherproof pod can be mounted to a roll cage precisely aimed for optimum sound. Mounting fixtures are available to fit a variety of roll cage diameters.



JL AUDIO® | How we play.®    

(954) 443-1100

www.jlaudio.com

All specifications are subject to change without notice. "JL Audio" and the JL Audio logo, and "Stealthbox" and the Stealthbox logo are registered trademarks of JL Audio, Inc. "Ahead of the Curve", its respective logo, and "How we play" are trademarks of JL Audio, Inc.
Printed in USA • ©2016 JL Audio, Inc. • For more detailed information please visit us online at www.jlaudio.com.

JLA-SKU# 011448 • ver. 09.16.2016 • 10369 NORTH COMMERCE PARKWAY • MIRAMAR, FLORIDA • 33025 • USA