

JL AUDIO[®]
A Garmin Brand



Stealthbox[®]
INSTALLATION GUIDE
for the

SBX-F-BRONCG6/10TW1
SKU# 94747
2021-Up Ford Bronco

Enclosure Type: Sealed

Driver Type: 10TW1-2

Nominal Impedance: 2 ohms

Continuous Power Handling: 300 watts (RMS method)

! IMPORTANT

- Installation requires appropriate tools and safety equipment. Professional installation is recommended.
- If you prefer to perform your own installation, please read this installation guide completely before beginning.
- Before cutting or drilling, check for potential obstacles behind mounting surfaces.
- Mount this product securely to prevent damage or injury in severe conditions.

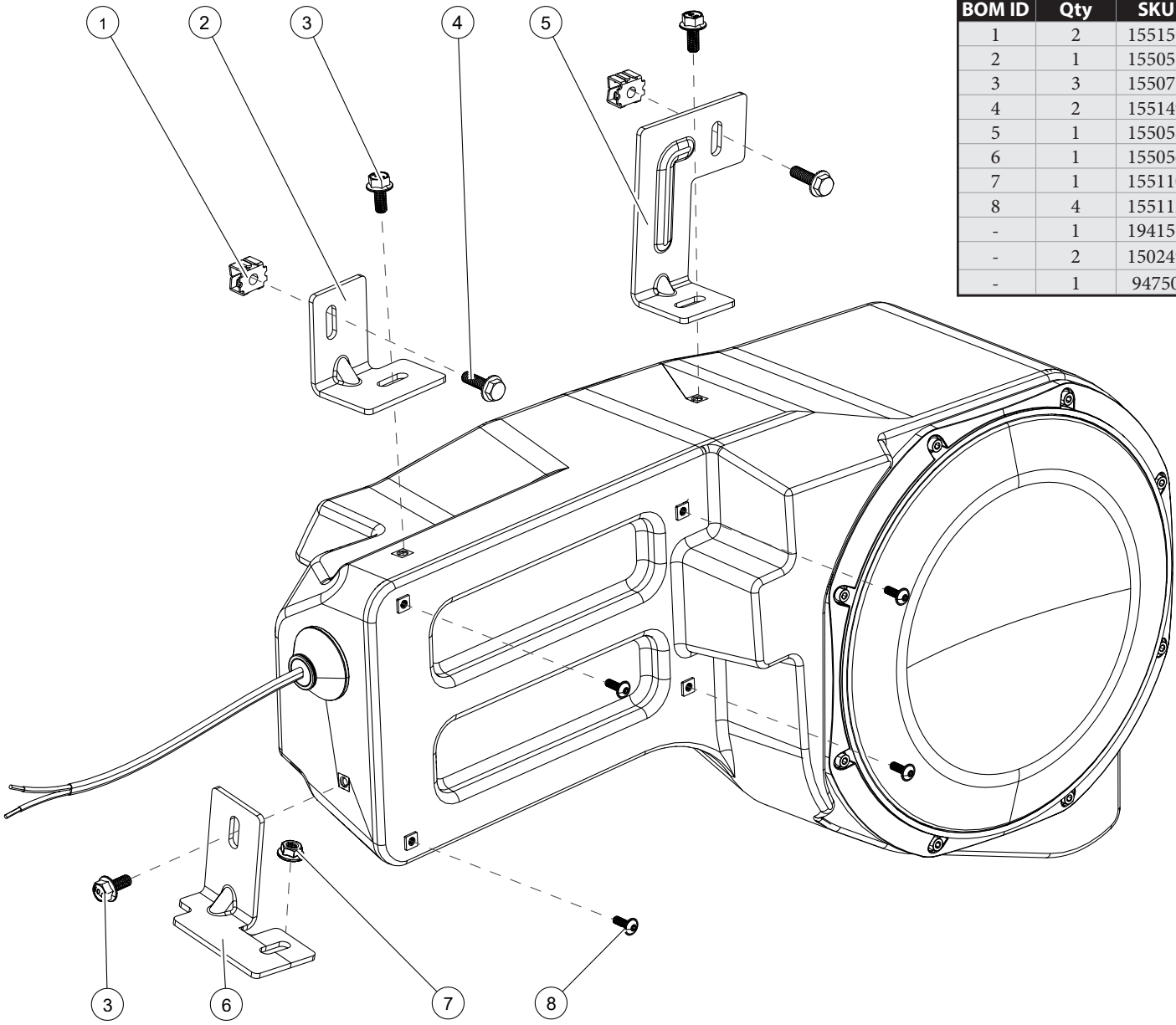
INSTALLATION
DIFFICULTY:

4 ^{OUT}
OF **5**

ESTIMATED TIME:
2 HOURS

JL AUDIO
~ Quality & Design ~
SBX
STEALTHBOX[®]

INCLUDED HARDWARE



BOM ID	Qty	SKU	Description
1	2	155150	M6 Panel Nut
2	1	155057	Top Front Bracket
3	3	155078	M6 x 14mm Flanged Hex Head Screw
4	2	155149	M6 x 20mm Serrated Flanged Hex Head Screw
5	1	155058	Top Rear Bracket
6	1	155056	Bottom Bracket
7	1	155110	M6 Serrated Flange Nut
8	4	155112	M4 x 12mm Flanged Button Head Screw
-	1	194157	Vibra-Tite 132 (not shown)
-	2	150249	Foam Tape (not shown)
-	1	94750	Universal SB Grille Assembly (not shown)



STEP 1
Empty the cargo area.



STEP 2
Carefully unclip the cargo tie-down cover panel, then remove the two screws.

Repeat for the other three tie-downs.



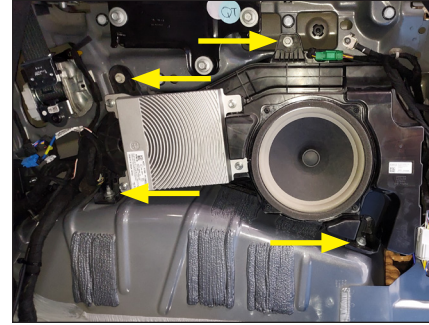
STEP 3
Carefully unclip and remove the bottom panel from the base of the rear seats. Unclip and remove the cargo sill panel, then remove the floor panel.



STEP 4
If equipped, remove the soft top latch striker and pillar trim panel from the top of the passenger side panel.

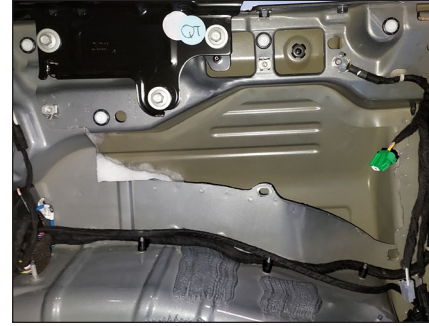


STEP 5
Carefully unclip and remove the rear door sill panel on the passenger side.

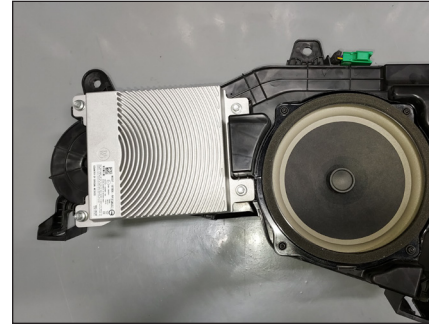


STEP 6
Carefully unclip the passenger rear side panel. Disconnect the attached harnesses and remove the panel.

If equipped, remove the two nuts and two screws from the factory subwoofer enclosure.

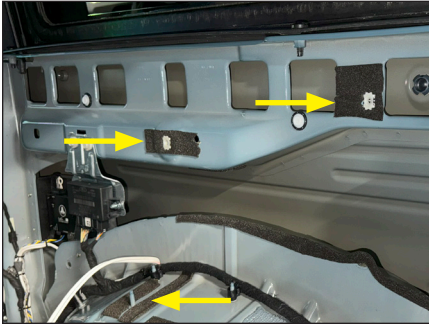


STEP 7
Disconnect the harnesses and remove the factory subwoofer enclosure.



STEP 8
Remove the four screws from the factory amplifier, and remove the amplifier from the factory subwoofer enclosure.

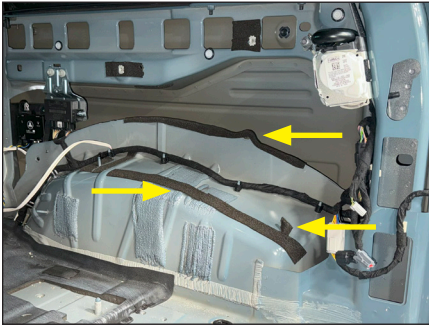
Apply Vibra-Tite 132 to four M4 x 12mm Flanged Button Head Screws, and install the factory amplifier onto the SBX enclosure.



STEP 9

Peel the adhesive backing and place Foam Tape strips at the three indicated SBX enclosure mounting locations.

For vehicles without a factory subwoofer, install an M6 Panel Nut into each of the upper mounting locations.



STEP 10

Peel the adhesive backing and place Foam Tape strips at the front and back of the cavity, as well as around the rear stud, as shown.



STEP 11

Apply Vibra-Tite 132 to an M6 x 14mm Flanged Hex Head Screw, pass it through the lower slot on the Top Front Bracket, into the threaded insert in the enclosure, as shown, and hand tighten.

Repeat the process for the Top Rear Bracket.



STEP 12

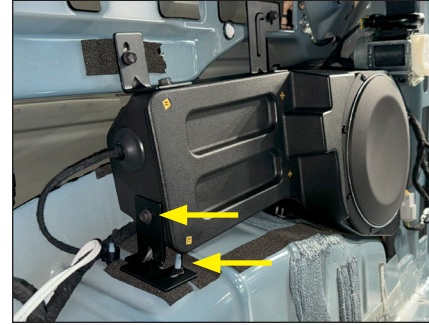
Place the enclosure into position, as shown. Route speaker cable as necessary.



STEP 13

Pass an M6 x 20mm Serrated Flanged Hex Head Screw through the upper slot in the Top Front Bracket, into the M6 Panel Nut, and hand tighten.

Repeat the process for the Top Rear Bracket.



STEP 14

Apply Vibra-Tite 132 to an M6 x 14mm Flanged Hex Head Screw, pass it through the upper slot in the Bottom Bracket, into the threaded insert in the enclosure, and hand tighten.

Thread an M6 Serrated Flange Locknut onto the factory stud, and hand tighten.

Push the enclosure completely back into the cavity, then fully tighten all the fasteners.



STEP 15

Lay the passenger rear side panel face down on a blanketed surface.



STEP 16

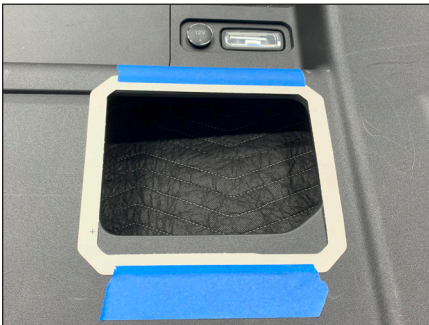
Carefully remove the nine plastic welds to detach and remove the grille from the panel.

Note: Do not drill through the panel.



STEP 17

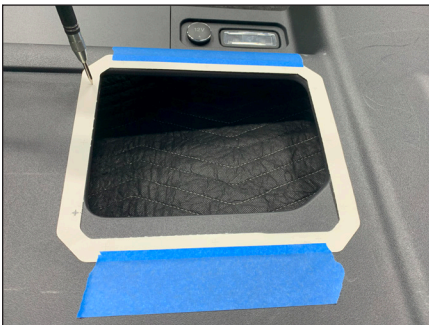
With the grille removed, carefully trim flush any remaining plastic weld material.



STEP 18

Flip the panel over. Carefully tear the Grille Template along its perforations, and position it on the passenger rear side panel, aligning the front and top edges of the Grille Template with the grille opening on the panel, as shown.

Secure the Grille Template with painter's tape.



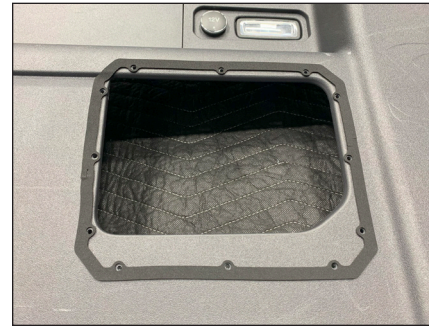
STEP 19

Using a punch or pick tool, carefully mark the hole locations through the Grille Template, onto the side panel.



STEP 20

Remove the Grille Template. Using a 1/8" drill bit, carefully drill through each of the locations marked in the previous step.



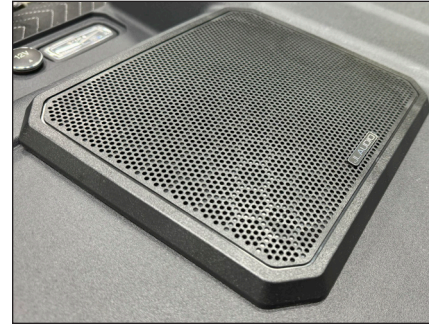
STEP 21

Clean the side panel. Peel the backing from the Grille Gasket, and carefully adhere it to the panel, aligning the holes in the Grille Gasket with the holes drilled in the previous step.



STEP 22

Position the Grille on the side panel, and secure using the nine M4.55 x 10mm Torx Plus Round Thread Forming Screws.



STEP 23

Peel the backing from the Grille Badge and press it onto the Grille in the desired position, then bend the tabs from the backside to secure.



STEP 24

If equipped, reconnect the amplifier. Reconnect the attached harnesses, then reinstall the passenger rear side panel. Reinstall the rear door sill panel, floor, cargo sill panel, bottom seat panel, and cargo tie downs. If equipped, reinstall the soft top latch striker and pillar trim panel.

CONGRATULATIONS!

You have completed the installation for this model! Enjoy your new Stealthbox®!



MID/HIGH FREQUENCY DRIVER FITMENT

A variety of JL Audio coaxial and component systems will fit in the factory speaker locations of your vehicle.

Location / OEM Speaker Size		Suggested JL Audio Speaker Models	
		Coaxial Models	Component Models
Front	Dash / 4-inch	C1-400x, C2-400x	C7-350cm ⁽¹⁾
	Kick Panel / 6.5-inch	C1-650x, C2-650x	C1-650, C2-650, C3-650, C6-650cw ⁽²⁾ , C7-650cw ⁽²⁾
Rear	Pillar / 4-inch	C1-400x, C2-400x	C7-350cm ⁽¹⁾

1 - Installation may require adaptor, 2 - Component woofer only

JL AUDIO® | How we play.®

(954) 443-1100 | www.jlaudio.com

Please review the warranty information included with each product for details. Warranty is valid only if the product was purchased from an Authorized JL Audio Dealer. Authorized dealer status can be verified with the Dealer Locator on www.jlaudio.com. International Warranty: Please contact your country's JL Audio distributor for specific warranty details. © Garmin Ltd. or its subsidiaries. All rights reserved. - Garmin, JL Audio, Stealthbox, and How we play, are trademarks of Garmin Ltd. or its subsidiaries and are registered in one or more countries, including the U.S. The JL Audio logo, the How we play logo, the Stealthbox logo, and the SBX logo are trademarks of Garmin Ltd. or its subsidiaries. Product images shown are for illustrative purposes only and may differ from the actual product. Due to continuous product development, all specifications are subject to change without notice.

