

KICKER®

51LX850.1

850 Watt Mono Class D Sub Amp; w/Smart Bass

Specifications

Electrical Parameters

Power (@14.4V, <1%THD+N)	4Ω	300W x 1
Power (@14.4V, <1%THD+N)	2Ω	500W x 1
Power (@14.4V, <1%THD+N)	1Ω	850W x 1
Dynamic Power (@14.4V, <10%THD+N)	1Ω	1100W
Lowest Rated Impedance		1Ω
Signal to Noise Ratio (CEA)	1W	>-75dB
Signal to Noise Ratio	Rated Power	>-95dB
CMRR	50Hz	-40dB
Input Impedance		>20kΩ
Frequency Response		10Hz - 160Hz
Variable LoPass Filter	24dB / Octave LR	40Hz - 160Hz
Variable Subsonic Filter	24dB / Octave LR	10Hz - 80Hz
KickEQ+™ Variable Bass Boost		0dB - 6dB
KickEQ+™ Variable Center Frequency		20Hz - 80Hz
KickEQ+™ Variable Bandwidth		1 - 5
Standby Current (Remote Off)		<2mA
Idle Current (Remote On)		<3A
Current Draw (Rated Power)		<80A
Remote Gain Attenuation (LXRC Included)		-26dB - 0dB
Low Level Input Sensitivity		125mV - 5V
High Level Input Sensitivity		1V - 40V
Under Voltage Protection		6.5V (warning at 10.5V)
Over Voltage Protection		16.5V (warning at 16V)
Active Thermal Management		>75°C

What's in the box?

51LX850.1
LX Mono Customer Information Card
LX Remote Control with Cable
Mounting Hardware
3mm Hex Key
Power Wire Cable Chart
Birth Certificate
High level Input Harness (CEA Color Standard)

Physical Materials

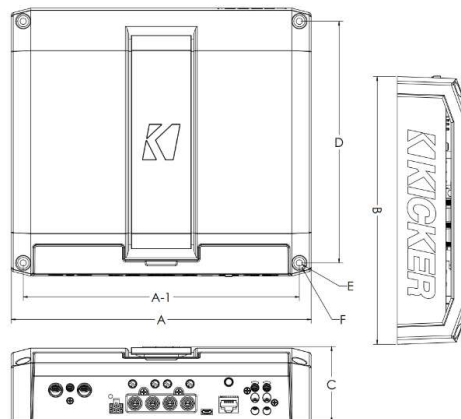
Heat Sink	Powder Coated Cast Aluminum
End Panel	Painted Injection Molded ABS Plastic
Bottom Panel	Powder Coated Stamped Steel
Center Panel	Powder Coated Stamped Steel
Control Panel Cover	Painted Injection Molded ABS Plastic
LX Remote Control	Painted Injection Molded ABS Plastic



Features

- SHOCwave2.0™ Restores Bass in Digital Recordings
- Customize the Appearance with Reversible Center Panel
- 1-Ohm Stable for Ultimate Flexibility with Most Subwoofer Wiring Options
- Active Thermal Management for All-Day Play Time
- Unique RGB Dimmable Amp Top Plate and Bass Remote
- LED Illuminated Gain Knob with Clip Indicator
- KickEQ+™ Parametric Bass Boost
- FIT+™ Differential Inputs - Near Universal Compatibility with Source Units

Unit Dimensions

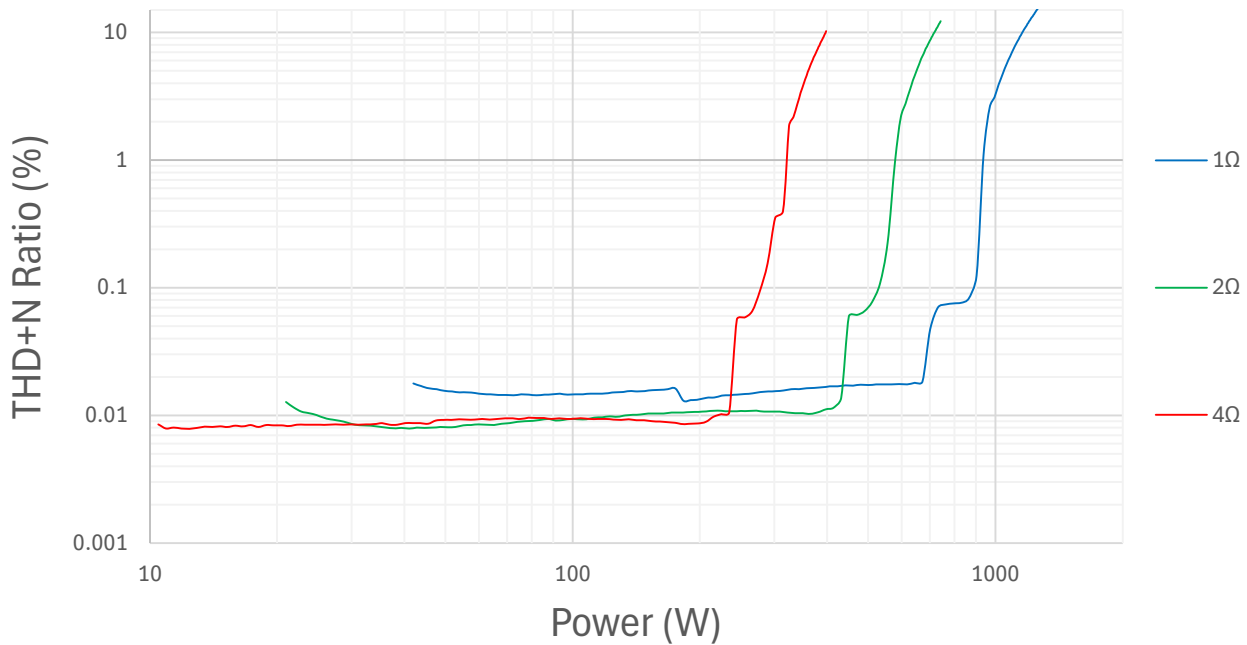


A - Overall Length	9-7/16"	240.0mm
A-1 - Mounting Holes Location - Length	8-11/16"	221.0mm
B - Overall Width	8-7/16"	214.0mm
C - Overall Height	2-3/8"	60.2mm
D - Mounting Holes Location - Width	7-5/8"	193.0mm
E - Mounting Hole Inner Diameter	3/16"	5.0mm
F - Mounting Hole Outer Diameter	3/8"	9.0mm

Technical Graph Data

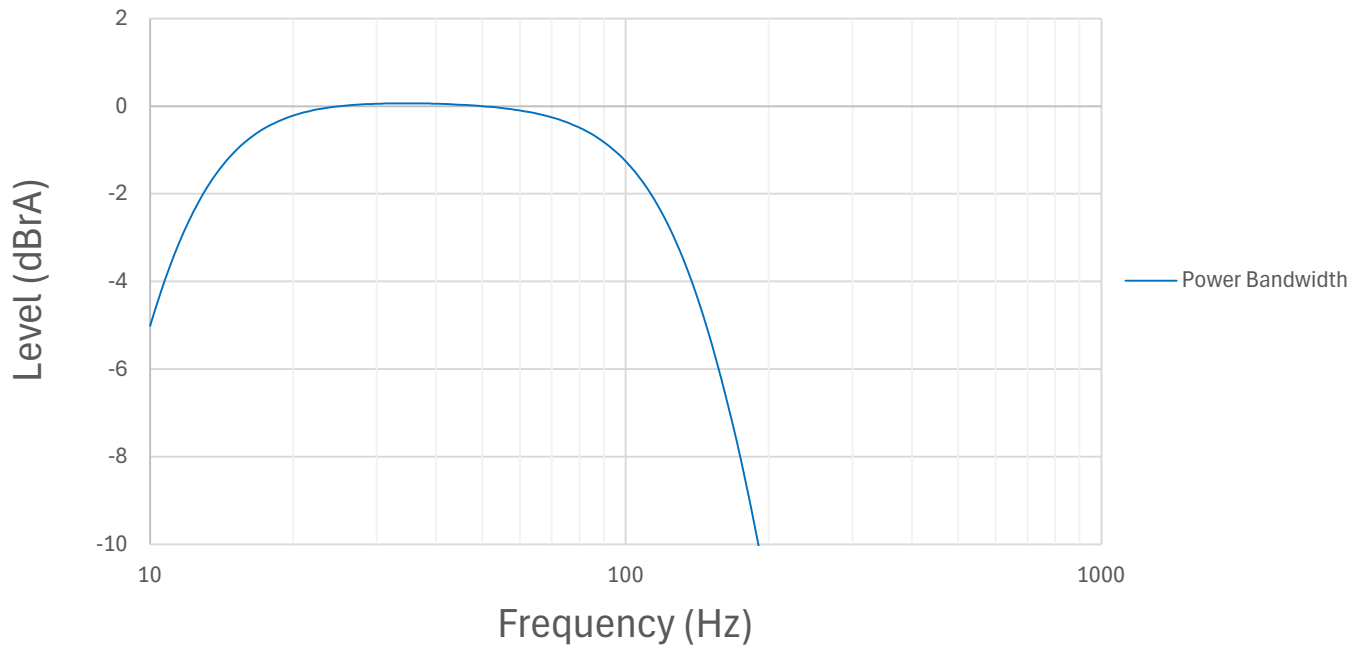
THD+N vs. Power (W) @14.4VDC

THD+N Ratio (%) vs. Power (W)



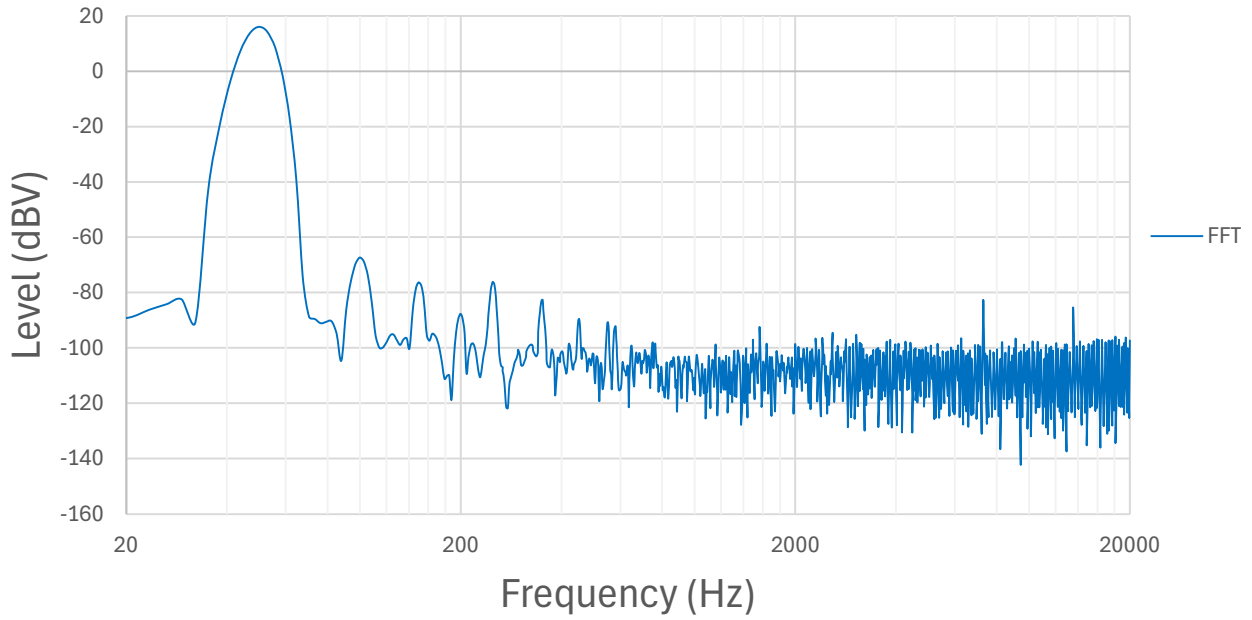
Power Bandwidth (4Ω) @14.4VDC

Power Bandwidth, re: Rated Power (300W @ 4Ω)



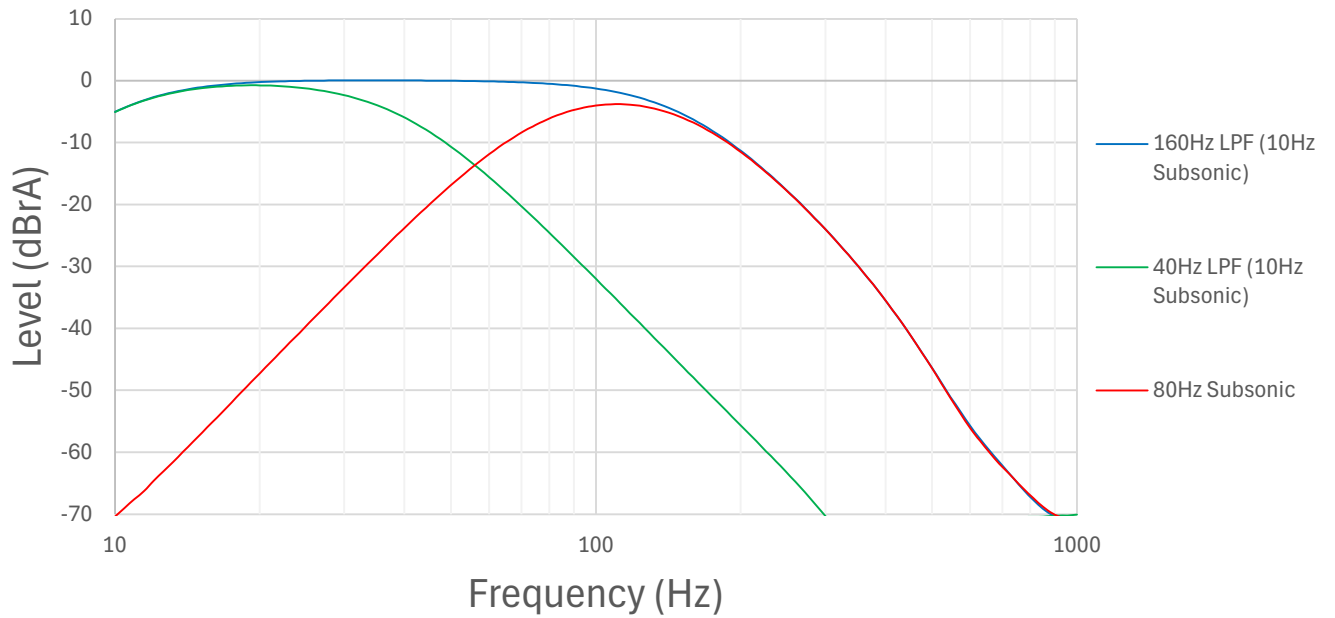
FFT

FFT (50Hz Signal)



Crossover Frequency Response

Crossover Frequency Response



KickEQ+™

