

# KICKER®

51LX1200.5

4x125 Watt 4-ch. Full Range Class D Amp w/700 Watt Class D Sub Amp Ch.

## Specifications

### Electrical Parameters

Power (@14.4V, <1%THD+N)	<b>4Ω Stereo</b>	125W x 4
Power (@14.4V, <1%THD+N)	<b>2Ω Stereo</b>	175W x 4
Power (@14.4V, <1%THD+N)	<b>4Ω Bridged</b>	350W x 2
Power (@14.4V, <1%THD+N)	<b>4Ω Mono</b>	300W x 1
Power (@14.4V, <1%THD+N)	<b>2Ω Mono</b>	550W x 1
Power (@14.4V, <1%THD+N)	<b>1Ω Mono</b>	700W x 1
Dynamic Power (@14.4V, <10%THD+N)	<b>4Ω Bridged + 1Ω Mono</b>	1500W
Lowest Rated Impedance - (Amp 1 & 2)		2Ω Stereo / 4Ω Bridged
Lowest Rated Impedance - (Sub)		1Ω
Signal to Noise Ratio (CEA)	<b>1W</b>	>-75dB
Signal to Noise Ratio	<b>Rated Power</b>	>-95dB
Channel Separation (Rated Power) FR	<b>1000Hz</b>	>55dB
CMRR (Amp 1 & 2)	<b>1000Hz</b>	-40dB
CMRR (Sub)	<b>50Hz</b>	-40dB
Input Impedance		>20kΩ
Frequency Response (Amp 1 & 2)		20Hz - 20kHz
Frequency Response (Sub)		10Hz - 160Hz
Variable HiPass Filter (Amp 1 & 2)	<b>12/18/24BW 12/24LR</b>	20Hz - 5kHz
Variable LoPass Filter (Amp 1 & 2)	<b>12/18/24BW 12/24LR</b>	40Hz - 5kHz
Variable BandPass Filter (Amp 1 & 2)	<b>12/18/24BW 12/24LR</b>	20Hz - 5kHz
Variable LoPass Filter (Sub)	<b>12/18/24BW 12/24LR</b>	40Hz - 160Hz
Variable Subsonic Filter (Sub)	<b>12/18/24BW 12/24LR</b>	10Hz - 80Hz
KickEQ+™ Variable Bass Boost (Sub)		0dB - 6dB
KickEQ+™ Variable Center Frequency (Sub)		20Hz - 80Hz
KickEQ+™ Variable Q (SUB)		1 - 5
Standby Current (Remote Off)		<2mA
Idle Current (Remote On)		<3A
Current Draw (Rated Power)		<100A
Remote Gain Attenuation (LXRC Included)		-26dB - 0dB
Low Level Input Sensitivity		125mV - 5V
High Level Input Sensitivity		1V - 40V
Under Voltage Protection		6.5V (warning at 10.5V)
Over Voltage Protection		16.5V (warning at 16V)
Active Thermal Management		>75°C

### What's in the box?

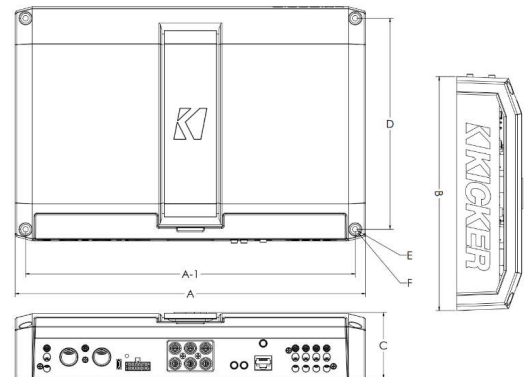
51LX1200.5
LX Multi-Channel Customer Information Card
LX Control Center
LX Remote Control with Cable
Mounting Hardware
3mm Hex Key
Power Wire Cable Chart
Birth Certificate
High level Input Harness (CEA Color Standard)



### Features

- SHOCwave2.0™ Restores Bass in Digital Recordings
- Customize the Appearance with Reversible Center Panel
- DSP Functionality with LX Control Center to Dial In Your Sound
- 1-Ohm Stable for Ultimate Flexibility with Most Subwoofer Wiring Options
- Active Thermal Management for All-Day Play Time
- Unique RGB Dimmable Amp Top Plate and Bass Remote
- LED Illuminated Gain Knob with Clip Indicator
- KickEQ+™ Parametric Bass Boost
- FIT+™ Differential Inputs - Near Universal Compatibility with Source Units

### Unit Dimensions



A - Overall Length	<b>12-5/8"</b>	<b>320.0mm</b>
A-1 - Mounting Holes Location - Length	<b>11-7/8"</b>	<b>301.0mm</b>
B - Overall Width	<b>8-7/16"</b>	<b>214.0mm</b>
C - Overall Height	<b>2-3/8"</b>	<b>60.2mm</b>
D - Mounting Holes Location - Width	<b>7-5/8"</b>	<b>193.0mm</b>
E - Mounting Hole Inner Diameter	<b>3/16"</b>	<b>5.0mm</b>
F - Mounting Hole Outer Diameter	<b>3/8"</b>	<b>9.0mm</b>

### Physical Materials

Heat Sink	Powder Coated Cast Aluminum
End Panel	Painted Injection Molded ABS Plastic
Bottom Panel	Powder Coated Stamped Steel
Center Panel	Powder Coated Stamped Steel
Control Panel Cover	Painted Injection Molded ABS Plastic
LX Control Center	Painted Injection Molded ABS Plastic
LX Remote Control	Painted Injection Molded ABS Plastic

# Technical Graph Data

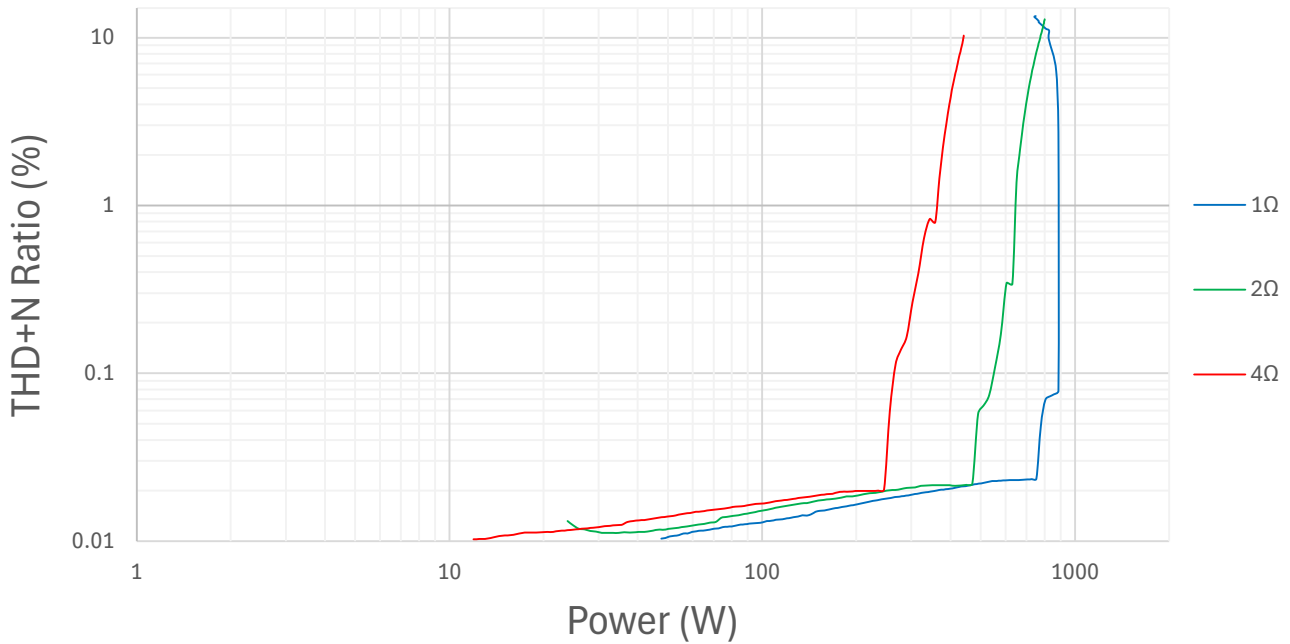
## AMP1 and AMP2 - THD+N vs. Power (W) @14.4VDC

### THD+N Ratio (%) vs. Power (W)



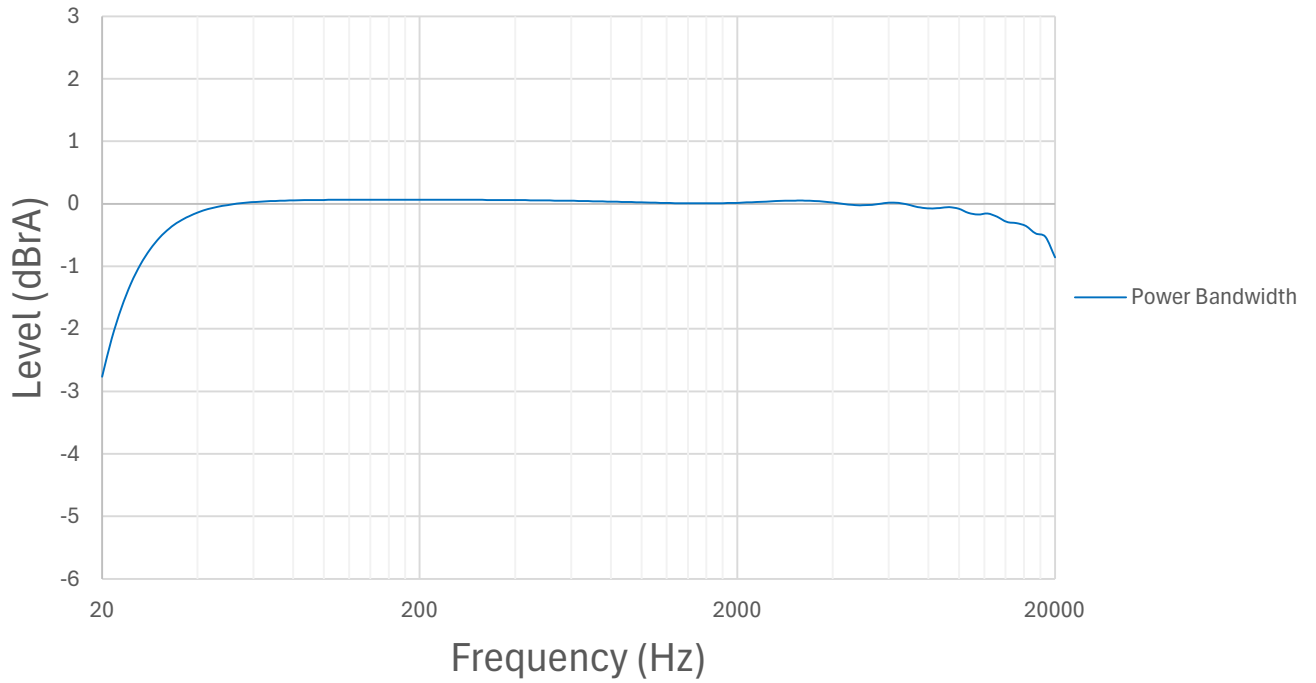
## SUB - THD+N vs. Power (W) @14.4VDC

### THD+N Ratio (%) vs. Power (W)



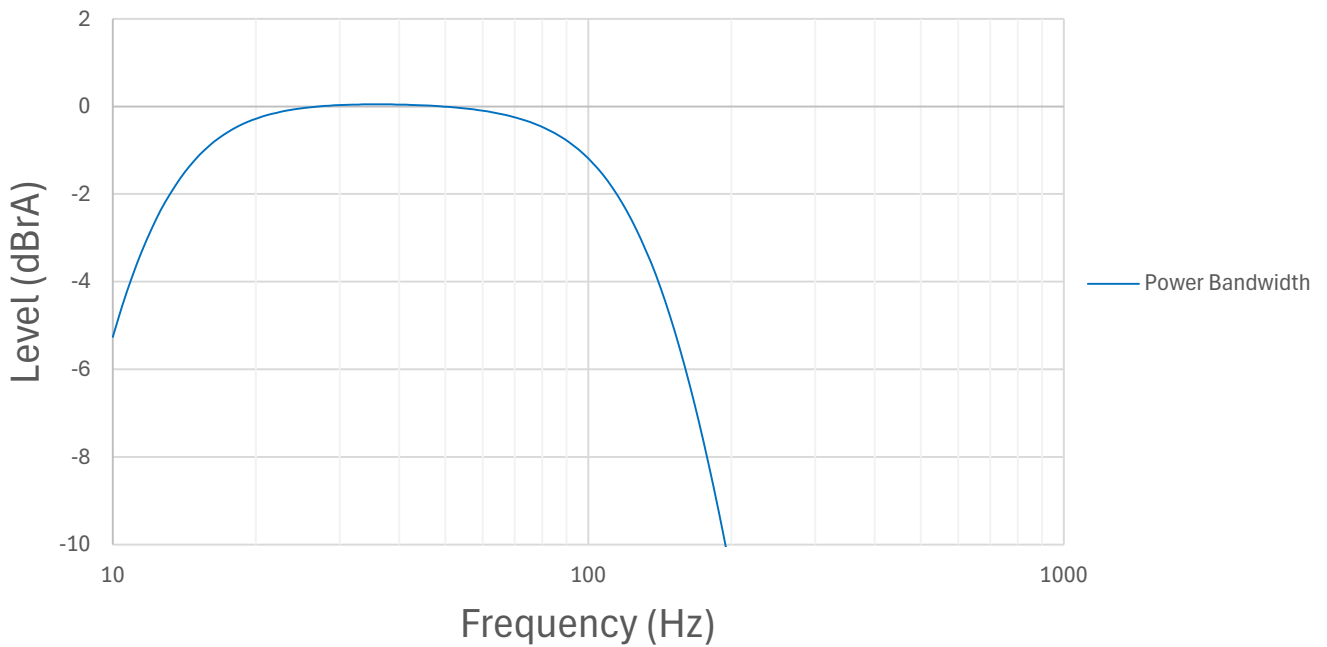
## AMP1 and AMP2 - Power Bandwidth (4Ω) @14.4VDC

Power Bandwidth, re: Rated Power (125W @ 4Ω)

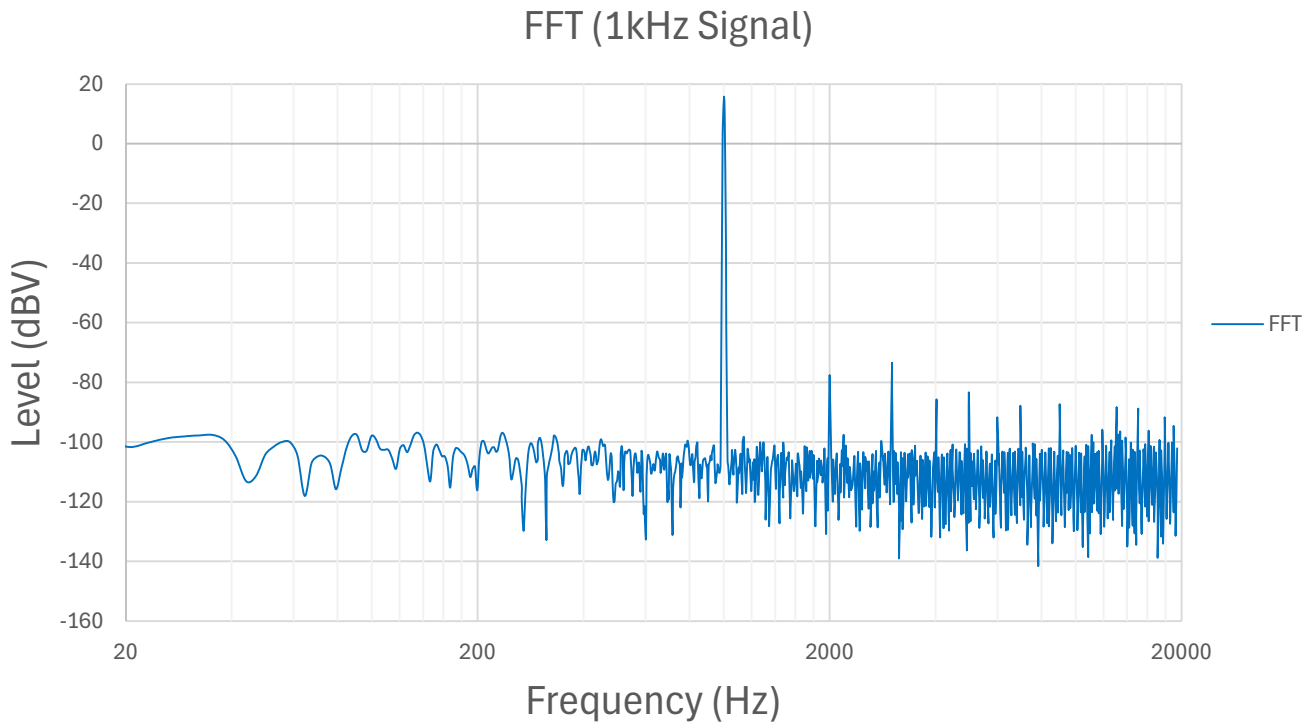


## SUB - Power Bandwidth (4Ω) @14.4VDC

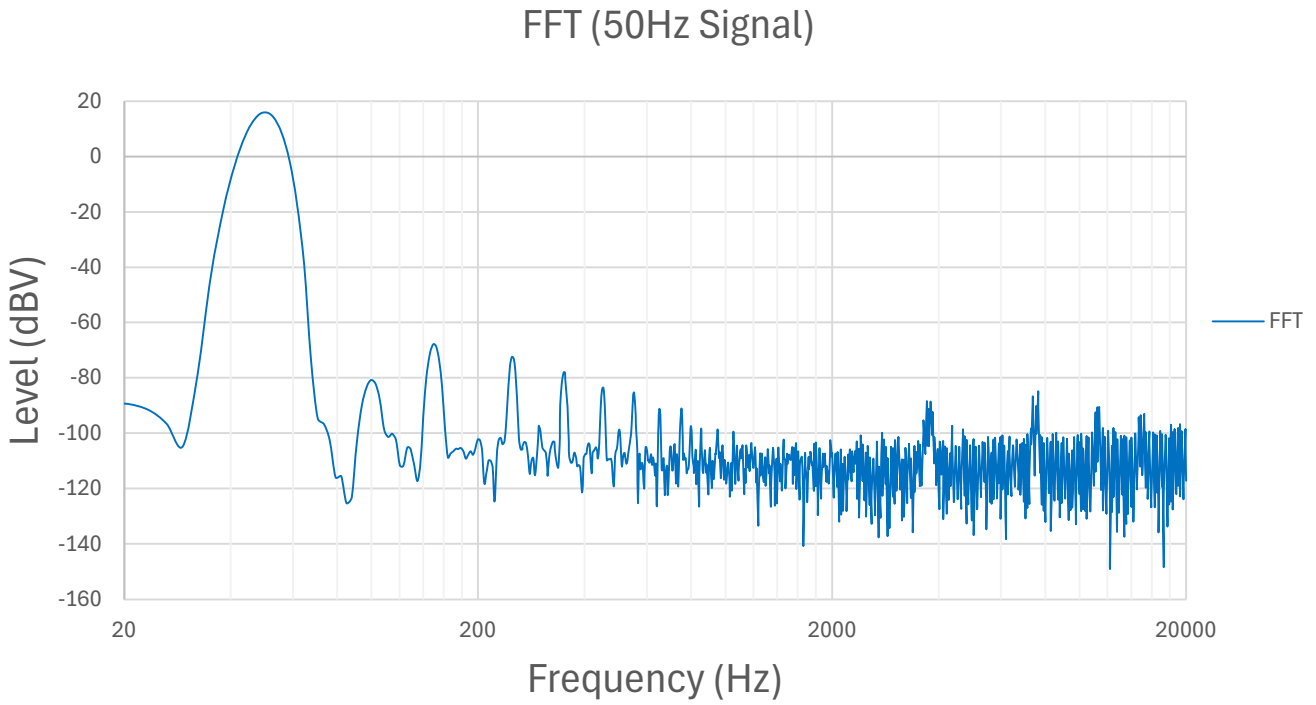
Power Bandwidth, re: Rated Power (300W @ 4Ω)



## AMP1 and AMP2 - FFT

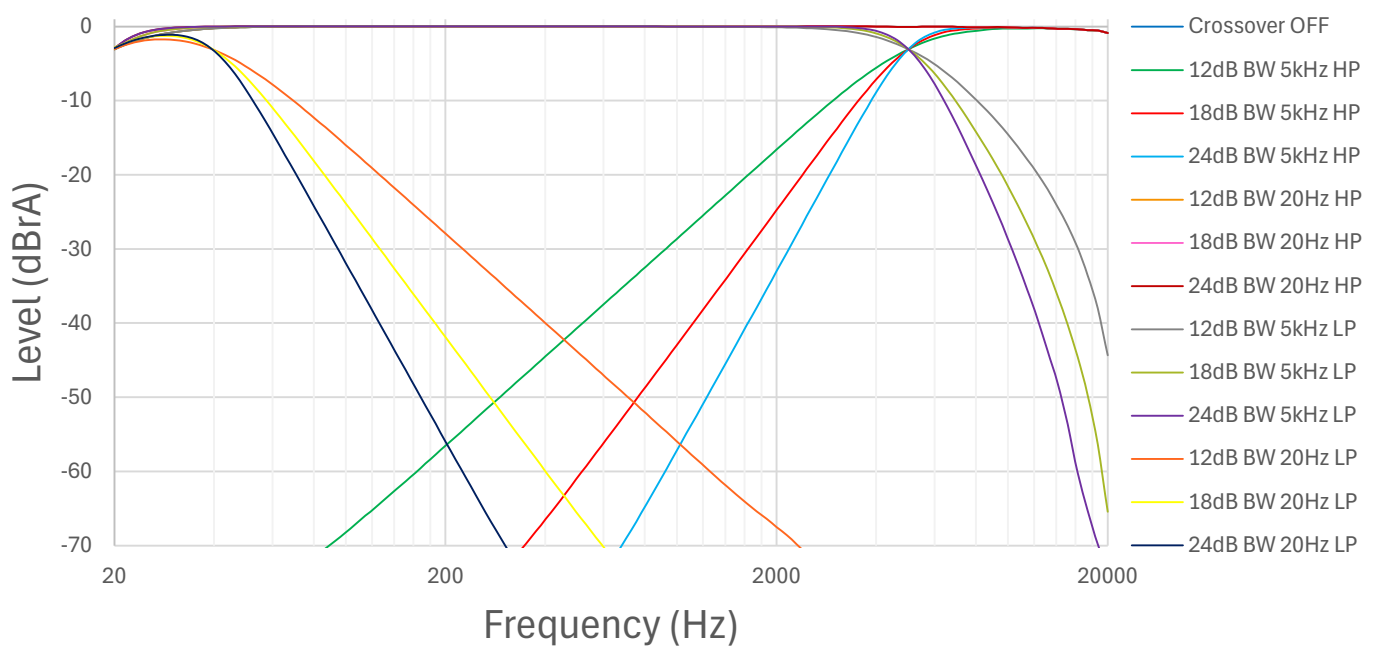


## SUB - FFT



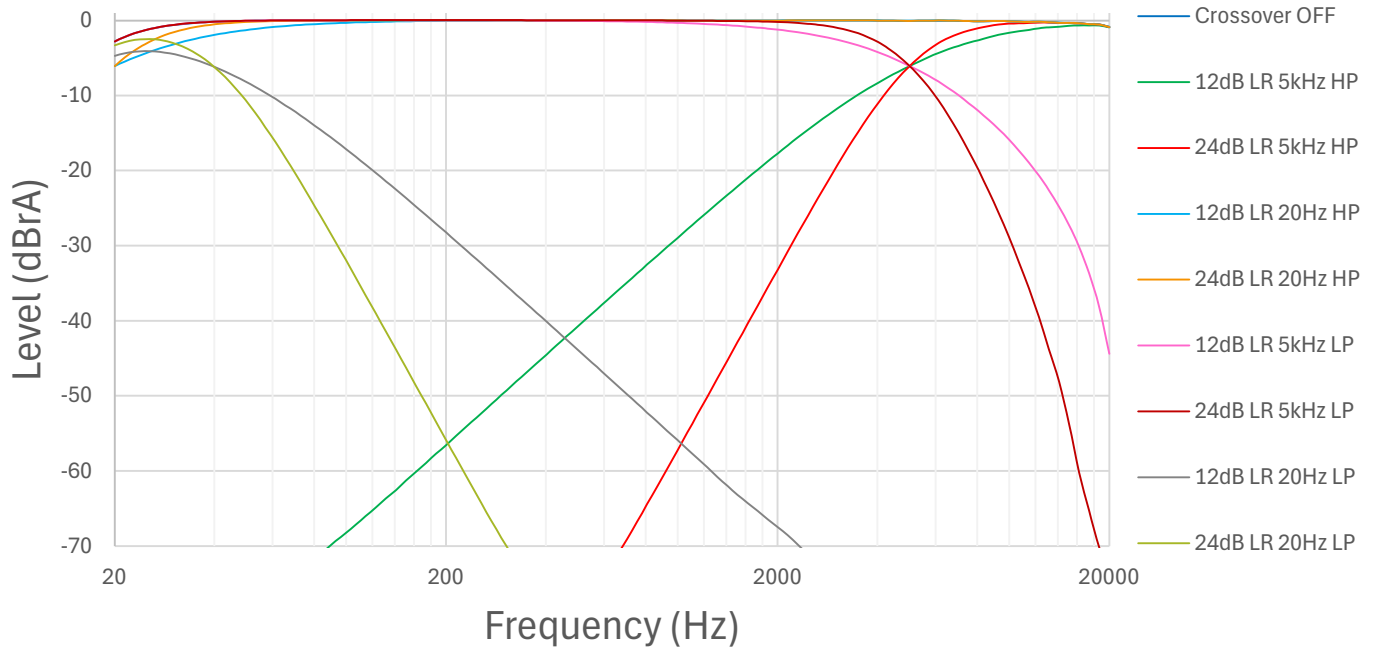
# AMP1 and AMP2 Butterworth Crossover Frequency Response

AMP1 and AMP2 Butterworth Crossover Frequency Response



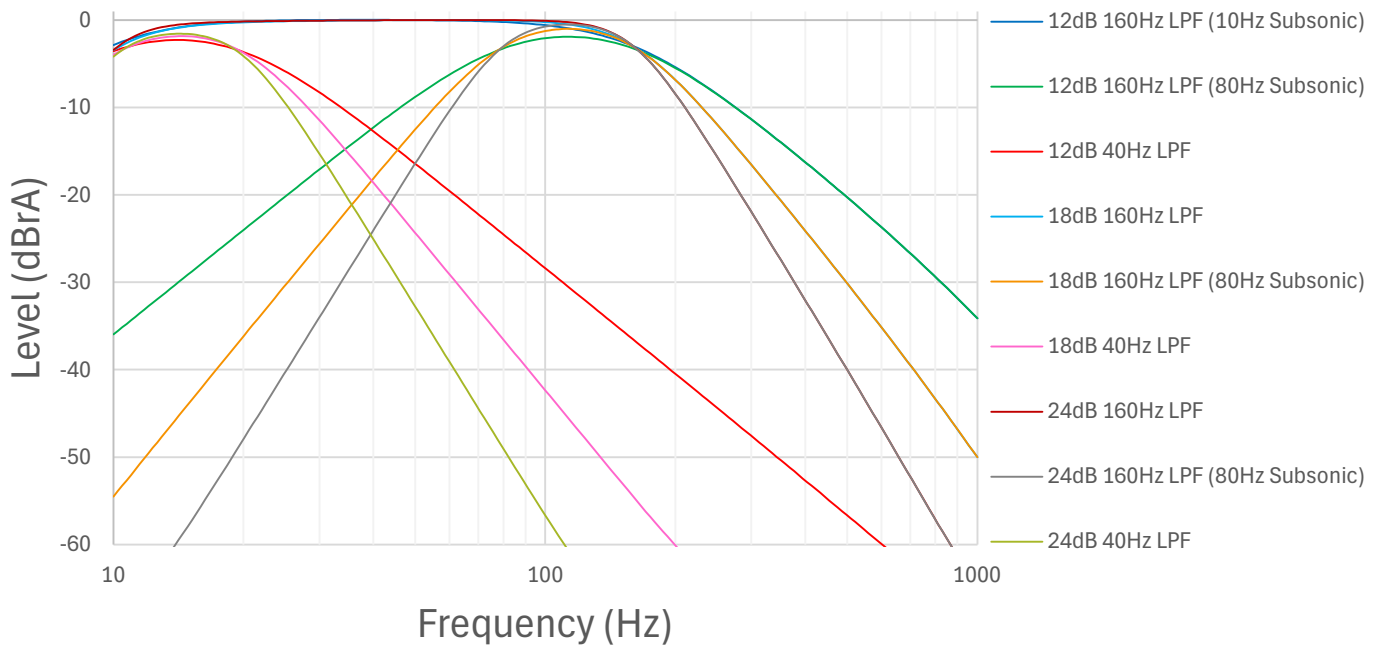
# AMP1 and AMP2 Linkwitz-Riley Crossover Frequency Response

AMP1 and AMP2 Linkwitz-Riley Crossover Frequency Response



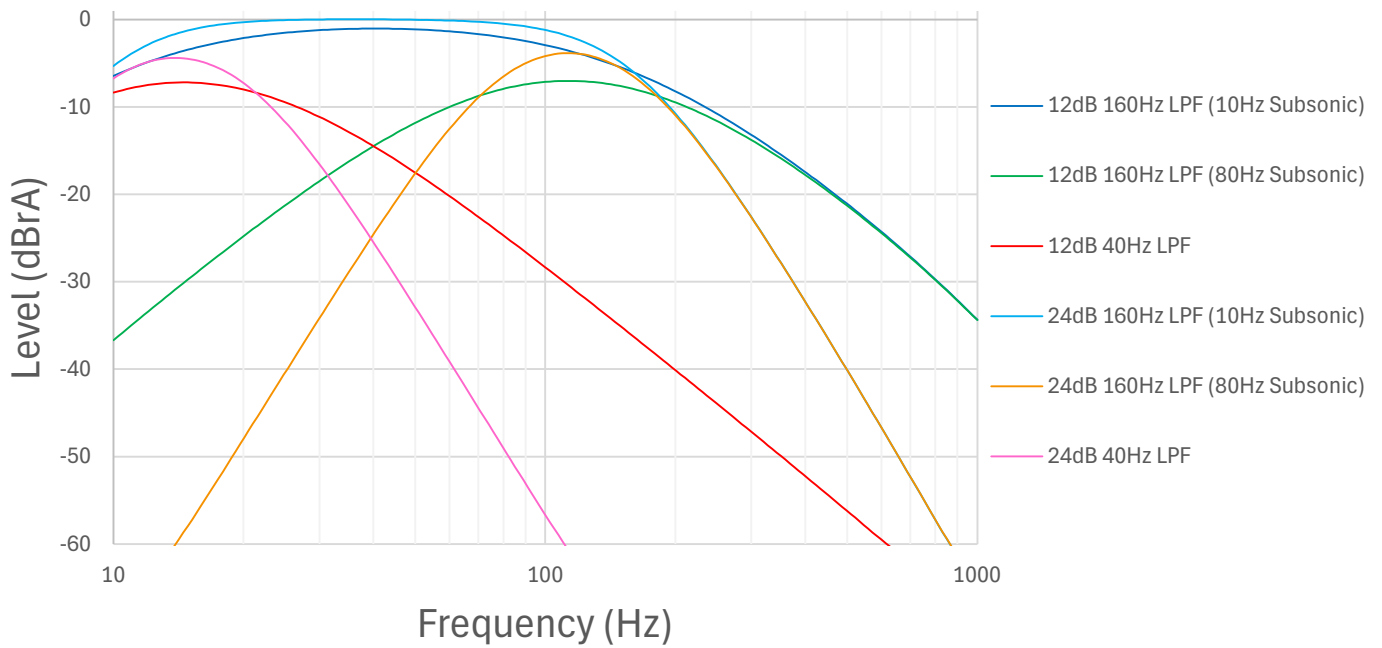
# SUB Butterworth Crossover Frequency Response

SUB Butterworth Crossover Frequency Response



# SUB Linkwitz-Riley Crossover Frequency Response

SUB Linkwitz-Riley Crossover Frequency Response



KickEQ+™

