

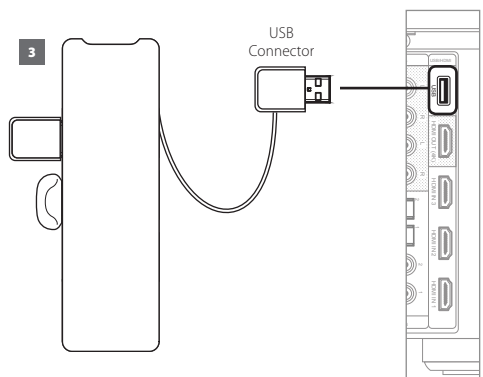
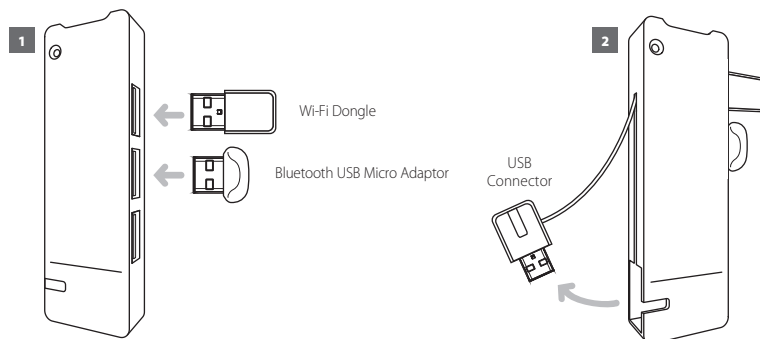


BluOS Kit Installation Guide

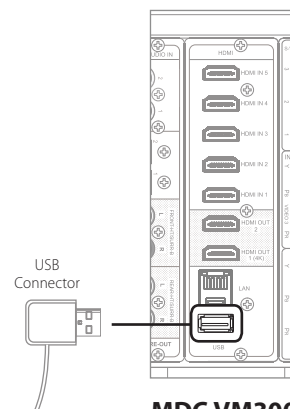
IMPORTANT! Follow these installation steps to add BluOS capability to your T758, T187, T777, T787, M15HD and M17 installed with compatible MDC VM130 or MDC VM300.

NOTES

- The Wi-Fi dongle and Bluetooth USB Micro Adaptor can be connected to any of the 4 ports of the USB hub.
- Refer to the owner's manual of the corresponding product for guidelines about network configuration and BluOS operation.



MDC VM130
(When installed with T758)



MDC VM300
(When installed with T187, T777, T787, M15HD and M17)