

SAMSUNG

Simple User Guide

Figures and illustrations in this Simple User Guide are provided for reference only and may differ from actual product appearance



AH81-17461B-01

HW-QS730D

You can access the User guide on Samsung's on-line customer support center by scanning the QR code on the left.
To see the manual on your PC or mobile device, download the manual in document format from Samsung's website. (<http://www.samsung.com/support>)

© 2024 Samsung Electronics Co., Ltd. All rights reserved.

Contact **SAMSUNG WORLD WIDE**
If you have any questions or comments relating to Samsung products, please contact the SAMSUNG customer care Center.

HEADQUARTERS
Samsung Electronics Canada Inc. 2050 Derry Road West, Mississauga, Ontario L5N 0B9 Canada
TEL: 1-800-SAMSUNG (1-800-726-7864)
www.samsung.com/ca/support

Country/Region	Samsung Service Center	Web Site
CANADA	1-800-SAMSUNG(726-7864)	www.samsung.com/ca/support (English) www.samsung.com/ca_fr/support (French)
U.S.A	1-800-SAMSUNG (726-7864)	www.samsung.com/us/support

SAFETY INFORMATION

SAFETY WARNINGS

TO REDUCE THE RISK OF ELECTRIC SHOCK, DO NOT REMOVE THE COVER (OR BACK). NO USER-SERVICEABLE PARTS ARE INSIDE. REFER SERVICING TO QUALIFIED SERVICE PERSONNEL.
Refer to the table below for an explanation of symbols which may be on your Samsung product.

CAUTION	RISK OF ELECTRIC SHOCK. DO NOT OPEN.
	This symbol indicates that high voltage is present inside. It is dangerous to make any kind of contact with any internal part of this product.
	This symbol indicates that this product has included important literature concerning operation and maintenance.
	Class II product : This symbol indicates that a safety connection to electrical earth (ground) is not required. If this symbol is not present on a product with a power cord, the product MUST have a reliable connection to protective earth (ground).

	AC voltage : Rated voltage marked with this symbol is AC voltage.
	DC voltage : Rated voltage marked with this symbol is DC voltage.
	Caution. Consult instructions for use : This symbol instructs the user to consult the user manual for further safety related information.

Using the SpaceFit Sound

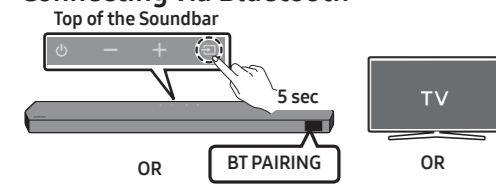
This function analyzes the user's listening space with the Samsung TV's microphone and provide optimal sound for the space. Sound optimization proceeds automatically.

NOTE

- Only certain TV models support this function, and the function is operated from the TV.

05 USING A WIRELESS CONNECTION

Connecting via Bluetooth



- Search for the Bluetooth device on your TV or mobile device.

What is the difference between BT READY and BT PAIRING?

- BT READY** : In this mode, you can reconnect any Samsung TV or mobile device that was connected before.
- BT PAIRING** : In this mode, you can connect a new device to the Soundbar.
(Press the **PAIR** button on the Soundbar remote control or press and hold the **(Source)** button on the top of the Soundbar for more than 5 seconds while the Soundbar is in "BT" mode.)

NOTE

- If asked for a PIN code when connecting a Bluetooth device, enter **0000**.

Connecting via Wi-Fi (Wireless Network)

- To connect a Soundbar to a mobile device via a wireless network (Wi-Fi), the **SmartThings** app is required.
- Connect your mobile device (smartphone, tablet, etc.) to the Wi-Fi network the TV is connected to.
 - Install and launch the **SmartThings** app on your mobile device (smartphone, tablet, etc.).
 - Follow the instructions in the app screen on the mobile device to connect the Soundbar to your Wi-Fi network.

WARNING

- To reduce the risk of fire or electric shock, do not expose this appliance to rain or moisture.
- To prevent injury, this apparatus must be securely attached to the floor/wall in accordance with the installation instructions.
- Do not use liquid fumigators containing chemicals, such as mosquito repellent or air freshener, around the product. If steam comes in contact with the product surface or enters the product, it may cause stains or malfunction.

CAUTION

- Do not expose this apparatus to dripping or splashing. Do not put objects filled with liquids, such as vases, on the apparatus.
- To turn this apparatus off completely, you must pull the power plug out of the wall socket. Consequently, the power plug must be easily and readily accessible at all times.

CAUTION (for Canada)

This device contains licence-exempt transmitter(s)/ receiver(s) that comply with Innovation, Science and Economic Development Canada's licence-exempt RSS(s). Operation is subject to the following two conditions:
(1) This device may not cause interference.
(2) This device must accept any interference, including interference that may cause undesired operation of the device.
This device and its antenna(s) must not be co-located or operation in conjunction with any other antenna or transmitter.
This device may automatically discontinue transmission if there is no information to transmit, or an operational failure. Note that this is not intended to prohibit the transmission of control or signaling information or the use of repetitive codes where required by the technology.
This Class B digital apparatus complies with Canadian ICES-003.
Radiation Exposure Statement
This equipment complies with IC RSS-102 radiation exposure limits set forth for an uncontrolled environment. This equipment should be installed and operated with minimum distance 20 cm between the radiator & your body.

Important Safety Instructions

Read these operating instructions carefully before using the unit. Follow all the safety instructions listed below. Keep these operating instructions handy for future reference.

- Read these instructions.
- Keep these Instructions.
- Heed all warnings.
- Follow all instructions.
- Do not use this apparatus near water.
- Clean only with dry cloth.
- Do not block any ventilation openings. Install in accordance with the manufacturer's instructions.
- Do not install near any heat sources such as radiators, heat registers, stoves, or other apparatus (including amplifiers) that produce heat.
- Do not hinder in any way the safety purpose of the polarized or grounding-type plug.
A polarized plug has two blades with one wider than the other. A grounding type plug has two blades and a third grounding prong. The wide blade or the third prong are provided for your safety. If the provided plug does not fit into your outlet, consult an electrician for replacement of the obsolete outlet.
- Protect the power cord from being walked on or pinched particularly at plugs, convenience receptacles, and the point where they exit from the apparatus.
- Only use attachments/accessories specified by the manufacturer.
- Use only with the cart, stand, tripod, bracket, or table specified by the manufacturer, or sold with the apparatus. When a cart is used, use caution when moving the cart/apparatus combination to avoid injury from tip-over.
- Unplug this apparatus during lightning storms or when unused for long periods of time.
- Refer all servicing to qualified service personnel. Servicing is required when the apparatus has been damaged in any way, such as power-supply cord or plug is damaged, liquid has been spilled or objects have fallen into the apparatus, the apparatus has been exposed to rain or moisture, does not operate normally, or has been dropped.

PRECAUTIONS

- Ensure that the AC power supply in your house complies with the power requirements listed on the identification sticker located on the bottom of your product. Install your product horizontally, on a suitable base (furniture), with enough space around it for ventilation (3-4 inches). Make sure the ventilation slots are not covered. Do not place the unit on amplifiers or other equipment which may become hot. This unit is designed for continuous use.
To fully turn off the unit, disconnect the AC plug from the wall outlet. Unplug the unit if you intend to leave it unused for a long period of time.
- During thunderstorms, disconnect the AC plug from the wall outlet. Voltage peaks due to lightning could damage the unit.
- Do not expose the unit to direct sunlight or other heat sources. This could lead to overheating and cause the unit to malfunction.
- Protect the product from moisture (i.e. vases), and excess heat (e.g. a fireplace) or equipment creating strong magnetic or electric fields. Unplug the power cable from the AC wall socket if the unit malfunctions. Your product is not intended for industrial use. It is for personal use only. Condensation may occur if your product has been stored in cold temperatures. If transporting the unit during the winter, wait approximately 2 hours until the unit has reached room temperature before using.
- The battery used with this product contains chemicals that are harmful to the environment. Do not dispose of the battery in the general household trash. Do not expose the battery to excess heat, direct sunlight, or fire. Do not short circuit, disassemble, or overheat the battery. CAUTION : Danger of explosion if the battery is replaced incorrectly. Replace only with the same or equivalent type.

01 CHECKING THE COMPONENTS

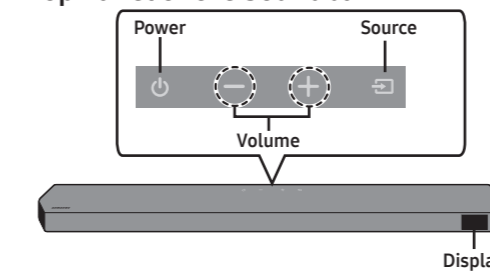
- Soundbar Main Unit
- Soundbar Remote Control
- Batteries
- Subwoofer
- Power Cord X 2 (Subwoofer, Soundbar)
- HDMI Cable
- Wall Mount Guide
- Holder-Screw X 2
- Screw (M4 x L10) X 2
- Bracket-Wall Mount X 2
- Rubber-Foot X 4

NOTE

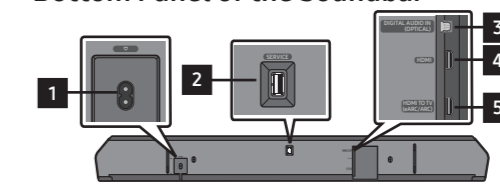
- To purchase additional components or optional cables, contact a Samsung Service Center or Samsung Customer Care.

02 PRODUCT OVERVIEW

Top Panel of the Soundbar



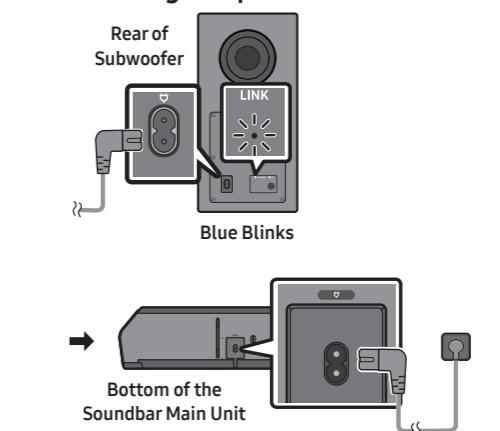
Bottom Panel of the Soundbar



- POWER**
Connect the Soundbar's AC power cable.
- SERVICE**
Connect a USB storage device to upgrade the product's software.
- DIGITAL AUDIO IN (OPTICAL)**
Connect to the digital (optical) output of an external device.
- HDMI**
Inputs digital video and audio signals simultaneously using an HDMI cable. Connect to the HDMI output of an external device.
- HDMI TO TV (eARC/ARC)**
Connect to the HDMI jack on a TV.

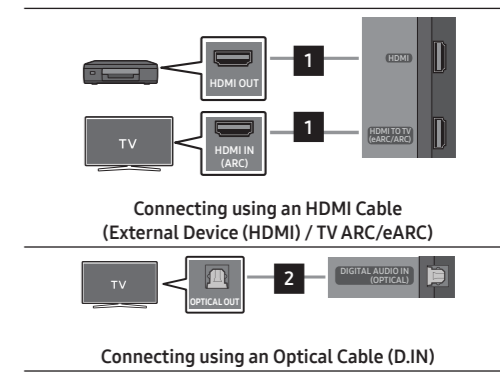
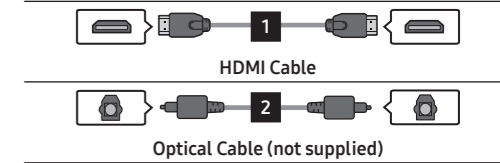
03 CONNECTING THE SOUNDBAR

Connecting the power and units



- The LINK LED indicator stops blinking and glows a solid blue when a connection is established between the Soundbar and the Subwoofer.

04 USING A WIRED CONNECTION



Connecting using an Optical Cable (D.IN)

- NOTE**
 - When the TV sound is not output, press the **(Source)** button at the top of the Soundbar or the **(Source)** button on the remote control to select the "TV ARC" mode.
 - The recommended cable is an HDMI cable certified by HDMI.org.
 - When you use an optical cable and the terminals have covers, be sure to remove the covers.

Using the Q-Symphony Function

When the Soundbar connects to a Samsung TV that supports the Q-Symphony function, you can play the sound simultaneously through the Soundbar and the TV. If you use the Q-Symphony function, the surround sound played on the TV allows you to enjoy a richer, more three-dimensional surround sound effect.
When the Soundbar is connected, "Q-symphony" menu appears on the TV. (The message displayed may differ with the TV model.)
(Settings (⚙️) → All Settings (⚙️) → Sound → Sound Output)

If the TV is not connected via HDMI TO TV (eARC/ARC)

- Check whether the HDMI cable is correctly connected to the ARC terminal.
- Connection may not be possible due to the connected external device (set-top box, game console, etc.). Directly connect the Soundbar.
- HDMI-CEC may not be activated on the TV. Turn on the CEC on the TV menu. (Samsung TV: Home (🏠) → Menu → Settings (⚙️) → All Settings (⚙️) → Connection → External Device Manager → Anynet+ (HDMI-CEC) ON)

Soundbar will not connect via Bluetooth.

- When connecting a new device, switch to "BT PAIRING" for connection. (Press the **PAIR** button on the remote control or press the **(Source)** button on the body for at least 5 seconds.)
- Reconnect it after removing the Bluetooth speaker list on the device to connect. (Samsung TV: Home (🏠) → Menu → Settings (⚙️) → All Settings (⚙️) → Sound → Sound Output → Bluetooth Speaker List)

Sound drops out when connected via Bluetooth.

- Some devices can cause radio interference if they are located too close to the Soundbar. e. g. microwaves, wireless routers, etc.
- If your device that is connected via Bluetooth moves too far away from the soundbar, it may cause the sound to drop out. Move the device closer to the soundbar.
- If a part of your body is in contact with the Bluetooth transmitter or the product is installed on metal furniture, the sound may drop out. Check the installation environment and conditions for use.

Soundbar will not connect to Wi-Fi.

- Make sure the wireless router is turned on and then reconnect the wireless router after rebooting.
 - The soundbar will not connect if the wireless signal is too weak. Try moving the router closer to the soundbar, or eliminating any obstacles that are between the soundbar and the router, if possible.
- The soundbar does not turn on automatically with the TV.**
- When you turn off the Soundbar while watching TV, power synchronization with the TV is disabled. First turn off the TV.

07 IMPORTANT NOTES ABOUT SERVICE

Figures and illustrations in this User Manual are provided for reference only and may differ from actual product appearance.

08 SPECIFICATIONS AND GUIDE

Model Name HW-QS730D	Dimensions (W x H x D) 43.7 x 2.38 x 4.7 inches (1110.7 x 60.4 x 120.0 mm)
Weight 10.6 lbs (4.8 kg)	Operating Humidity Range 10 % to 80 %, non-condensing
Operating Temperature Range +50 °F to +104 °F (+10 °C to +40 °C)	Storage Humidity 5 % to 95 %, non-condensing
Storage Temperature -4 °F to +113 °F (-20 °C to +45 °C)	Storage Humidity 5 % to 95 %, non-condensing
AMPLIFIER Rated Output power 160 W	
Supported play formats Dolby 5.1ch / Dolby Digital Plus / Dolby TRUE HD / Dolby ATMOS / DTS 5.1ch / DTS HD / DTS-HD Master Audio / DTS:X / LPCM 8Ch	
Subwoofer Name PS-WQ930D	
Weight 21.6 lbs (9.8 kg)	Dimensions (W x H x D) 8.3 x 15.9 x 15.9 inches (210.0 x 403.0 x 403.0 mm)
AMPLIFIER Rated Output power 160 W	

NOTE

- Samsung Electronics Co., Ltd reserves the right to change the specifications without notice.
- Weight and dimensions are approximate.
- The surround speakers are provided for specific models only.
- For more information about the power supply and power consumption, refer to the label attached to the product. (Label: Rear of the Soundbar Main Unit)

Precaution : The Soundbar will restart automatically if you turn on/turn off Wi-Fi.

Wi-Fi Port deactivation method
Press the **CH LEVEL** button on the remote control of the Soundbar for 30 seconds to turn Wi-Fi On / Off.

Bluetooth Port deactivation method
Press the **TONE CONTROL** button on the remote control of the Soundbar for 30 seconds to turn Bluetooth On / Off.

SAMSUNG

LIMITED WARRANTY TO ORIGINAL PURCHASER

Samsung Electronics Canada Inc.(SECA), warrants that this product is free from defective material and workmanship.
SECA further warrants that if this product fails to operate properly within the specified warranty period and the failure is due to improper workmanship or defective materials, SECA will repair or replace the product at its option.
All warranty repairs must be performed by a SECA Authorized Service Center. (The name and address of the location nearest you can be obtained by calling toll free: 1- 800- SAMSUNG)

LABOR	PARTS
One year (Carry-in)	One year

On carry-in models, transportation to and from the service center is the customer's responsibility. The original dated sales receipt must be retained by the customer and is the only acceptable proof of purchase. It must be presented to the authorized service center at the time service is requested.

EXCLUSIONS (WHAT IS NOT COVERED)

This warranty does not cover damage due to accident, fire, flood and/ or other acts of God; misuse, incorrect line voltage, improper installation, improper or unauthorized repairs, commercial use or damage that occurs in shipping. Exterior and interior finish, lamps, glass are not covered under this warranty. Customer adjustments which are explained in the instruction manual are not covered under the terms of this warranty. This warranty will automatically be voided for any unit found with a missing or altered serial number. This warranty is valid only on products purchased and used in Canada.

Samsung Electronics Canada Inc.
2050 Derry Rd West
Mississauga, On. L5N 0B9
Tel: 1-800-SAMSUNG (726-7864)
Fax: (905) 542-1199
Website: www.samsung.com/ca

